

Product Datasheet

ATP2C1 Antibody (2G1) - Azide and BSA Free H00027032-M01

Unit Size: 0.1 mg

Aliquot and store at -20C or -80C. Avoid freeze-thaw cycles.

www.novusbio.com



technical@novusbio.com

Publications: 6

Protocols, Publications, Related Products, Reviews, Research Tools and Images at:
www.novusbio.com/H00027032-M01

Updated 9/9/2025 v.20.1

Earn rewards for product
reviews and publications.

Submit a publication at www.novusbio.com/publications

Submit a review at www.novusbio.com/reviews/destination/H00027032-M01



H00027032-M01

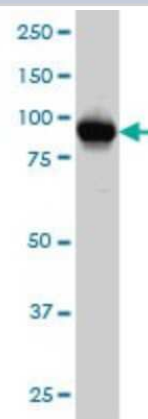
ATP2C1 Antibody (2G1) - Azide and BSA Free

Product Information	
Unit Size	0.1 mg
Concentration	Concentrations vary lot to lot. See vial label for concentration. If unlisted please contact technical services.
Storage	Aliquot and store at -20C or -80C. Avoid freeze-thaw cycles.
Clonality	Monoclonal
Clone	2G1
Preservative	No Preservative
Isotype	IgG1 Lambda
Purity	IgG purified
Buffer	In 1x PBS, pH 7.4
Product Description	
Description	Novus Biologicals Mouse ATP2C1 Antibody (2G1) - Azide and BSA Free (H00027032-M01) is a monoclonal antibody validated for use in WB, ELISA, ICC/IF and IP. Anti-ATP2C1 Antibody: Cited in 6 publications. All Novus Biologicals antibodies are covered by our 100% guarantee.
Host	Mouse
Gene ID	27032
Gene Symbol	ATP2C1
Species	Human
Specificity/Sensitivity	ATP2C1 - ATPase, Ca++ transporting, type 2C, member 1
Immunogen	ATP2C1 (AAH28139, 119 a.a. ~ 269 a.a) partial recombinant protein with GST tag. MW of the GST tag alone is 26 KDa. VQEYRSEKSLEELSKLVPPECHCVREGKLEHTLARDLVPGDTVCLSVGDRVPA DLRLFEAVDLSIDESSLTGETTPCSKVTAQPAATNGDLASRSNIAFMGTLVRC GKAKGVVIGTGENSEFGEVFKMMQAEAEAPKTPLQKSMDLLGKQL
Notes	This product is produced by and distributed for Abnova, a company based in Taiwan.
Product Application Details	
Applications	Western Blot, ELISA, Immunocytochemistry/ Immunofluorescence, Immunoprecipitation, Knockdown Validated
Recommended Dilutions	Western Blot 1:500, ELISA, Immunocytochemistry/ Immunofluorescence, Immunoprecipitation, Knockdown Validated
Application Notes	Antibody reactive against cell lysate and recombinant protein for Western Blot. Has also been used for immunofluorescence, RNAi validation and ELISA.

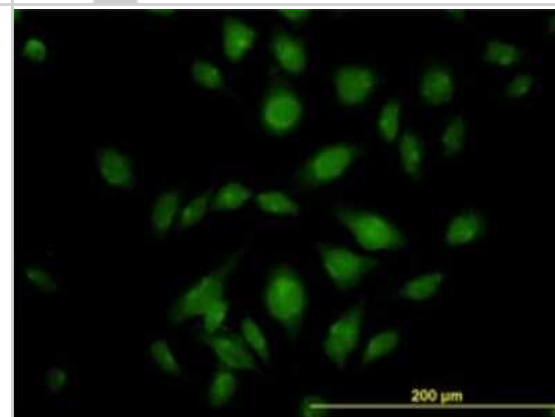


Images

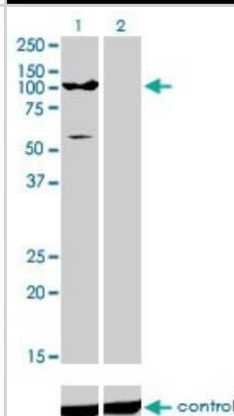
Western Blot: ATP2C1 Antibody (2G1) [H00027032-M01] - ATP2C1 monoclonal antibody (M01), clone 2G1 Analysis of ATP2C1 expression in HeLa.



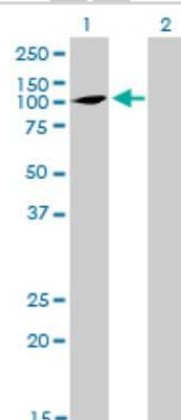
Immunocytochemistry/Immunofluorescence: ATP2C1 Antibody (2G1) [H00027032-M01] - Analysis of monoclonal antibody to ATP2C1 on HeLa cell. Antibody concentration 10 ug/ml.



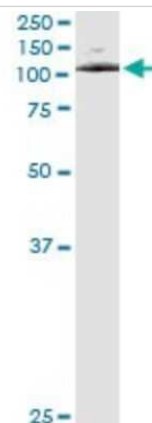
Western Blot: ATP2C1 Antibody (2G1) [H00027032-M01] - Analysis of ATP2C1 over-expressed 293 cell line, cotransfected with ATP2C1 Validated Chimera RNAi (Cat # H00027032-R01V) (Lane 2) or non-transfected control (Lane 1). Blot probed with ATP2C1 monoclonal antibody (M01), clone 2G1 (Cat # H00027032-M01). GAPDH (36.1 kDa) used as specificity and loading control.



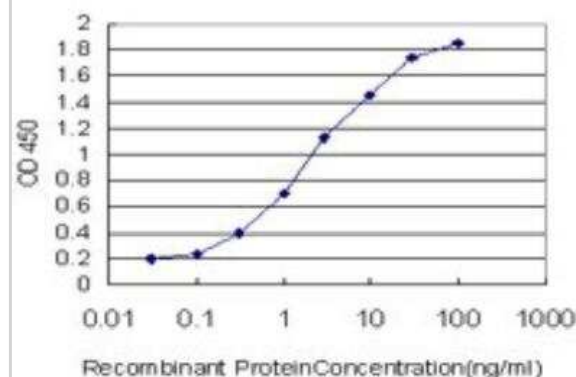
Western Blot: ATP2C1 Antibody (2G1) [H00027032-M01] - Analysis of ATP2C1 expression in transfected 293T cell line by ATP2C1 monoclonal antibody (M01), clone 2G1. Lane 1: ATP2C1 transfected lysate(100.6 KDa). Lane 2: Non-transfected lysate.



Immunoprecipitation: ATP2C1 Antibody (2G1) [H00027032-M01] - Analysis of ATP2C1 transfected lysate using anti-ATP2C1 monoclonal antibody and Protein A Magnetic Bead, and immunoblotted with ATP2C1 MaxPab rabbit polyclonal antibody.



ELISA: ATP2C1 Antibody (2G1) [H00027032-M01] - Detection limit for recombinant GST tagged ATP2C1 is approximately 0.03ng/ml as a capture antibody.



Publications

Victoria M, Garrett B, Tyne T et al. The Golgi calcium ATPase pump plays an essential role in AAV trafficking and transduction. J Virol. 2020-08-19 [PMID: 32817219]

Steimle BL, Bailey DK, Smith FM Et al. Calcium and the Ca-ATPase SPCA1 modulate plasma membrane abundance of ZIP8 and ZIP14 to regulate Mn(II) uptake in brain microvascular endothelial cells J Biol Chem 2022-07-05 [PMID: 35787370] (ICC/IF, WB, Human)

Details:

Citation using the Alexa Fluor 647 version of this antibody.

Hoffmann HH, Schneider WM, Blomen VA et al. Diverse Viruses Require the Calcium Transporter SPCA1 for Maturation and Spread. Cell Host Microbe 2017-10-11 [PMID: 29024641]

Deng Y, Pakdel M, Blank B et al. Activity of the SPCA1 Calcium Pump Couples Sphingomyelin Synthesis to Sorting of Secretory Proteins in the Trans-Golgi Network. Dev Cell 2018-11-01 [PMID: 30393074]

Kienzle C, Basnet N, Crevenna AH et al. Cofilin recruits F-actin to SPCA1 and promotes Ca²⁺-mediated secretory cargo sorting. J Cell Biol. 2014-09-01 [PMID: 25179631] (Human)

Grice DM, Vetter I, Faddy HM. Golgi calcium pump secretory pathway calcium ATPase 1 (SPCA1) is a key regulator of insulin-like growth factor receptor (IGF1R) processing in the basal-like breast cancer cell line MDA-MB-231. J Biol Chem 285(48):37458-66. 2010-11-26 [PMID: 20837466]



Novus Biologicals USA

10730 E. Briarwood Avenue
Centennial, CO 80112
USA
Phone: 303.730.1950
Toll Free: 1.888.506.6887
Fax: 303.730.1966
nb-customerservice@bio-techne.com

Bio-Techne Canada

21 Canmotor Ave
Toronto, ON M8Z 4E6
Canada
Phone: 905.827.6400
Toll Free: 855.668.8722
Fax: 905.827.6402
canada.inquires@bio-techne.com

Bio-Techne Ltd

19 Barton Lane
Abingdon Science Park
Abingdon, OX14 3NB, United Kingdom
Phone: (44) (0) 1235 529449
Free Phone: 0800 37 34 15
Fax: (44) (0) 1235 533420
info.EMEA@bio-techne.com

General Contact Information

www.novusbio.com
Technical Support: nb-technical@bio-techne.com
Orders: nb-customerservice@bio-techne.com
General: novus@novusbio.com

Products Related to H00027032-M01

HAF007	Goat anti-Mouse IgG Secondary Antibody [HRP]
NB720-B	Rabbit anti-Mouse IgG (H+L) Secondary Antibody [Biotin]
NBP1-96982	Mouse IgG1 Lambda Isotype Control (MG1L)
NBP1-88887PEP	ATP2C1 Recombinant Protein Antigen

Limitations

This product is for research use only and is not approved for use in humans or in clinical diagnosis. Primary Antibodies are guaranteed for 1 year from date of receipt.

For more information on our 100% guarantee, please visit www.novusbio.com/guarantee

Earn gift cards/discounts by submitting a review: www.novusbio.com/reviews/submit/H00027032-M01

Earn gift cards/discounts by submitting a publication using this product:
www.novusbio.com/publications

