

# Product Datasheet

## alpha-Methylacyl-CoA Racemase/AMACR Antibody (1D8) H00023600-M02

Unit Size: 0.1 mg

Aliquot and store at -20C or -80C. Avoid freeze-thaw cycles.

[www.novusbio.com](http://www.novusbio.com)



[technical@novusbio.com](mailto:technical@novusbio.com)

Protocols, Publications, Related Products, Reviews, Research Tools and Images at:  
[www.novusbio.com/H00023600-M02](http://www.novusbio.com/H00023600-M02)

Updated 7/16/2023 v.20.1

Earn rewards for product  
reviews and publications.

Submit a publication at [www.novusbio.com/publications](http://www.novusbio.com/publications)

Submit a review at [www.novusbio.com/reviews/destination/H00023600-M02](http://www.novusbio.com/reviews/destination/H00023600-M02)



**H00023600-M02**

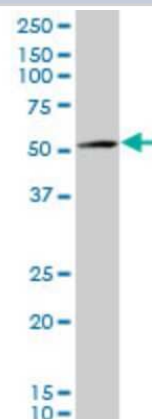
alpha-Methylacyl-CoA Racemase/AMACR Antibody (1D8)

Product Information	
Unit Size	0.1 mg
Concentration	Concentrations vary lot to lot. See vial label for concentration. If unlisted please contact technical services.
Storage	Aliquot and store at -20C or -80C. Avoid freeze-thaw cycles.
Clonality	Monoclonal
Clone	1D8
Preservative	No Preservative
Isotype	IgG2b Kappa
Purity	IgG purified
Buffer	In 1x PBS, pH 7.4
Product Description	
Host	Mouse
Gene ID	23600
Gene Symbol	AMACR
Species	Human
Specificity/Sensitivity	AMACR - alpha-methylacyl-CoA racemase (1D8)
Immunogen	AMACR (AAH09471, 1 a.a. ~ 198 a.a) full-length recombinant protein with GST tag. MW of the GST tag alone is 26 KDa. MALQGISVMELSGLAPGPFAMVLADFGARVVRVDRPGSRYDVSRLGRGKRS LVLDLKQPRGA AVLRLCKRSDVLEPFRRGVMEKLQLGPEILQRENPRLIYAR LSGFGQSGSFCRLAGHDINYLALSGGRNSMFKFFSVENSEIESVGSTSRTEHV GWWSTFLYDLQDSRWGIHGCWSNRTPVLRAADQRTWTKV
Notes	This product is produced by and distributed for Abnova, a company based in Taiwan.
Product Application Details	
Applications	Western Blot, ELISA, Sandwich ELISA
Recommended Dilutions	Western Blot 1:500, ELISA, Sandwich ELISA
Application Notes	Antibody reactive against cell lysate for western blot. It has also been used for ELISA.

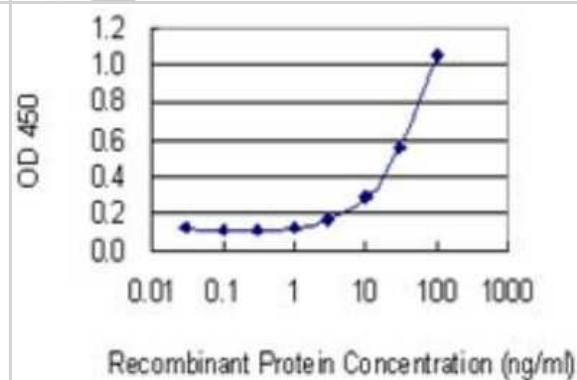


## Images

Western Blot: alpha-Methylacyl-CoA Racemase/AMACR Antibody (1D8) [H00023600-M02] - AMACR monoclonal antibody (M02), clone 1D8.  
Analysis of AMACR expression in HepG2.



Sandwich ELISA: alpha-Methylacyl-CoA Racemase/AMACR Antibody (1D8) [H00023600-M02] - Detection limit for recombinant GST tagged AMACR is 1 ng/ml as a capture antibody.





### **Novus Biologicals USA**

10730 E. Briarwood Avenue  
Centennial, CO 80112  
USA

Phone: 303.730.1950  
Toll Free: 1.888.506.6887  
Fax: 303.730.1966  
novus@novusbio.com

### **Bio-Techne Canada**

21 Canmotor Ave  
Toronto, ON M8Z 4E6  
Canada

Phone: 905.827.6400  
Toll Free: 855.668.8722  
Fax: 905.827.6402  
canada.inquires@bio-techne.com

### **Bio-Techne Ltd**

19 Barton Lane  
Abingdon Science Park  
Abingdon, OX14 3NB, United Kingdom  
Phone: (44) (0) 1235 529449  
Free Phone: 0800 37 34 15  
Fax: (44) (0) 1235 533420  
info.EMEA@bio-techne.com

### **General Contact Information**

www.novusbio.com  
Technical Support: technical@novusbio.com  
Orders: orders@novusbio.com  
General: novus@novusbio.com

### **Limitations**

This product is for research use only and is not approved for use in humans or in clinical diagnosis. Primary Antibodies are guaranteed for 1 year from date of receipt.

For more information on our 100% guarantee, please visit [www.novusbio.com/guarantee](http://www.novusbio.com/guarantee)

Earn gift cards/discounts by submitting a review: [www.novusbio.com/reviews/submit/H00023600-M02](http://www.novusbio.com/reviews/submit/H00023600-M02)

Earn gift cards/discounts by submitting a publication using this product:  
[www.novusbio.com/publications](http://www.novusbio.com/publications)

