

Product Datasheet

CPSF6 Antibody (3F11) - Azide and BSA Free H00011052-M10

Unit Size: 0.1 mg

Aliquot and store at -20C or -80C. Avoid freeze-thaw cycles.

www.novusbio.com



technical@novusbio.com

Publications: 4

Protocols, Publications, Related Products, Reviews, Research Tools and Images at:
www.novusbio.com/H00011052-M10

Updated 2/21/2025 v.20.1

Earn rewards for product
reviews and publications.

Submit a publication at www.novusbio.com/publications

Submit a review at www.novusbio.com/reviews/destination/H00011052-M10



H00011052-M10

CPSF6 Antibody (3F11) - Azide and BSA Free

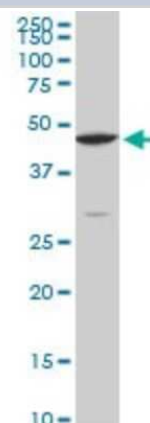
Product Information	
Unit Size	0.1 mg
Concentration	Concentrations vary lot to lot. See vial label for concentration. If unlisted please contact technical services.
Storage	Aliquot and store at -20C or -80C. Avoid freeze-thaw cycles.
Clonality	Monoclonal
Clone	3F11
Preservative	No Preservative
Isotype	IgG2a Kappa
Purity	IgG purified
Buffer	In 1x PBS, pH 7.4

Product Description	
Host	Mouse
Gene ID	11052
Gene Symbol	CPSF6
Species	Human, Mouse
Specificity/Sensitivity	CPSF6 (3F11)
Immunogen	CPSF6 (NP_008938, 37 a.a. ~ 136 a.a) partial recombinant protein with GST tag. MW of the GST tag alone is 26 KDa. ISPSANNGDAPEDRDYMDTLPPTVGDDVGKGAAPNVVYTYTGKRIALYIGNLT WWTDEDLLEAVHSLGVNDILEIKFFENRANGQSKGFALVGVGSEAS
Notes	This product is produced by and distributed for Abnova, a company based in Taiwan.

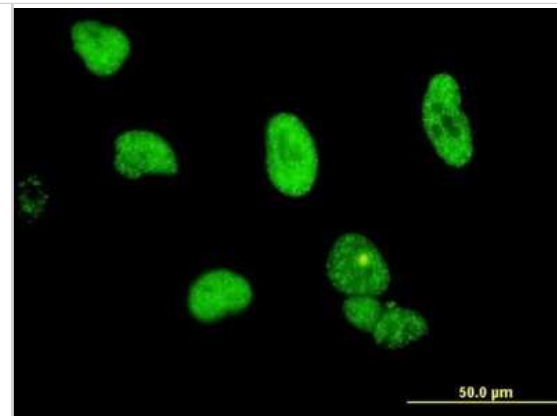
Product Application Details	
Applications	Western Blot, ELISA, Immunocytochemistry/ Immunofluorescence
Recommended Dilutions	Western Blot 1:500, ELISA 1:100-1:2000, Immunocytochemistry/ Immunofluorescence 1:10-1:2000
Application Notes	Antibody reactive against cell lysate, transfected lysate and recombinant protein for Western Blot. Has also been used for immunofluorescence and ELISA.

Images

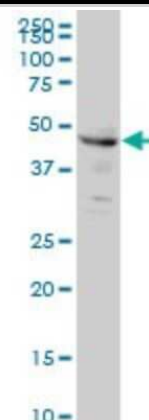
Western Blot: CPSF6 Antibody (3F11) [H00011052-M10] - Analysis of CPSF6 expression in Raw 264.7 (Cat # L024V1).



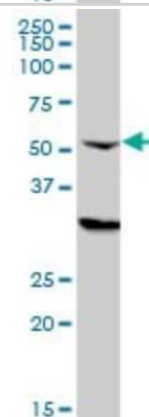
Immunocytochemistry/Immunofluorescence: CPSF6 Antibody (3F11) [H00011052-M10] - Analysis of monoclonal antibody to CPSF6 on HeLa cell. Antibody concentration 10 ug/ml



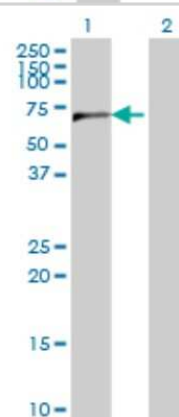
Western Blot: CPSF6 Antibody (3F11) [H00011052-M10] - Analysis of CPSF6 expression in HeLa (Cat # L013V1).



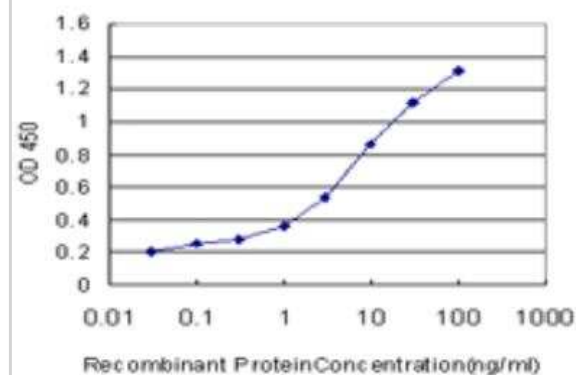
Western Blot: CPSF6 Antibody (3F11) [H00011052-M10] - Analysis of CPSF6 expression in HL-60 (Cat # L014V1).



Western Blot: CPSF6 Antibody (3F11) [H00011052-M10] - Analysis of CPSF6 expression in transfected 293T cell line by CPSF6 monoclonal antibody (M10), clone 3F11. Lane 1: CPSF6 transfected lysate (59.21 kDa). Lane 2: Non-transfected lysate.



ELISA: CPSF6 Antibody (3F11) [H00011052-M10] - Detection limit for recombinant GST tagged CPSF6 is approximately 0.03ng/ml as a capture antibody.



Publications

Selyutina A, Persaud M, Lee K et al. Nuclear Import of the HIV-1 Core Precedes Reverse Transcription and Uncoating Cell Reports 2020-09-29 [PMID: 32997983]

Selyutina A, Hu P, Miller S et al. GS-CA1 and lenacapavir stabilize the HIV-1 core and modulate the core interaction with cellular factors iScience 2022-01-01 [PMID: 35005542] (ICC/IF, WB, Human)

Kim S, Yamamoto J, Chen Y et al. Evidence that cleavage factor Im is a heterotetrameric protein complex controlling alternative polyadenylation. Genes Cells. 2010-07-29 [PMID: 20695905]

Larriba MJ, Casado-Vela J, Pendas-Franco N et al. Novel snail1 target proteins in human colon cancer identified by proteomic analysis. PLoS One. 2010-04-20 [PMID: 20421926]



Novus Biologicals USA

10730 E. Briarwood Avenue
Centennial, CO 80112
USA
Phone: 303.730.1950
Toll Free: 1.888.506.6887
Fax: 303.730.1966
nb-customerservice@bio-techne.com

Bio-Techne Canada

21 Canmotor Ave
Toronto, ON M8Z 4E6
Canada
Phone: 905.827.6400
Toll Free: 855.668.8722
Fax: 905.827.6402
canada.inquires@bio-techne.com

Bio-Techne Ltd

19 Barton Lane
Abingdon Science Park
Abingdon, OX14 3NB, United Kingdom
Phone: (44) (0) 1235 529449
Free Phone: 0800 37 34 15
Fax: (44) (0) 1235 533420
info.EMEA@bio-techne.com

General Contact Information

www.novusbio.com
Technical Support: nb-technical@bio-techne.com
Orders: nb-customerservice@bio-techne.com
General: novus@novusbio.com

Products Related to H00011052-M10

HAF007	Goat anti-Mouse IgG Secondary Antibody [HRP]
NB720-B	Rabbit anti-Mouse IgG (H+L) Secondary Antibody [Biotin]
NBP1-96981-0.5mg	Mouse IgG2a Kappa Isotype Control (M2AK)
H00011052-P01-10ug	Recombinant Human CPSF6 GST (N-Term) Protein

Limitations

This product is for research use only and is not approved for use in humans or in clinical diagnosis. Primary Antibodies are guaranteed for 1 year from date of receipt.

For more information on our 100% guarantee, please visit www.novusbio.com/guarantee

Earn gift cards/discounts by submitting a review: www.novusbio.com/reviews/submit/H00011052-M10

Earn gift cards/discounts by submitting a publication using this product:
www.novusbio.com/publications

