

# Product Datasheet

## KIF2C Antibody (1G2) - Azide and BSA Free H00011004-M01

Unit Size: 0.1 mg

Aliquot and store at -20C or -80C. Avoid freeze-thaw cycles.

[www.novusbio.com](http://www.novusbio.com)



[technical@novusbio.com](mailto:technical@novusbio.com)

### Publications: 4

Protocols, Publications, Related Products, Reviews, Research Tools and Images at:  
[www.novusbio.com/H00011004-M01](http://www.novusbio.com/H00011004-M01)

Updated 2/21/2025 v.20.1

Earn rewards for product  
reviews and publications.

Submit a publication at [www.novusbio.com/publications](http://www.novusbio.com/publications)

Submit a review at [www.novusbio.com/reviews/destination/H00011004-M01](http://www.novusbio.com/reviews/destination/H00011004-M01)



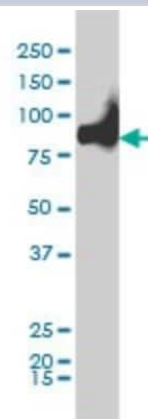
**H00011004-M01**

KIF2C Antibody (1G2) - Azide and BSA Free

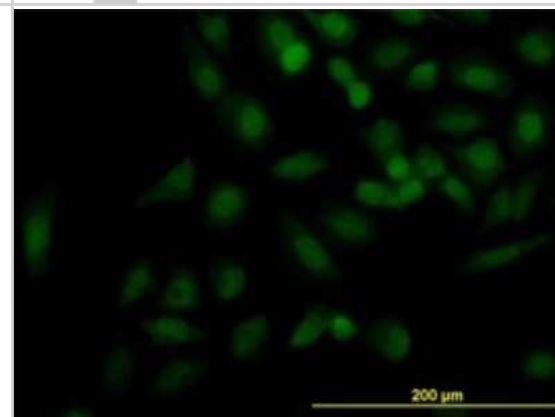
Product Information	
Unit Size	0.1 mg
Concentration	Concentrations vary lot to lot. See vial label for concentration. If unlisted please contact technical services.
Storage	Aliquot and store at -20C or -80C. Avoid freeze-thaw cycles.
Clonality	Monoclonal
Clone	1G2
Preservative	No Preservative
Isotype	IgG1 Kappa
Purity	IgG purified
Buffer	In 1x PBS, pH 7.4
Product Description	
Host	Mouse
Gene ID	11004
Gene Symbol	KIF2C
Species	Human
Reactivity Notes	Human. Other species not tested.
Specificity/Sensitivity	KIF2C - kinesin family member 2C
Immunogen	KIF2C (AAH14924, 1 a.a. ~ 100 a.a) partial recombinant protein with GST tag. MW of the GST tag alone is 26 KDa. MAMDSSLQARLFPGLAIKIQRSNGLIHSANVRTVNLEKSCVSVEWAEGGATKG KEIDFDDVAAINPELLQLLPLHPKDNLPLQENVTIQKQKRRSVNSKI
Notes	This product is produced by and distributed for Abnova, a company based in Taiwan.
Product Application Details	
Applications	Western Blot, ELISA, Immunocytochemistry/ Immunofluorescence, Immunohistochemistry, Immunohistochemistry-Paraffin, Immunoprecipitation, Sandwich ELISA, Knockdown Validated
Recommended Dilutions	Western Blot 1:500, ELISA, Immunohistochemistry, Immunocytochemistry/ Immunofluorescence, Immunoprecipitation, Immunohistochemistry-Paraffin, Sandwich ELISA, Knockdown Validated
Application Notes	Antibody reactive against recominant protein and cell lysate for Western Blot. Has also been used for immunofluoresence, immunohistochemistry (paraffin), RNAi validation and ELISA.

## Images

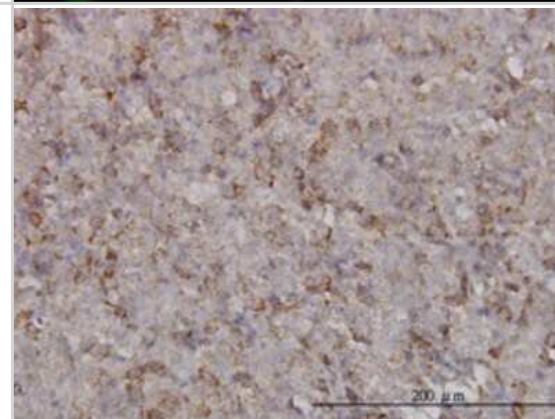
Western Blot: KIF2C Antibody (1G2) [H00011004-M01] - KIF2C monoclonal antibody (M01), clone 1G2 Analysis of KIF2C expression in Hela S3 NE.



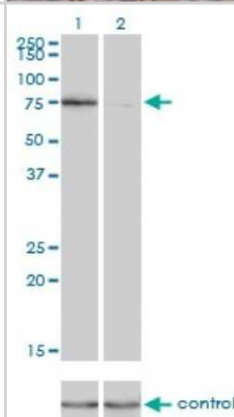
Immunocytochemistry/Immunofluorescence: KIF2C Antibody (1G2) [H00011004-M01] - Analysis of monoclonal antibody to KIF2C on HeLa cell. Antibody concentration 10 ug/ml.



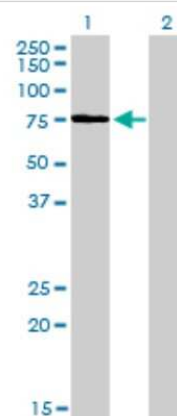
Immunohistochemistry-Paraffin: KIF2C Antibody (1G2) [H00011004-M01] - Analysis of monoclonal antibody to KIF2C on formalin-fixed paraffin-embedded human malignant lymphoma, diffuse large B. Antibody concentration 3 ug/ml.



Western Blot: KIF2C Antibody (1G2) [H00011004-M01] - Analysis of KIF2C over-expressed 293 cell line, cotransfected with KIF2C Validated Chimera RNAi ( Cat # H00011004-R01V ) (Lane 2) or non-transfected control (Lane 1). Blot probed with KIF2C monoclonal antibody (M01), clone 1G2 (Cat # H00011004-M01 ). GAPDH ( 36.1 kDa ) used as specificity and loading control.



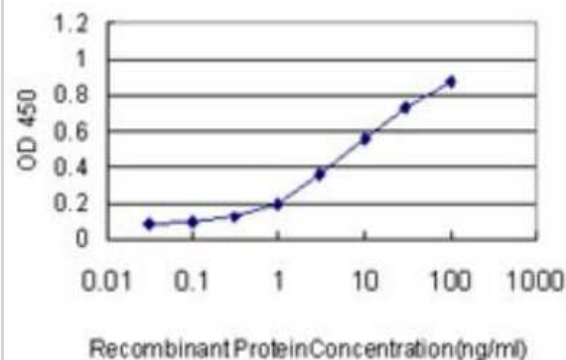
Western Blot: KIF2C Antibody (1G2) [H00011004-M01] - Analysis of KIF2C expression in transfected 293T cell line by KIF2C monoclonal antibody (M01), clone 1G2. Lane 1: KIF2C transfected lysate(81.3 KDa). Lane 2: Non-transfected lysate.



Immunoprecipitation: KIF2C Antibody (1G2) [H00011004-M01] - Analysis of KIF2C transfected lysate using anti-KIF2C monoclonal antibody and Protein A Magnetic Bead, and immunoblotted with KIF2C MaxPab rabbit polyclonal antibody.



Sandwich ELISA: KIF2C Antibody (1G2) [H00011004-M01] - Detection limit for recombinant GST tagged KIF2C is approximately 0.1ng/ml as a capture antibody.



## Publications

Liao S, Rajendraprasad G, Wang N et al. Molecular basis of vasohibins-mediated detyrosination and its impact on spindle function and mitosis. *Cell Res.* 2019-06-06 [PMID: 31171830]

Targa B, Klipfel L, Cantaloube I et al. Septin filament coalignment with microtubules depends on SEPT9\_i1 and tubulin polyglutamylation, and is an early feature of acquired cell resistance to paclitaxel. *Cell Death Dis.* 2019-01-22 [PMID: 30670682]

Lancaster OM, Le Berre M, Dimitracopoulos A et al. Mitotic Rounding Alters Cell Geometry to Ensure Efficient Bipolar Spindle Formation. *Dev Cell.* 2013-04-25 [PMID: 23623611]

Sanhaji M, Friel CT, Kreis NN et al. Functional and spatial regulation of mitotic centromere-associated kinesin by cyclin-dependent kinase 1. *Mol Cell Biol* 30(11):2594-607. 2010-06-01 [PMID: 20368358]



### **Novus Biologicals USA**

10730 E. Briarwood Avenue  
Centennial, CO 80112  
USA  
Phone: 303.730.1950  
Toll Free: 1.888.506.6887  
Fax: 303.730.1966  
nb-customerservice@bio-techne.com

### **Bio-Techne Canada**

21 Canmotor Ave  
Toronto, ON M8Z 4E6  
Canada  
Phone: 905.827.6400  
Toll Free: 855.668.8722  
Fax: 905.827.6402  
canada.inquires@bio-techne.com

### **Bio-Techne Ltd**

19 Barton Lane  
Abingdon Science Park  
Abingdon, OX14 3NB, United Kingdom  
Phone: (44) (0) 1235 529449  
Free Phone: 0800 37 34 15  
Fax: (44) (0) 1235 533420  
info.EMEA@bio-techne.com

### **General Contact Information**

[www.novusbio.com](http://www.novusbio.com)  
Technical Support: nb-technical@bio-techne.com  
Orders: nb-customerservice@bio-techne.com  
General: novus@novusbio.com

### **Products Related to H00011004-M01**

HAF007	Goat anti-Mouse IgG Secondary Antibody [HRP]
NB720-B	Rabbit anti-Mouse IgG (H+L) Secondary Antibody [Biotin]
NBP1-43319-0.5mg	Mouse IgG1 Kappa Isotype Control (P3.6.2.8.1)
H00011004-P01-10ug	Recombinant Human KIF2C GST (N-Term) Protein

### **Limitations**

This product is for research use only and is not approved for use in humans or in clinical diagnosis. Primary Antibodies are guaranteed for 1 year from date of receipt.

For more information on our 100% guarantee, please visit [www.novusbio.com/guarantee](http://www.novusbio.com/guarantee)

Earn gift cards/discounts by submitting a review: [www.novusbio.com/reviews/submit/H00011004-M01](http://www.novusbio.com/reviews/submit/H00011004-M01)

Earn gift cards/discounts by submitting a publication using this product:  
[www.novusbio.com/publications](http://www.novusbio.com/publications)

