

Product Datasheet

COLEC10 Antibody (4C1) - Azide and BSA Free H00010584-M01

Unit Size: 0.1 mg

Aliquot and store at -20C or -80C. Avoid freeze-thaw cycles.

www.novusbio.com



technical@novusbio.com

Publications: 1

Protocols, Publications, Related Products, Reviews, Research Tools and Images at:
www.novusbio.com/H00010584-M01

Updated 9/9/2025 v.20.1

Earn rewards for product
reviews and publications.

Submit a publication at www.novusbio.com/publications

Submit a review at www.novusbio.com/reviews/destination/H00010584-M01



H00010584-M01

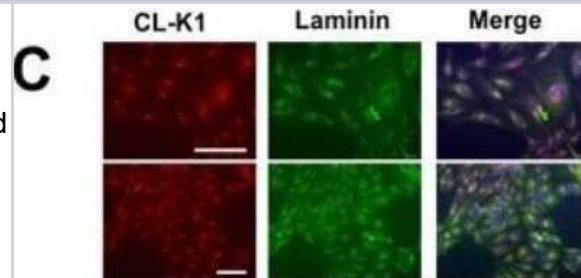
COLEC10 Antibody (4C1) - Azide and BSA Free

Product Information	
Unit Size	0.1 mg
Concentration	Concentrations vary lot to lot. See vial label for concentration. If unlisted please contact technical services.
Storage	Aliquot and store at -20C or -80C. Avoid freeze-thaw cycles.
Clonality	Monoclonal
Clone	4C1
Preservative	No Preservative
Isotype	IgG2a Kappa
Purity	IgG purified
Buffer	In 1x PBS, pH 7.4
Product Description	
Description	Novus Biologicals Mouse COLEC10 Antibody (4C1) - Azide and BSA Free (H00010584-M01) is a monoclonal antibody validated for use in IHC, ELISA and ICC/IF. Anti-COLEC10 Antibody: Cited in 1 publication. All Novus Biologicals antibodies are covered by our 100% guarantee.
Host	Mouse
Gene ID	10584
Gene Symbol	COLEC10
Species	Human, Mouse
Reactivity Notes	Use in Mouse reported in scientific literature (PMID:28301481).
Specificity/Sensitivity	COLEC10 - collectin sub-family member 10 (C-type lectin) (4C1)
Immunogen	COLEC10 (NP_006429.1, 121 a.a. ~ 229 a.a) partial recombinant protein with GST tag. MW of the GST tag alone is 26 KDa. CGRYRKFGVGLDISIARLKTSMKFVKNVIAGIRETEEFYFYIVQEEKNYRESLTH CRIRGGMLAMPKDEAANTLIADYVAKSGFFRVFIGVNDLEREGQYMFTDNTPL Q
Notes	This product is produced by and distributed for Abnova, a company based in Taiwan.
Product Application Details	
Applications	Immunohistochemistry-Paraffin, ELISA, Immunocytochemistry/ Immunofluorescence, Immunohistochemistry, Sandwich ELISA
Recommended Dilutions	ELISA, Immunohistochemistry, Immunocytochemistry/ Immunofluorescence, Immunohistochemistry-Paraffin, Sandwich ELISA
Application Notes	This product is useful for ELISA. Use in Immunocytochemistry/immunofluorescence reported in scientific literature (PMID 28301481).

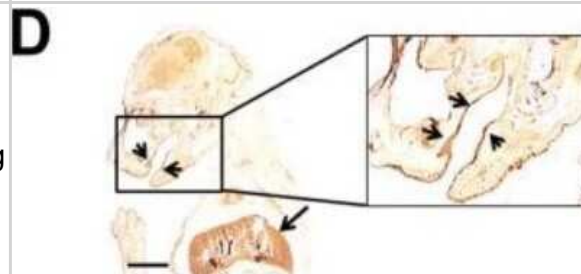


Images

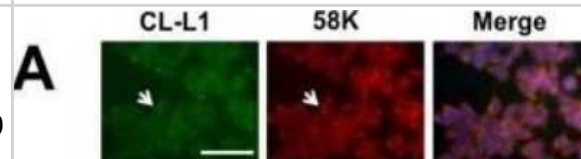
Immunocytochemistry/Immunofluorescence: COLEC10 Antibody (4C1) [H00010584-M01] - Cellular and embryonic localisation of CL-L1.A. Immunostaining of ATDC5 cells with the golgi marker 58K and CL-L1. CL-L1 shows localisation with golgi apparatus (white arrow). Laminin and CL-L1 coimmunolocalisation. Laminin shows partial cellular immunolocalisation with CL-L1 around the golgi area (arrows). Scale bar 50 um C. Laminin and CL-K1 coimmunolocalisation. CL-K1 staining shows a very strong golgi localisation with partial cytoplasmatic laminin colocalisation. Image collected and cropped by CiteAb from the following publication (<https://dx.plos.org/10.1371/journal.pgen.1006679>), licensed under a CC-BY license.



Immunohistochemistry-Paraffin: COLEC10 Antibody (4C1) [H00010584-M01] - Cellular and embryonic localisation of CL-L1. D. CL-L1. Immunohistochemistry of a 18.5 days postfertilization mouse embryo. CL-L1 is expressed in the liver (long arrow) and submucosal patal region (short arrows). Image collected and cropped by CiteAb from the following publication (<https://dx.plos.org/10.1371/journal.pgen.1006679>), licensed under a CC-BY license.



Immunocytochemistry/Immunofluorescence: COLEC10 Antibody (4C1) [H00010584-M01] - Cellular and embryonic localisation of CL-L1. Immunostaining of ATDC5 cells with the golgi marker 58K and CL-L1. CL-L1 shows localisation with golgi apparatus (white arrow).Scale bar 50 um. Image collected and cropped by CiteAb from the following publication (<https://dx.plos.org/10.1371/journal.pgen.1006679>), licensed under a CC-BY license.

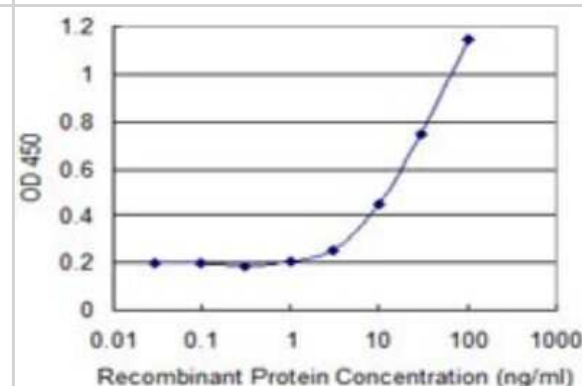
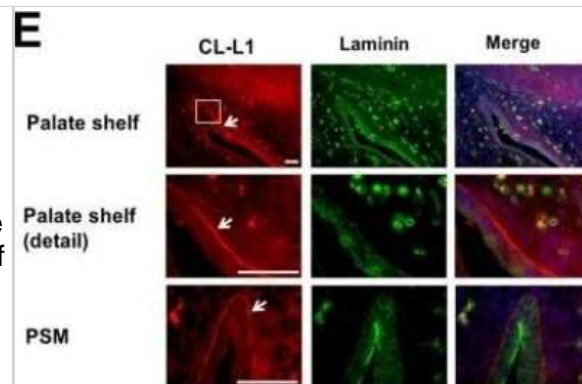


Immunocytochemistry/Immunofluorescence: COLEC10 Antibody (4C1) [H00010584-M01] - Cellular and embryonic localisation of CL-L1. Laminin and CL-L1 coimmunolocalisation. Laminin shows partial cellular immunolocalisation with CL-L1 around the golgi area (arrows). Scale bar 50 um. Image collected and cropped by CiteAb from the following publication (<https://dx.plos.org/10.1371/journal.pgen.1006679>), licensed under a CC-BY license.

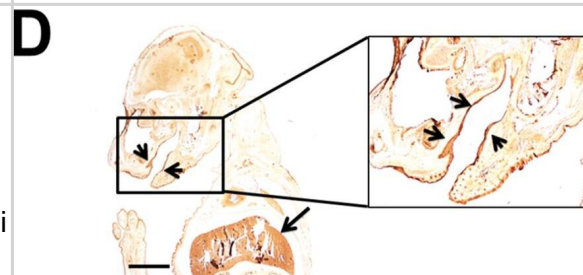


Immunohistochemistry: COLEC10 Antibody (4C1) [H00010584-M01] - Cellular and embryonic localisation of CL-L1. Immunofluorescence showing co-localisation of CL-L1 and Laminin in E13.5 mouse embryos sections. CL-L1 is expressed in the basal membrane of the epithelium in the palate shelf of the maxilla (arrows). In contrast Laminin expression is present all around the epithelium membrane. A faint but clear CL-L1 expression is also observed in the cytoplasm of the epithelium and in the mesenchyme of the palate. PSM; rostral extremity of right palatal shelf of maxilla. Scale bar 100 μ m. Image collected and cropped by CiteAb from the following publication (<https://dx.plos.org/10.1371/journal.pgen.1006679>), licensed under a CC-BY license.

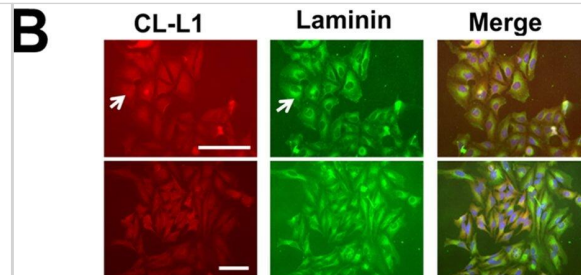
Sandwich ELISA: COLEC10 Antibody (4C1) [H00010584-M01] - Detection limit for recombinant GST tagged COLEC10 is 1 ng/ml as a capture antibody.



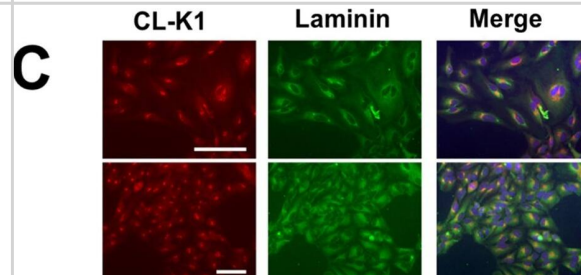
Immunohistochemistry-Paraffin: COLEC10 Antibody (4C1) [H00010584-M01] - Cellular & embryonic localisation of CL-L1. A. Immunostaining of ATDC5 cells with the golgi marker 58K & CL-L1. CL-L1 shows localisation with golgi apparatus (white arrow). B. Laminin & CL-L1 coimmunolocalisation. Laminin shows partial cellular immunolocalisation with CL-L1 around the golgi area (arrows). Scale bar 50 μ m C. Laminin & CL-K1 coimmunolocalisation. CL-K1 staining shows a very strong golgi localisation with partial cytoplasmatic laminin colocalisation. D. CL-L1 immunohistochemistry of a 18.5 days postfertilisation mouse embryo. CL-L1 is expressed in the liver (long arrow) & submucosal palatal region (short arrows). E. Immunofluorescence showing co-localisation of CL-L1 & Laminin in E13.5 mouse embryos sections. CL-L1 is expressed in the basal membrane of the epithelium in the palate shelf of the maxilla (arrows). In contrast Laminin expression is present all around the epithelium membrane. A faint but clear CL-L1 expression is also observed in the cytoplasm of the epithelium & in the mesenchyme of the palate. PSM; rostral extremity of right palatal shelf of maxilla. Scale bar 100 μ m. Image collected & cropped by CiteAb from the following publication (<https://pubmed.ncbi.nlm.nih.gov/28301481>), licensed under a CC-BY license. Not internally tested by Novus Biologicals.



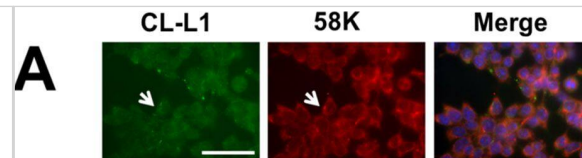
Immunocytochemistry/ Immunofluorescence: COLEC10 Antibody (4C1) [H00010584-M01] - Cellular & embryonic localisation of CL-L1.A. Immunostaining of ATDC5 cells with the golgi marker 58K & CL-L1. CL-L1 shows localisation with golgi apparatus (white arrow). B. Laminin & CL-L1 coimmunolocalisation. Laminin shows partial cellular immunolocalisation with CL-L1 around the golgi area (arrows). Scale bar 50 μ m C. Laminin & CL-K1 coimmunolocalisation. CL-K1 staining shows a very strong golgi localisation with partial cytoplasmatic laminin colocalisation. D. CL-L1 immunohistochemistry of a 18.5 days postfertilisation mouse embryo. CL-L1 is expressed in the liver (long arrow) & submucosal palatal region (short arrows). E. Immunofluorescence showing co-localisation of CL-L1 & Laminin in E13.5 mouse embryos sections. CL-L1 is expressed in the basal membrane of the epithelium in the palate shelf of the maxilla (arrows). In contrast Laminin expression is present all around the epithelium membrane. A faint but clear CL-L1 expression is also observed in the cytoplasm of the epithelium & in the mesenchyme of the palate. PSM; rostral extremity of right palatal shelf of maxilla. Scale bar 100 μ m. Image collected & cropped by CiteAb from the following publication (<https://pubmed.ncbi.nlm.nih.gov/28301481>), licensed under a CC-BY license. Not internally tested by Novus Biologicals.



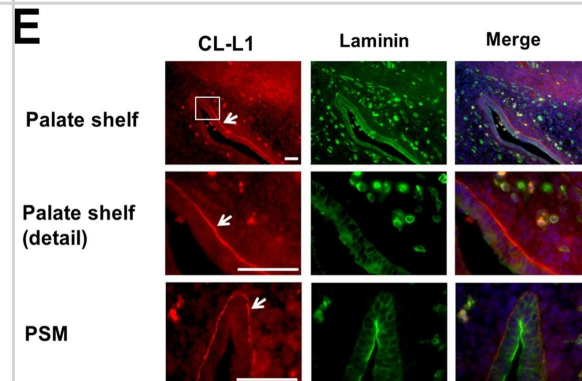
Immunocytochemistry/ Immunofluorescence: COLEC10 Antibody (4C1) [H00010584-M01] - Cellular & embryonic localisation of CL-L1.A. Immunostaining of ATDC5 cells with the golgi marker 58K & CL-L1. CL-L1 shows localisation with golgi apparatus (white arrow). B. Laminin & CL-L1 coimmunolocalisation. Laminin shows partial cellular immunolocalisation with CL-L1 around the golgi area (arrows). Scale bar 50 μ m C. Laminin & CL-K1 coimmunolocalisation. CL-K1 staining shows a very strong golgi localisation with partial cytoplasmatic laminin colocalisation. D. CL-L1 immunohistochemistry of a 18.5 days postfertilisation mouse embryo. CL-L1 is expressed in the liver (long arrow) & submucosal palatal region (short arrows). E. Immunofluorescence showing co-localisation of CL-L1 & Laminin in E13.5 mouse embryos sections. CL-L1 is expressed in the basal membrane of the epithelium in the palate shelf of the maxilla (arrows). In contrast Laminin expression is present all around the epithelium membrane. A faint but clear CL-L1 expression is also observed in the cytoplasm of the epithelium & in the mesenchyme of the palate. PSM; rostral extremity of right palatal shelf of maxilla. Scale bar 100 μ m. Image collected & cropped by CiteAb from the following publication (<https://pubmed.ncbi.nlm.nih.gov/28301481>), licensed under a CC-BY license. Not internally tested by Novus Biologicals.



Immunocytochemistry/ Immunofluorescence: COLEC10 Antibody (4C1) [H00010584-M01] - Cellular & embryonic localisation of CL-L1. A. Immunostaining of ATDC5 cells with the golgi marker 58K & CL-L1. CL-L1 shows localisation with golgi apparatus (white arrow). B. Laminin & CL-L1 coimmunolocalisation. Laminin shows partial cellular immunolocalisation with CL-L1 around the golgi area (arrows). Scale bar 50 μ m C. Laminin & CL-K1 coimmunolocalisation. CL-K1 staining shows a very strong golgi localisation with partial cytoplasmic laminin colocalisation. D. CL-L1 immunohistochemistry of a 18.5 days postfertilisation mouse embryo. CL-L1 is expressed in the liver (long arrow) & submucosal palatal region (short arrows). E. Immunofluorescence showing co-localisation of CL-L1 & Laminin in E13.5 mouse embryos sections. CL-L1 is expressed in the basal membrane of the epithelium in the palate shelf of the maxilla (arrows). In contrast Laminin expression is present all around the epithelium membrane. A faint but clear CL-L1 expression is also observed in the cytoplasm of the epithelium & in the mesenchyme of the palate. PSM; rostral extremity of right palatal shelf of maxilla. Scale bar 100 μ m. Image collected & cropped by CiteAb from the following publication (<https://pubmed.ncbi.nlm.nih.gov/28301481>), licensed under a CC-BY license. Not internally tested by Novus Biologicals.



Immunocytochemistry/ Immunofluorescence: COLEC10 Antibody (4C1) [H00010584-M01] - Cellular & embryonic localisation of CL-L1. A. Immunostaining of ATDC5 cells with the golgi marker 58K & CL-L1. CL-L1 shows localisation with golgi apparatus (white arrow). B. Laminin & CL-L1 coimmunolocalisation. Laminin shows partial cellular immunolocalisation with CL-L1 around the golgi area (arrows). Scale bar 50 μ m C. Laminin & CL-K1 coimmunolocalisation. CL-K1 staining shows a very strong golgi localisation with partial cytoplasmic laminin colocalisation. D. CL-L1 immunohistochemistry of a 18.5 days postfertilisation mouse embryo. CL-L1 is expressed in the liver (long arrow) & submucosal palatal region (short arrows). E. Immunofluorescence showing co-localisation of CL-L1 & Laminin in E13.5 mouse embryos sections. CL-L1 is expressed in the basal membrane of the epithelium in the palate shelf of the maxilla (arrows). In contrast Laminin expression is present all around the epithelium membrane. A faint but clear CL-L1 expression is also observed in the cytoplasm of the epithelium & in the mesenchyme of the palate. PSM; rostral extremity of right palatal shelf of maxilla. Scale bar 100 μ m. Image collected & cropped by CiteAb from the following publication (<https://pubmed.ncbi.nlm.nih.gov/28301481>), licensed under a CC-BY license. Not internally tested by Novus Biologicals.



Publications

Munye MM, Diaz-Font A, Ocaka L et al. COLEC10 is mutated in 3MC patients and regulates early craniofacial development PLoS Genet 2017-03-01 [PMID: 28301481] (IF/IHC, Mouse)

**Novus Biologicals USA**

10730 E. Briarwood Avenue
Centennial, CO 80112
USA
Phone: 303.730.1950
Toll Free: 1.888.506.6887
Fax: 303.730.1966
nb-customerservice@bio-techne.com

Bio-Techne Canada

21 Canmotor Ave
Toronto, ON M8Z 4E6
Canada
Phone: 905.827.6400
Toll Free: 855.668.8722
Fax: 905.827.6402
canada.inquires@bio-techne.com

Bio-Techne Ltd

19 Barton Lane
Abingdon Science Park
Abingdon, OX14 3NB, United Kingdom
Phone: (44) (0) 1235 529449
Free Phone: 0800 37 34 15
Fax: (44) (0) 1235 533420
info.EMEA@bio-techne.com

General Contact Information

www.novusbio.com
Technical Support: nb-technical@bio-techne.com
Orders: nb-customerservice@bio-techne.com
General: novus@novusbio.com

Products Related to H00010584-M01

HAF007	Goat anti-Mouse IgG Secondary Antibody [HRP]
NB720-B	Rabbit anti-Mouse IgG (H+L) Secondary Antibody [Biotin]
NBP1-96981-0.5mg	Mouse IgG2a Kappa Isotype Control (M2AK)
H00010584-Q01-10ug	Recombinant Human COLEC10 GST (N-Term) Protein

Limitations

This product is for research use only and is not approved for use in humans or in clinical diagnosis. Primary Antibodies are guaranteed for 1 year from date of receipt.

For more information on our 100% guarantee, please visit www.novusbio.com/guarantee

Earn gift cards/discounts by submitting a review: www.novusbio.com/reviews/submit/H00010584-M01

Earn gift cards/discounts by submitting a publication using this product:
www.novusbio.com/publications

