

Product Datasheet

C1D Antibody (6H2) - Azide and BSA Free H00010438-M03-100ug

Unit Size: 100 ug

Aliquot and store at -20C or -80C. Avoid freeze-thaw cycles.

www.novusbio.com



technical@novusbio.com

Protocols, Publications, Related Products, Reviews, Research Tools and Images at:
www.novusbio.com/H00010438-M03

Updated 2/21/2025 v.20.1

Earn rewards for product
reviews and publications.

Submit a publication at www.novusbio.com/publications

Submit a review at www.novusbio.com/reviews/destination/H00010438-M03



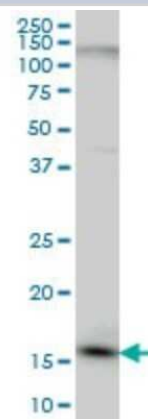
H00010438-M03-100ug

C1D Antibody (6H2) - Azide and BSA Free

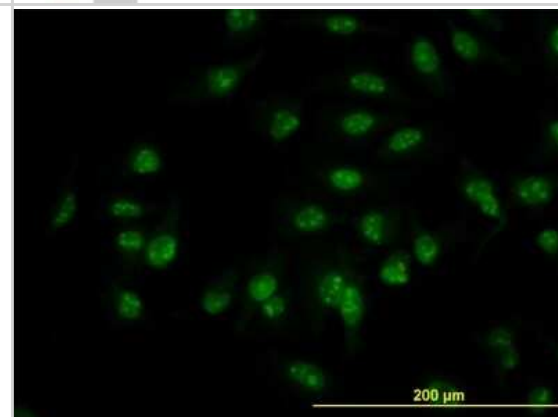
Product Information	
Unit Size	100 ug
Concentration	Concentrations vary lot to lot. See vial label for concentration. If unlisted please contact technical services.
Storage	Aliquot and store at -20C or -80C. Avoid freeze-thaw cycles.
Clonality	Monoclonal
Clone	6H2
Preservative	No Preservative
Isotype	IgG2a Kappa
Purity	IgG purified
Buffer	In 1x PBS, pH 7.4
Product Description	
Host	Mouse
Gene ID	10438
Gene Symbol	C1D
Species	Human
Reactivity Notes	Human. Other species not tested.
Specificity/Sensitivity	C1D - nuclear DNA-binding protein
Immunogen	C1D (AAH05235, 1 a.a. ~ 141 a.a) full-length recombinant protein with GST tag. MW of the GST tag alone is 26 KDa. MAGEEINEDYPVEIHEYLSAFENSIGAVDEMLKTMMSVSRNELLQKLDPLEQAK VDLV SAYTLNSMFWVYLATQGVNPKEHPVKQELERIRVYMNRVKEITDKKKAG KLDRGAASRFVKNALWEPKSKNASKVANKGKSKS
Notes	This product is produced by and distributed for Abnova, a company based in Taiwan.
Product Application Details	
Applications	Western Blot, ELISA, Immunocytochemistry/ Immunofluorescence, Immunohistochemistry, Immunohistochemistry-Paraffin
Recommended Dilutions	Western Blot 1:500, ELISA, Immunohistochemistry, Immunocytochemistry/ Immunofluorescence, Immunohistochemistry-Paraffin
Application Notes	Antibody reactive against cell lysate and recombinant protein for Western Blot. Has also been used for immunofluorescence, immunohistochemistry (paraffin) and ELISA.

Images

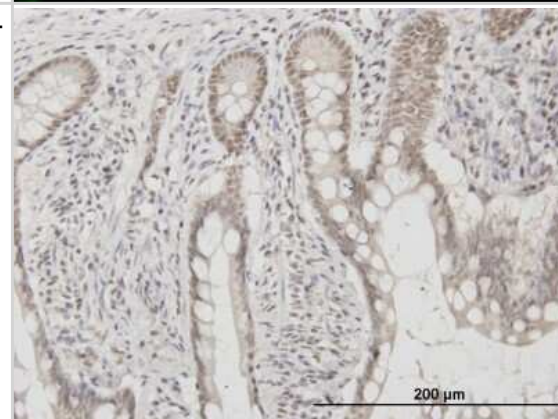
Western Blot: C1D Antibody (6H2) [H00010438-M03] - Analysis of C1D expression in HeLa (Cat # L013V1).



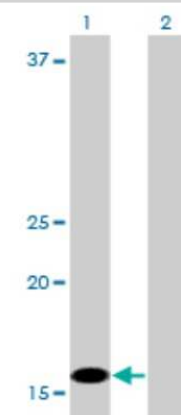
Immunocytochemistry/Immunofluorescence: C1D Antibody (6H2) [H00010438-M03] - Analysis of monoclonal antibody to C1D on HeLa cell. Antibody concentration 10 ug/ml



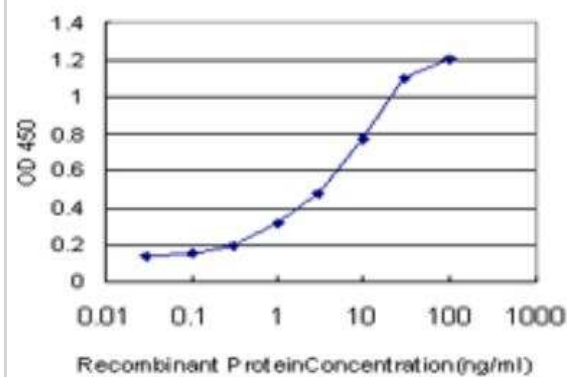
Immunohistochemistry-Paraffin: C1D Antibody (6H2) [H00010438-M03] - Analysis of monoclonal antibody to C1D on formalin-fixed paraffin-embedded human colon. Antibody concentration 1 ug/ml



Western Blot: C1D Antibody (6H2) [H00010438-M03] - Analysis of C1D expression in transfected 293T cell line by C1D monoclonal antibody (M03), clone 6H2. Lane 1: C1D transfected lysate (16 KDa). Lane 2: Non-transfected lysate.



ELISA: C1D Antibody (6H2) [H00010438-M03] - Detection limit for recombinant GST tagged C1D is approximately 0.1ng/ml as a capture antibody.





Novus Biologicals USA

10730 E. Briarwood Avenue
Centennial, CO 80112
USA
Phone: 303.730.1950
Toll Free: 1.888.506.6887
Fax: 303.730.1966
nb-customerservice@bio-techne.com

Bio-Techne Canada

21 Canmotor Ave
Toronto, ON M8Z 4E6
Canada
Phone: 905.827.6400
Toll Free: 855.668.8722
Fax: 905.827.6402
canada.inquires@bio-techne.com

Bio-Techne Ltd

19 Barton Lane
Abingdon Science Park
Abingdon, OX14 3NB, United Kingdom
Phone: (44) (0) 1235 529449
Free Phone: 0800 37 34 15
Fax: (44) (0) 1235 533420
info.EMEA@bio-techne.com

General Contact Information

www.novusbio.com
Technical Support: nb-technical@bio-techne.com
Orders: nb-customerservice@bio-techne.com
General: novus@novusbio.com

Error: Subreport could not be shown.

Limitations

This product is for research use only and is not approved for use in humans or in clinical diagnosis. Primary Antibodies are guaranteed for 1 year from date of receipt.

For more information on our 100% guarantee, please visit www.novusbio.com/guarantee

Earn gift cards/discounts by submitting a review: www.novusbio.com/reviews/submit/H00010438-M03

Earn gift cards/discounts by submitting a publication using this product:
www.novusbio.com/publications

