

# Product Datasheet

## Recombinant Human SLC24A1 GST (N-Term) Protein H00009187-Q01-10ug

Unit Size: 10 ug

Store at -80C. Avoid freeze-thaw cycles.

[www.novusbio.com](http://www.novusbio.com)



[technical@novusbio.com](mailto:technical@novusbio.com)

Protocols, Publications, Related Products, Reviews, Research Tools and Images at:  
[www.novusbio.com/H00009187-Q01](http://www.novusbio.com/H00009187-Q01)

Updated 7/23/2024 v.20.1

Earn rewards for product  
reviews and publications.

Submit a publication at [www.novusbio.com/publications](http://www.novusbio.com/publications)

Submit a review at [www.novusbio.com/reviews/destination/H00009187-Q01](http://www.novusbio.com/reviews/destination/H00009187-Q01)

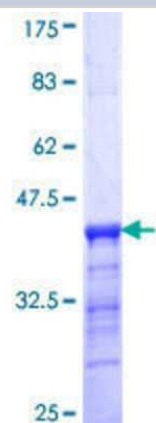


**H00009187-Q01-10ug****Recombinant Human SLC24A1 GST (N-Term) Protein**

<b>Product Information</b>	
<b>Unit Size</b>	10 ug
<b>Concentration</b>	Please see the vial label for concentration. If unlisted please contact technical services.
<b>Storage</b>	Store at -80C. Avoid freeze-thaw cycles.
<b>Preservative</b>	No Preservative
<b>Purity</b>	>80% by SDS-PAGE and Coomassie blue staining
<b>Buffer</b>	50 mM Tris-HCl, 10 mM reduced Glutathione, pH 8.0 in the elution buffer.
<b>Target Molecular Weight</b>	37.51 kDa
<b>Product Description</b>	
<b>Description</b>	<p>A recombinant protein with a N-terminal GST tag corresponding to the amino acid sequence 162-268 of Human SLC24A1</p> <p><b>Source:</b> <i>Wheat Germ (in vitro)</i></p> <p><b>Amino Acid Sequence:</b>  IVKKYTPTPRGEMKSYSPTQVREKVKYTPSPRGRRVGTYPSTFMTMETSHAI  TPRTTVKDSIDATYKILETNSLKRIMEETPTTLKGMFDSTPTFLTHEVEANV</p>
<b>Gene ID</b>	9187
<b>Gene Symbol</b>	SLC24A1
<b>Species</b>	Human
<b>Preparation Method</b>	in vitro wheat germ expression system
<b>Details of Functionality</b>	This protein was produced in an in vitro wheat germ expression system that should preserve correct conformational folding that is necessary for biological function. While it is possible that this protein could display some level of activity, the functionality of this protein has not been explicitly measured or validated.
<b>Notes</b>	This product is produced by and distributed for Abnova, a company based in Taiwan.
<b>Product Application Details</b>	
<b>Applications</b>	Western Blot, ELISA, Protein Array, SDS-Page, Immunoaffinity Purification
<b>Recommended Dilutions</b>	Western Blot, ELISA, SDS-Page, Protein Array, Immunoaffinity Purification

## Images

SDS-Page: Recombinant Human SLC24A1 Protein [H00009187-Q01] - 12.5% SDS-PAGE Stained with Coomassie Blue.





### **Novus Biologicals USA**

10730 E. Briarwood Avenue  
Centennial, CO 80112  
USA  
Phone: 303.730.1950  
Toll Free: 1.888.506.6887  
Fax: 303.730.1966  
nb-customerservice@bio-techne.com

### **Bio-Techne Canada**

21 Canmotor Ave  
Toronto, ON M8Z 4E6  
Canada  
Phone: 905.827.6400  
Toll Free: 855.668.8722  
Fax: 905.827.6402  
canada.inquires@bio-techne.com

### **Bio-Techne Ltd**

19 Barton Lane  
Abingdon Science Park  
Abingdon, OX14 3NB, United Kingdom  
Phone: (44) (0) 1235 529449  
Free Phone: 0800 37 34 15  
Fax: (44) (0) 1235 533420  
info.EMEA@bio-techne.com

### **General Contact Information**

[www.novusbio.com](http://www.novusbio.com)  
Technical Support: nb-technical@bio-techne.com  
Orders: nb-customerservice@bio-techne.com  
General: novus@novusbio.com

### **Limitations**

This product is for research use only and is not approved for use in humans or in clinical diagnosis. Peptides and proteins are guaranteed for 3 months from date of receipt.

For more information on our 100% guarantee, please visit [www.novusbio.com/guarantee](http://www.novusbio.com/guarantee)

Earn gift cards/discounts by submitting a review: [www.novusbio.com/reviews/submit/H00009187-Q01](http://www.novusbio.com/reviews/submit/H00009187-Q01)

Earn gift cards/discounts by submitting a publication using this product:  
[www.novusbio.com/publications](http://www.novusbio.com/publications)

