

# Product Datasheet

## KLF11 Antibody (10D8) - Azide and BSA Free H00008462-M03

Unit Size: 0.1 mg

Aliquot and store at -20C or -80C. Avoid freeze-thaw cycles.

[www.novusbio.com](http://www.novusbio.com)



[technical@novusbio.com](mailto:technical@novusbio.com)

**Reviews: 1 Publications: 8**

Protocols, Publications, Related Products, Reviews, Research Tools and Images at:  
[www.novusbio.com/H00008462-M03](http://www.novusbio.com/H00008462-M03)

Updated 2/21/2025 v.20.1

**Earn rewards for product  
reviews and publications.**

Submit a publication at [www.novusbio.com/publications](http://www.novusbio.com/publications)

Submit a review at [www.novusbio.com/reviews/destination/H00008462-M03](http://www.novusbio.com/reviews/destination/H00008462-M03)

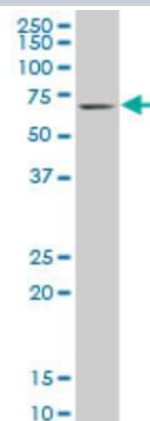


**H00008462-M03****KLF11 Antibody (10D8) - Azide and BSA Free**

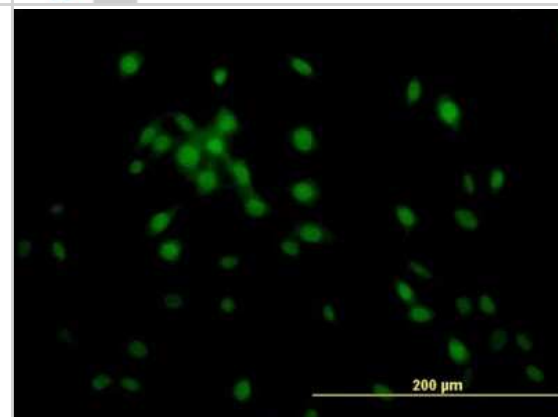
<b>Product Information</b>	
<b>Unit Size</b>	0.1 mg
<b>Concentration</b>	Concentrations vary lot to lot. See vial label for concentration. If unlisted please contact technical services.
<b>Storage</b>	Aliquot and store at -20C or -80C. Avoid freeze-thaw cycles.
<b>Clonality</b>	Monoclonal
<b>Clone</b>	10D8
<b>Preservative</b>	No Preservative
<b>Isotype</b>	IgG2a Kappa
<b>Purity</b>	IgG purified
<b>Buffer</b>	In 1x PBS, pH 7.4
<b>Product Description</b>	
<b>Description</b>	Quality control test: Antibody Reactive Against Recombinant Protein.
<b>Host</b>	Mouse
<b>Gene ID</b>	8462
<b>Gene Symbol</b>	KLF11
<b>Species</b>	Human, Mouse, Rat
<b>Reactivity Notes</b>	Please note that this antibody is reactive to Mouse and derived from the same host, Mouse. Additional Mouse on Mouse blocking steps may be required for IHC and ICC experiments. Please contact Technical Support for more information.
<b>Specificity/Sensitivity</b>	KLF11 - Kruppel-like factor 11 (10D8)
<b>Immunogen</b>	KLF11 (NP_003588, 404 a.a. ~ 512 a.a) partial recombinant protein with GST tag. MW of the GST tag alone is 26 KDa. TYFKSSHLKAHLRTHHTGEKPFNCSDGCDKKFARSDELRSRHRRTHTGEKKFV CPVCDRRFMRSDHLTKHARRHMTTKKIPGWQAEVGKLNRIASAEPSGSPPLVS MPASA
<b>Notes</b>	This product is produced by and distributed for Abnova, a company based in Taiwan.
<b>Product Application Details</b>	
<b>Applications</b>	Western Blot, ELISA, Immunocytochemistry/ Immunofluorescence, Immunohistochemistry, Immunohistochemistry-Paraffin, Immunoprecipitation, Chromatin Immunoprecipitation (ChIP)
<b>Recommended Dilutions</b>	Western Blot, ELISA, Immunohistochemistry, Immunocytochemistry/ Immunofluorescence, Immunoprecipitation, Immunohistochemistry-Paraffin, Chromatin Immunoprecipitation (ChIP)
<b>Application Notes</b>	Antibody reactivity against cell lysate and recombinant protein for WB. It has also been used for IF, ELISA, ChIP and IHC-P. Use in Immunoprecipitation reported in scientific literature (PMID: 23408111).

## Images

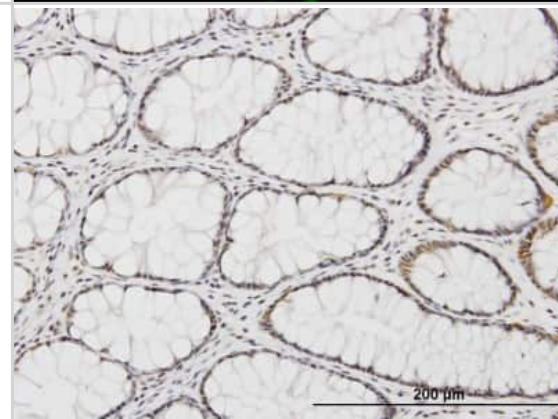
Western Blot: KLF11 Antibody (10D8) [H00008462-M03] - Analysis of KLF11 expression in NIH/3T3 (Cat # L018V1).



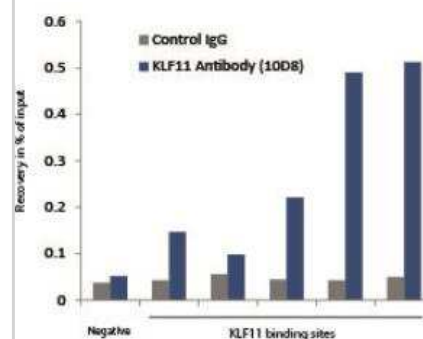
Immunocytochemistry/Immunofluorescence: KLF11 Antibody (10D8) [H00008462-M03] - Analysis of monoclonal antibody to KLF11 on NIH/3T3 cell. Antibody concentration 10 ug/ml



Immunohistochemistry-Paraffin: KLF11 Antibody (10D8) [H00008462-M03] - Analysis of monoclonal antibody to KLF11 on formalin-fixed paraffin-embedded human colon. Antibody concentration 3 ug/ml



Chromatin Immunoprecipitation: KLF11 Antibody (10D8) [H00008462-M03] - 5 ug KLF11 antibody on human adipocytes - data from a customer review.



## Publications

Lin L, Pfender K, Ditsch N et al. KLF11 is an independent negative prognostic factor for breast cancer from a cohort study and induces proliferation and inhibits apoptosis in vitro Breast cancer (Tokyo, Japan) 2023-05-18 [PMID: 37199905] (IHC-P, Human)

Ambrogio L, Maria O, Luigi V et al. Survivin, Sonic hedgehog, Kruppel-like factors, and p53 pathway in serous ovarian cancer: an immunohistochemical study. Hum Pathol. 2022-06-28 [PMID: 35777700]

Lin L The role of Tumor-associated Macrophages (TAMs) and Transcription Factor KLF11 in breast cancer (BC) and KLF11-mediated Transcriptional Regulation of BC-associated TAMs Thesis 2022-01-01 (ICC/IF, IF/IHC, Human)

De Lorenzo SB, Vrieze AM, Johnson RA et al. KLF11 deficiency enhances chemokine generation and fibrosis in murine unilateral ureteral obstruction PloS one [PMID: 35413089] (IF/IHC, Mouse)

Tang X, Liu K, Hamblin MH et al. Genetic Deletion of Kruppel-Like Factor 11 Aggravates Ischemic Brain Injury. Mol. Neurobiol. 2017-04-29 [PMID: 28456933] (WB, Mouse)

Mathison A, Escande C, Calvo E et al. Phenotypic Characterization of Mice Carrying Homozygous Deletion of KLF11, a Gene in Which Mutations Cause Human Neonatal and MODY VII Diabetes. Endocrinology 2015-10-01 [PMID: 26248217]

Loft A, Forss I, Siersbaek MS et al. Browning of human adipocytes requires KLF11 and reprogramming of PPARgamma superenhancers. Genes Dev 2015-01-01 [PMID: 25504365] (Chemotaxis, WB, Human)

Yin KJ, Fan Y, Hamblin M et al. KLF11 mediates PPARgamma cerebrovascular protection in ischaemic stroke. Brain 2013-02-12 [PMID: 23408111] (WB, IP, Mouse)





### **Novus Biologicals USA**

10730 E. Briarwood Avenue  
Centennial, CO 80112  
USA  
Phone: 303.730.1950  
Toll Free: 1.888.506.6887  
Fax: 303.730.1966  
nb-customerservice@bio-techne.com

### **Bio-Techne Canada**

21 Canmotor Ave  
Toronto, ON M8Z 4E6  
Canada  
Phone: 905.827.6400  
Toll Free: 855.668.8722  
Fax: 905.827.6402  
canada.inquires@bio-techne.com

### **Bio-Techne Ltd**

19 Barton Lane  
Abingdon Science Park  
Abingdon, OX14 3NB, United Kingdom  
Phone: (44) (0) 1235 529449  
Free Phone: 0800 37 34 15  
Fax: (44) (0) 1235 533420  
info.EMEA@bio-techne.com

### **General Contact Information**

[www.novusbio.com](http://www.novusbio.com)  
Technical Support: nb-technical@bio-techne.com  
Orders: nb-customerservice@bio-techne.com  
General: novus@novusbio.com

### **Products Related to H00008462-M03**

HAF007	Goat anti-Mouse IgG Secondary Antibody [HRP]
NB720-B	Rabbit anti-Mouse IgG (H+L) Secondary Antibody [Biotin]
NBP1-96981-0.5mg	Mouse IgG2a Kappa Isotype Control (M2AK)
NBP2-58081PEP	KLF11 Recombinant Protein Antigen

### **Limitations**

This product is for research use only and is not approved for use in humans or in clinical diagnosis. Primary Antibodies are guaranteed for 1 year from date of receipt.

For more information on our 100% guarantee, please visit [www.novusbio.com/guarantee](http://www.novusbio.com/guarantee)

Earn gift cards/discounts by submitting a review: [www.novusbio.com/reviews/submit/H00008462-M03](http://www.novusbio.com/reviews/submit/H00008462-M03)

Earn gift cards/discounts by submitting a publication using this product:  
[www.novusbio.com/publications](http://www.novusbio.com/publications)

