

# Product Datasheet

## KLF10 Antibody (1H3) - Azide and BSA Free H00007071-M15

Unit Size: 0.1 mg

Aliquot and store at -20C or -80C. Avoid freeze-thaw cycles.

[www.novusbio.com](http://www.novusbio.com)



[technical@novusbio.com](mailto:technical@novusbio.com)

Protocols, Publications, Related Products, Reviews, Research Tools and Images at:  
[www.novusbio.com/H00007071-M15](http://www.novusbio.com/H00007071-M15)

Updated 2/21/2025 v.20.1

Earn rewards for product  
reviews and publications.

Submit a publication at [www.novusbio.com/publications](http://www.novusbio.com/publications)

Submit a review at [www.novusbio.com/reviews/destination/H00007071-M15](http://www.novusbio.com/reviews/destination/H00007071-M15)



**H00007071-M15**

KLF10 Antibody (1H3) - Azide and BSA Free

**Product Information**

|                      |  |
|----------------------|--|
| <b>Unit Size</b>     | 0.1 mg   |
| <b>Concentration</b> | This product is unpurified. The exact concentration of antibody is not quantifiable. |
| <b>Storage</b>       | Aliquot and store at -20C or -80C. Avoid freeze-thaw cycles.                         |
| <b>Clonality</b>     | Monoclonal   |
| <b>Clone</b>         | 1H3  |
| <b>Preservative</b>  | No Preservative  |
| <b>Isotype</b>       | IgG2a Kappa  |
| <b>Purity</b>        | Ascites  |
| <b>Buffer</b>        | In 1x PBS, pH 7.4  |

**Product Description**

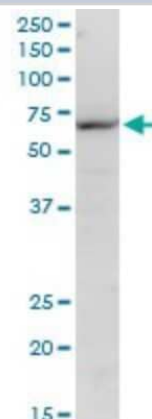
|                         |   |
|-------------------------|---|
| <b>Description</b>      | Quality control test: Antibody Reactive Against Recombinant Protein.  |
| <b>Host</b>             | Mouse   |
| <b>Gene ID</b>          | 7071  |
| <b>Gene Symbol</b>      | KLF10   |
| <b>Species</b>          | Human, Mouse, Rat   |
| <b>Reactivity Notes</b> | Please note that this antibody is reactive to Mouse and derived from the same host, Mouse. Additional Mouse on Mouse blocking steps may be required for IHC and ICC experiments. Please contact Technical Support for more information. |
| <b>Immunogen</b>        | KLF10 (AAH11538.1, 111 a.a. ~ 210 a.a) partial recombinant protein with GST tag. MW of the GST tag alone is 26 KDa.<br>LSDTAKPHIAAPFKEEEKSPVSAPKLPKAQATSVIRHTADAQLCNHQTCPMKAA<br>SILNYQNNSFRRRTHLNVEAARKNIPCAAVSPNRSKCERNTVADVD         |
| <b>Notes</b>            | This product is produced by and distributed for Abnova, a company based in Taiwan.  |

**Product Application Details**

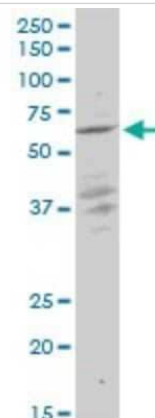
|                              |                     |
|------------------------------|---------------------|
| <b>Applications</b>          | Western Blot, ELISA |
| <b>Recommended Dilutions</b> | Western Blot, ELISA |

**Images**

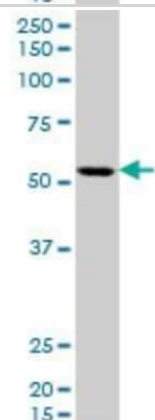
Western Blot: KLF10 Antibody (1H3) [H00007071-M15] - Analysis of KLF10 expression in NIH/3T3 (Cat # L018V1).



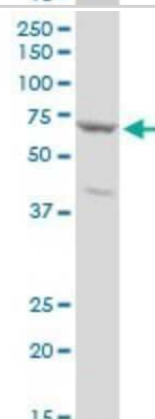
Western Blot: KLF10 Antibody (1H3) [H00007071-M15] - Analysis of KLF10 expression in PC-12 (Cat # L012V1).



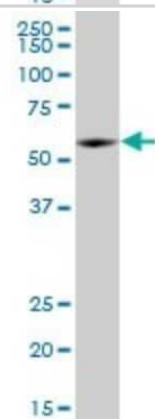
Western Blot: KLF10 Antibody (1H3) [H00007071-M15] - Analysis of KLF10 expression in A-549 (Cat # L025V1).



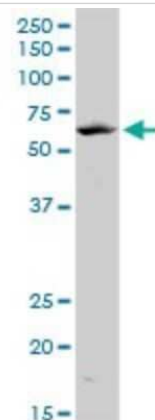
Western Blot: KLF10 Antibody (1H3) [H00007071-M15] - Analysis of KLF10 expression in Raw 264.7 (Cat # L024V1).



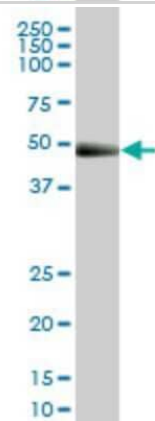
Western Blot: KLF10 Antibody (1H3) [H00007071-M15] - Analysis of KLF10 expression in Y-79 (Cat # L042V1).



Western Blot: KLF10 Antibody (1H3) [H00007071-M15] - Analysis of KLF10 expression in Jurkat (Cat # L017V1).



Western Blot: KLF10 Antibody (1H3) [H00007071-M15] - Analysis of KLF10 expression in human colon.



**Novus Biologicals USA**

10730 E. Briarwood Avenue  
Centennial, CO 80112  
USA  
Phone: 303.730.1950  
Toll Free: 1.888.506.6887  
Fax: 303.730.1966  
nb-customerservice@bio-techne.com

**Bio-Techne Canada**

21 Canmotor Ave  
Toronto, ON M8Z 4E6  
Canada  
Phone: 905.827.6400  
Toll Free: 855.668.8722  
Fax: 905.827.6402  
canada.inquires@bio-techne.com

**Bio-Techne Ltd**

19 Barton Lane  
Abingdon Science Park  
Abingdon, OX14 3NB, United Kingdom  
Phone: (44) (0) 1235 529449  
Free Phone: 0800 37 34 15  
Fax: (44) (0) 1235 533420  
info.EMEA@bio-techne.com

**General Contact Information**

[www.novusbio.com](http://www.novusbio.com)  
Technical Support: nb-technical@bio-techne.com  
Orders: nb-customerservice@bio-techne.com  
General: novus@novusbio.com

**Products Related to H00007071-M15**

|                  |   |
|------------------|---|
| HAF007           | Goat anti-Mouse IgG Secondary Antibody [HRP]            |
| NB720-B          | Rabbit anti-Mouse IgG (H+L) Secondary Antibody [Biotin] |
| NBP1-96981-0.5mg | Mouse IgG2a Kappa Isotype Control (M2AK)                |
| 7754-BH-005/CF   | TGF-beta 1 [Unconjugated]                               |

**Limitations**

This product is for research use only and is not approved for use in humans or in clinical diagnosis. Primary Antibodies are guaranteed for 1 year from date of receipt.

For more information on our 100% guarantee, please visit [www.novusbio.com/guarantee](http://www.novusbio.com/guarantee)

Earn gift cards/discounts by submitting a review: [www.novusbio.com/reviews/submit/H00007071-M15](http://www.novusbio.com/reviews/submit/H00007071-M15)

Earn gift cards/discounts by submitting a publication using this product:  
[www.novusbio.com/publications](http://www.novusbio.com/publications)

