

Product Datasheet

SUR1 Antibody (3G5) **H00006833-M01-100ug**

Unit Size: 100 ug

Aliquot and store at -20C or -80C. Avoid freeze-thaw cycles.

www.novusbio.com



technical@novusbio.com

Publications: 1

Protocols, Publications, Related Products, Reviews, Research Tools and Images at:
www.novusbio.com/H00006833-M01

Updated 6/27/2023 v.20.1

**Earn rewards for product
reviews and publications.**

Submit a publication at www.novusbio.com/publications

Submit a review at www.novusbio.com/reviews/destination/H00006833-M01



H00006833-M01-100ug

SUR1 Antibody (3G5)

Product Information

Unit Size	100 ug
Concentration	This product is unpurified. The exact concentration of antibody is not quantifiable.
Storage	Aliquot and store at -20C or -80C. Avoid freeze-thaw cycles.
Clonality	Monoclonal
Clone	3G5
Preservative	No Preservative
Isotype	IgG2a Kappa
Purity	Ascites
Buffer	In 1x PBS, pH 7.4

Product Description

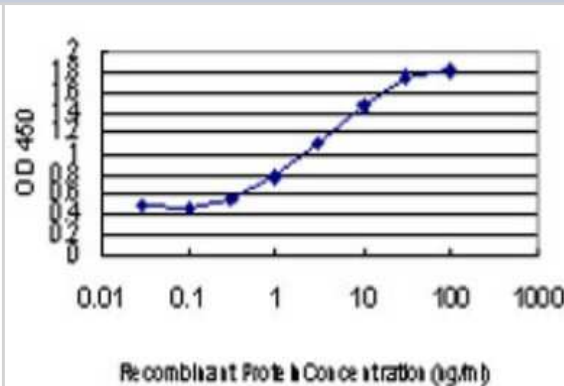
Description	Quality control test: Antibody Reactive Against Recombinant Protein.
Host	Mouse
Gene ID	6833
Gene Symbol	ABCC8
Species	Human
Specificity/Sensitivity	ABCC8 - ATP-binding cassette, sub-family C (CFTR/MRP), member 8 (3G5)
Immunogen	ABCC8 (NP_000343, 611 a.a. ~ 710 a.a) partial recombinant protein with GST tag. MW of the GST tag alone is 26 KDa. SEFLSSAEIREEQCAPHEPTPQQPASKYQAVPLRVVNRKRPAREDCRGLTGPL QSLVPSADGDADNCCVQIMGGYFTWTPDGIPTLSNITIRIPRGQLTM
Notes	This product is produced by and distributed for Abnova, a company based in Taiwan.

Product Application Details

Applications	Western Blot, ELISA, Sandwich ELISA
Recommended Dilutions	Western Blot, ELISA, Sandwich ELISA
Application Notes	Antibody reactivity against Recombinant Protein with GST tag on ELISA and WB. GST tag alone is used as a negative control.

Images

Sandwich ELISA: SUR1 Antibody (3G5) [H00006833-M01] - Detection limit for recombinant GST tagged ABCC8 is approximately 0.03ng/ml as a capture antibody.



Publications

Chowdhury UR, Bahler CK, Hann CR et al. ATP-Sensitive Potassium (KATP) Channel Activation Decreases Intraocular Pressure in the Anterior Chamber of the Eye. Invest Ophthalmol Vis Sci. 2011-07-08 [PMID: 21743021]



Novus Biologicals USA

10730 E. Briarwood Avenue
Centennial, CO 80112
USA
Phone: 303.730.1950
Toll Free: 1.888.506.6887
Fax: 303.730.1966
novus@novusbio.com

Bio-Techne Canada

21 Canmotor Ave
Toronto, ON M8Z 4E6
Canada
Phone: 905.827.6400
Toll Free: 855.668.8722
Fax: 905.827.6402
canada.inquires@bio-techne.com

Bio-Techne Ltd

19 Barton Lane
Abingdon Science Park
Abingdon, OX14 3NB, United Kingdom
Phone: (44) (0) 1235 529449
Free Phone: 0800 37 34 15
Fax: (44) (0) 1235 533420
info.EMEA@bio-techne.com

General Contact Information

www.novusbio.com
Technical Support: technical@novusbio.com
Orders: orders@novusbio.com
General: novus@novusbio.com

Limitations

This product is for research use only and is not approved for use in humans or in clinical diagnosis. Primary Antibodies are guaranteed for 1 year from date of receipt.

For more information on our 100% guarantee, please visit www.novusbio.com/guarantee

Earn gift cards/discounts by submitting a review: www.novusbio.com/reviews/submit/H00006833-M01

Earn gift cards/discounts by submitting a publication using this product:
www.novusbio.com/publications

