

Product Datasheet

Sorbitol Dehydrogenase Antibody (4D3) H00006652-M01

Unit Size: 0.1 mg

Aliquot and store at -20C or -80C. Avoid freeze-thaw cycles.

www.novusbio.com



technical@novusbio.com

Publications: 1

Protocols, Publications, Related Products, Reviews, Research Tools and Images at:
www.novusbio.com/H00006652-M01

Updated 6/27/2023 v.20.1

Earn rewards for product
reviews and publications.

Submit a publication at www.novusbio.com/publications

Submit a review at www.novusbio.com/reviews/destination/H00006652-M01



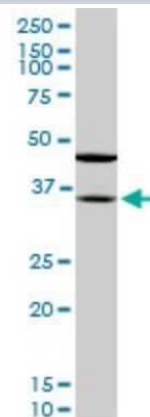
H00006652-M01**Sorbitol Dehydrogenase Antibody (4D3)**

Product Information	
Unit Size	0.1 mg
Concentration	This product is unpurified. The exact concentration of antibody is not quantifiable.
Storage	Aliquot and store at -20C or -80C. Avoid freeze-thaw cycles.
Clonality	Monoclonal
Clone	4D3
Preservative	No Preservative
Isotype	IgG1 Kappa
Purity	Ascites
Buffer	In 1x PBS, pH 7.4
Product Description	
Description	Quality control test: Antibody Reactive Against Recombinant Protein.
Host	Mouse
Gene ID	6652
Gene Symbol	SORD
Species	Human, Mouse, Rat
Reactivity Notes	Please note that this antibody is reactive to Mouse and derived from the same host, Mouse. Additional Mouse on Mouse blocking steps may be required for IHC and ICC experiments. Please contact Technical Support for more information.
Specificity/Sensitivity	SORD - sorbitol dehydrogenase
Immunogen	SORD (NP_003095, 1 a.a. ~ 110 a.a) partial recombinant protein with GST tag. MW of the GST tag alone is 26 KDa. MAAAAKPNNLSLVVHGPGDLRLNYPEPGPNEVLLRMHSGVIGCGSDVHYWEYGRIGNFIVKKPMVLGHEASGTVEKVGSSVKHLKPGDRVAIEPGAPRENDEFCKMGR
Notes	This product is produced by and distributed for Abnova, a company based in Taiwan.
Product Application Details	
Applications	Western Blot, ELISA, Immunohistochemistry, Immunohistochemistry-Paraffin
Recommended Dilutions	Western Blot, ELISA, Immunohistochemistry, Immunohistochemistry-Paraffin
Application Notes	Antibody reactivity against cell lysate, transfected lysate and recombinant protein for WB. It has been used for ELISA.

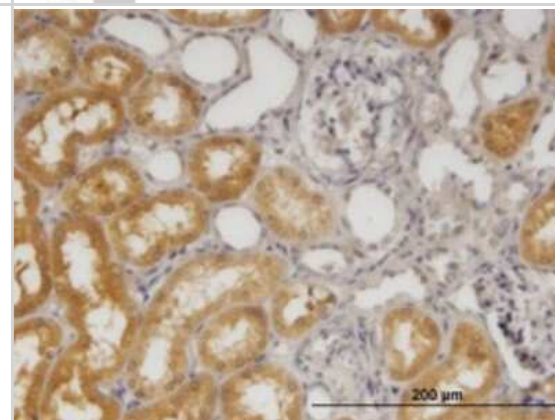


Images

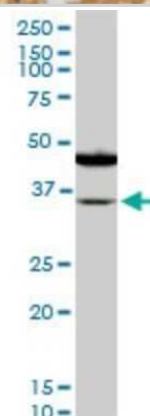
Western Blot: Sorbitol Dehydrogenase Antibody (4D3) [H00006652-M01]
- SORD monoclonal antibody (M01), clone 4D3. Analysis of SORD expression in NIH/3T3.



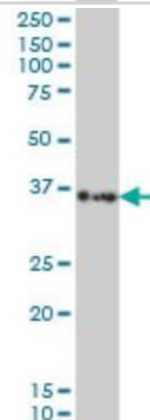
Immunohistochemistry-Paraffin: Sorbitol Dehydrogenase Antibody (4D3) [H00006652-M01] - Analysis of monoclonal antibody to SORD on formalin-fixed paraffin-embedded human kidney. Antibody concentration 1.2 ug/ml.



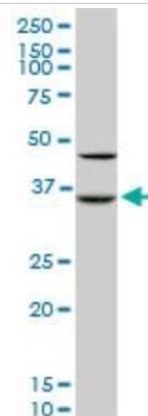
Western Blot: Sorbitol Dehydrogenase Antibody (4D3) [H00006652-M01]
- SORD monoclonal antibody (M01), clone 4D3. Analysis of SORD expression in PC-12.



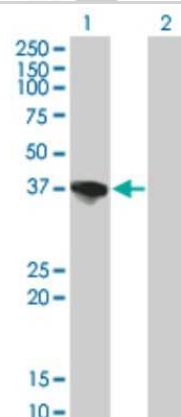
Western Blot: Sorbitol Dehydrogenase Antibody (4D3) [H00006652-M01]
- SORD monoclonal antibody (M01), clone 4D3. Analysis of SORD expression in Hela S3 NE.



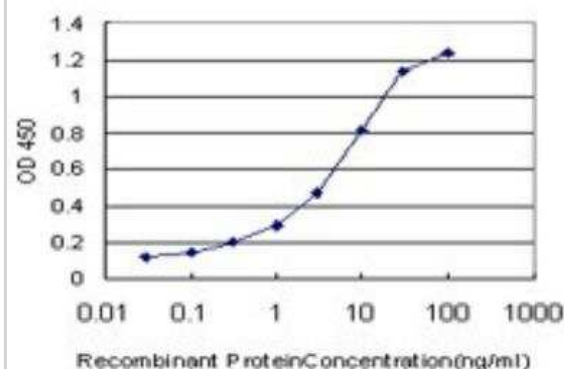
Western Blot: Sorbitol Dehydrogenase Antibody (4D3) [H00006652-M01]
- SORD monoclonal antibody (M01), clone 4D3. Analysis of SORD expression in Raw 264.7.



Western Blot: Sorbitol Dehydrogenase Antibody (4D3) [H00006652-M01]
- Analysis of SORD expression in transfected 293T cell line by SORD monoclonal antibody (M01), clone 4D3. Lane 1: SORD transfected lysate (38.165 kDa). Lane 2: Non-transfected lysate.



ELISA: Sorbitol Dehydrogenase Antibody (4D3) [H00006652-M01] -
Detection limit for recombinant GST tagged SORD is approximately 0.1 ng/ml as a capture antibody.



Publications

Szabo Z, Hamalainen J, Loikkanen I et al. Sorbitol dehydrogenase expression is regulated by androgens in the human prostate. *Oncol Rep* 23(5):1233-9. 2010-05-01 [PMID: 20372835]



Novus Biologicals USA

10730 E. Briarwood Avenue
Centennial, CO 80112
USA
Phone: 303.730.1950
Toll Free: 1.888.506.6887
Fax: 303.730.1966
novus@novusbio.com

Bio-Techne Canada

21 Canmotor Ave
Toronto, ON M8Z 4E6
Canada
Phone: 905.827.6400
Toll Free: 855.668.8722
Fax: 905.827.6402
canada.inquires@bio-techne.com

Bio-Techne Ltd

19 Barton Lane
Abingdon Science Park
Abingdon, OX14 3NB, United Kingdom
Phone: (44) (0) 1235 529449
Free Phone: 0800 37 34 15
Fax: (44) (0) 1235 533420
info.EMEA@bio-techne.com

General Contact Information

www.novusbio.com
Technical Support: technical@novusbio.com
Orders: orders@novusbio.com
General: novus@novusbio.com

Limitations

This product is for research use only and is not approved for use in humans or in clinical diagnosis. Primary Antibodies are guaranteed for 1 year from date of receipt.

For more information on our 100% guarantee, please visit www.novusbio.com/guarantee

Earn gift cards/discounts by submitting a review: www.novusbio.com/reviews/submit/H00006652-M01

Earn gift cards/discounts by submitting a publication using this product:
www.novusbio.com/publications

