

Product Datasheet

Spermine synthase Antibody (1G6) - Azide and BSA Free H00006611-M01

Unit Size: 0.1 mg

Aliquot and store at -20C or -80C. Avoid freeze-thaw cycles.

www.novusbio.com



technical@novusbio.com

Publications: 3

Protocols, Publications, Related Products, Reviews, Research Tools and Images at:
www.novusbio.com/H00006611-M01

Updated 2/21/2025 v.20.1

Earn rewards for product
reviews and publications.

Submit a publication at www.novusbio.com/publications

Submit a review at www.novusbio.com/reviews/destination/H00006611-M01



H00006611-M01

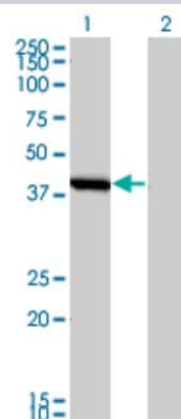
Spermine synthase Antibody (1G6) - Azide and BSA Free

Product Information	
Unit Size	0.1 mg
Concentration	Concentrations vary lot to lot. See vial label for concentration. If unlisted please contact technical services.
Storage	Aliquot and store at -20C or -80C. Avoid freeze-thaw cycles.
Clonality	Monoclonal
Clone	1G6
Preservative	No Preservative
Isotype	IgG2a Kappa
Purity	IgG purified
Buffer	In 1x PBS, pH 7.4
Product Description	
Description	Quality control test: Antibody Reactive Against Recombinant Protein.
Host	Mouse
Gene ID	6611
Gene Symbol	SMS
Species	Human
Specificity/Sensitivity	SMS - spermine synthase
Immunogen	SMS (AAH09898.1, 1 a.a. ~ 366 a.a) full-length recombinant protein with GST tag. MW of the GST tag alone is 26 KDa. MAAARHSTLDFMLGAKADGETILKGLQSIFQEQQMAESVHTWQDHGYLATYTN KNGSFANLRIYPHGLVLLDLQSYDGDAQGKEEIDSILNKVEERMKELSQDSTGR VKRLPPIVRGG AIDRYWPTADGRLVEYDIDEVVYDEDESPYQNIKILHSKQFGNILI LSGDVNLAESDLAYTRAIMGSGKEDYTGKDV LILGGDG GILCEIVKLKPKMVT MVEIDQMVIDGCKKYMRTCGDVLN LKGD CYQVLI EDCIPVLKRYAKEGREF DYVINDLTAVPISTSP EEDSTW EFLRLILDLSMKVLKQDGKYFTQGNCVNLTEAL SLYEEQLGRLYCPVEFSKEIVCVPSYLELWVFYTVWKKAKP
Notes	This product is produced by and distributed for Abnova, a company based in Taiwan.
Product Application Details	
Applications	Western Blot, ELISA
Recommended Dilutions	Western Blot, ELISA
Application Notes	Antibody reactivity against transfected lysate and recombinant protein for WB. It has been used for ELISA.

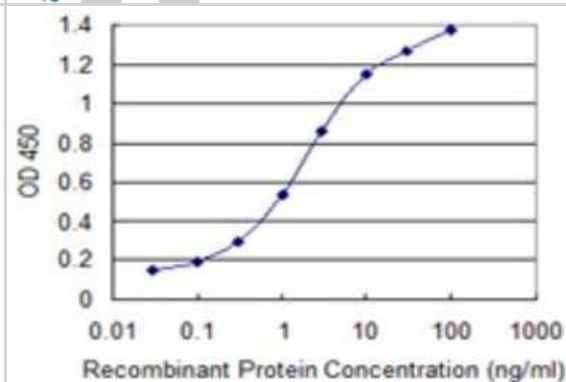


Images

Western Blot: Spermine synthase Antibody (1G6) [H00006611-M01] - Analysis of SMS expression in transfected 293T cell line by SMS monoclonal antibody (M01), clone 1G6. Lane 1: SMS transfected lysate (41.268 KDa). Lane 2: Non-transfected lysate.



ELISA: Spermine synthase Antibody (1G6) [H00006611-M01] - Detection limit for recombinant GST tagged SMS is 0.03 ng/ml as a capture antibody.



Publications

AL Ramsay, V Alonso-Gar, C Chaboya, B Radut, B Le, J Florez, C Schumacher, FA Fierro Modeling Snyder-Robinson Syndrome in multipotent stromal cells reveals impaired mitochondrial function as a potential cause for deficient osteogenesis *Sci Rep*, 2019-10-28;9(1):15395. 2019-10-28 [PMID: 31659216]

Peng Y, Norris J, Schwartz C, Alexov E Revealing the Effects of Missense Mutations Causing Snyder-Robinson Syndrome on the Stability and Dimerization of Spermine Synthase. *Int J Mol Sci* 2016-01-08 [PMID: 26761001] (WB)

Zhang Z, Norris J, Kalscheuer V et al. A Y328C missense mutation in spermine synthase causes a mild form of Snyder-Robinson syndrome. *Hum Mol Genet*. 2013-05-31 [PMID: 23696453]



Novus Biologicals USA

10730 E. Briarwood Avenue
Centennial, CO 80112
USA
Phone: 303.730.1950
Toll Free: 1.888.506.6887
Fax: 303.730.1966
nb-customerservice@bio-techne.com

Bio-Techne Canada

21 Canmotor Ave
Toronto, ON M8Z 4E6
Canada
Phone: 905.827.6400
Toll Free: 855.668.8722
Fax: 905.827.6402
canada.inquires@bio-techne.com

Bio-Techne Ltd

19 Barton Lane
Abingdon Science Park
Abingdon, OX14 3NB, United Kingdom
Phone: (44) (0) 1235 529449
Free Phone: 0800 37 34 15
Fax: (44) (0) 1235 533420
info.EMEA@bio-techne.com

General Contact Information

www.novusbio.com
Technical Support: nb-technical@bio-techne.com
Orders: nb-customerservice@bio-techne.com
General: novus@novusbio.com

Products Related to H00006611-M01

HAF007	Goat anti-Mouse IgG Secondary Antibody [HRP]
NB720-B	Rabbit anti-Mouse IgG (H+L) Secondary Antibody [Biotin]
NBP1-96981-0.5mg	Mouse IgG2a Kappa Isotype Control (M2AK)
NBP1-78857-50ug	Recombinant Human Spermine synthase His Protein

Limitations

This product is for research use only and is not approved for use in humans or in clinical diagnosis. Primary Antibodies are guaranteed for 1 year from date of receipt.

For more information on our 100% guarantee, please visit www.novusbio.com/guarantee

Earn gift cards/discounts by submitting a review: www.novusbio.com/reviews/submit/H00006611-M01

Earn gift cards/discounts by submitting a publication using this product:
www.novusbio.com/publications

