

Product Datasheet

NRAMP1/SLC11A1 Antibody (2G2) - Azide and BSA Free H00006556-M01

Unit Size: 0.1 mg

Aliquot and store at -20C or -80C. Avoid freeze-thaw cycles.

www.novusbio.com



technical@novusbio.com

Publications: 2

Protocols, Publications, Related Products, Reviews, Research Tools and Images at:
www.novusbio.com/H00006556-M01

Updated 2/21/2025 v.20.1

Earn rewards for product
reviews and publications.

Submit a publication at www.novusbio.com/publications

Submit a review at www.novusbio.com/reviews/destination/H00006556-M01



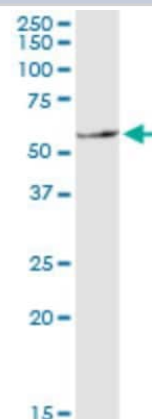
H00006556-M01**NRAMP1/SLC11A1 Antibody (2G2) - Azide and BSA Free**

Product Information	
Unit Size	0.1 mg
Concentration	Concentrations vary lot to lot. See vial label for concentration. If unlisted please contact technical services.
Storage	Aliquot and store at -20C or -80C. Avoid freeze-thaw cycles.
Clonality	Monoclonal
Clone	2G2
Preservative	No Preservative
Isotype	IgG1 Kappa
Purity	IgG purified
Buffer	In 1x PBS, pH 7.4
Product Description	
Description	Quality control test: Antibody Reactive Against Recombinant Protein.
Host	Mouse
Gene ID	6556
Gene Symbol	SLC11A1
Species	Human, Mouse, Bovine
Reactivity Notes	Mouse reactivity reported in scientific literature (PMID: 23191958).
Specificity/Sensitivity	SLC11A1 - solute carrier family 11 (proton-coupled divalent metal ion transporters), member 1
Immunogen	SLC11A1 (NP_000569.2, 308 a.a. ~ 350 a.a) partial recombinant protein with GST tag. MW of the GST tag alone is 26 KDa. QAFYQKTNQAAFNICANSSLHDYAKIFPMNNATVAVDIYQGGV
Notes	This product is produced by and distributed for Abnova, a company based in Taiwan.
Product Application Details	
Applications	Western Blot, ELISA
Recommended Dilutions	Western Blot, ELISA
Application Notes	Antibody reactivity against Recombinant Protein with GST tag on ELISA and WB. GST tag alone is used as a negative control.

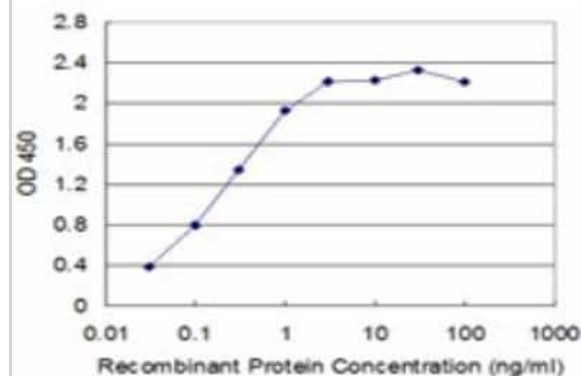


Images

Western Blot: NRAMP1/SLC11A1 Antibody (2G2) [H00006556-M01] - SLC11A1 monoclonal antibody (M01), clone 2G2. Analysis of SLC11A1 expression in human liver.



ELISA: NRAMP1/SLC11A1 Antibody (2G2) [H00006556-M01] - Detection limit for recombinant GST tagged SLC11A1 is approximately 0.03ng/ml as a capture antibody.



Publications

Hedges JF, Kimmel E, Snyder DT et al. Solute Carrier 11A1 Is Expressed by Innate Lymphocytes and Augments Their Activation. J Immunol. 2013-03-18 [PMID: 23509347]

Guo TZ, Wei T, Shi X et al. Neuropeptide deficient mice have attenuated nociceptive, vascular, and inflammatory changes in a tibia fracture model of complex regional pain syndrome Mol Pain 2012 Nov 28 [PMID: 23191958] (WB, Mouse)

**Novus Biologicals USA**

10730 E. Briarwood Avenue
Centennial, CO 80112
USA
Phone: 303.730.1950
Toll Free: 1.888.506.6887
Fax: 303.730.1966
nb-customerservice@bio-techne.com

Bio-Techne Canada

21 Canmotor Ave
Toronto, ON M8Z 4E6
Canada
Phone: 905.827.6400
Toll Free: 855.668.8722
Fax: 905.827.6402
canada.inquires@bio-techne.com

Bio-Techne Ltd

19 Barton Lane
Abingdon Science Park
Abingdon, OX14 3NB, United Kingdom
Phone: (44) (0) 1235 529449
Free Phone: 0800 37 34 15
Fax: (44) (0) 1235 533420
info.EMEA@bio-techne.com

General Contact Information

www.novusbio.com
Technical Support: nb-technical@bio-techne.com
Orders: nb-customerservice@bio-techne.com
General: novus@novusbio.com

Products Related to H00006556-M01

HAF007	Goat anti-Mouse IgG Secondary Antibody [HRP]
NB720-B	Rabbit anti-Mouse IgG (H+L) Secondary Antibody [Biotin]
NBP1-43319-0.5mg	Mouse IgG1 Kappa Isotype Control (P3.6.2.8.1)
H00006556-Q01-10ug	Recombinant Human NRAMP1/SLC11A1 GST (N-Term) Protein

Limitations

This product is for research use only and is not approved for use in humans or in clinical diagnosis. Primary Antibodies are guaranteed for 1 year from date of receipt.

For more information on our 100% guarantee, please visit www.novusbio.com/guarantee

Earn gift cards/discounts by submitting a review: www.novusbio.com/reviews/submit/H00006556-M01

Earn gift cards/discounts by submitting a publication using this product:
www.novusbio.com/publications

