

Product Datasheet

RPL23A Antibody (3E11) - Azide and BSA Free H00006147-M10

Unit Size: 0.1 mg

Aliquot and store at -20C or -80C. Avoid freeze-thaw cycles.

www.novusbio.com



technical@novusbio.com

Protocols, Publications, Related Products, Reviews, Research Tools and Images at:
www.novusbio.com/H00006147-M10

Updated 2/21/2025 v.20.1

Earn rewards for product
reviews and publications.

Submit a publication at www.novusbio.com/publications

Submit a review at www.novusbio.com/reviews/destination/H00006147-M10



H00006147-M10

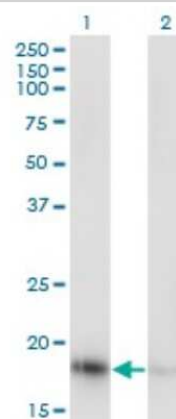
RPL23A Antibody (3E11) - Azide and BSA Free

Product Information	
Unit Size	0.1 mg
Concentration	Concentrations vary lot to lot. See vial label for concentration. If unlisted please contact technical services.
Storage	Aliquot and store at -20C or -80C. Avoid freeze-thaw cycles.
Clonality	Monoclonal
Clone	3E11
Preservative	No Preservative
Isotype	IgG2a Kappa
Purity	Protein A purified
Buffer	In 1x PBS, pH 7.4
Product Description	
Description	Quality control test: Antibody Reactive Against Recombinant Protein.
Host	Mouse
Gene ID	6147
Gene Symbol	RPL23A
Species	Human
Specificity/Sensitivity	Reacts with ribosomal protein L23a.
Immunogen	RPL23A (NP_000975.2, 59 a.a. ~ 156 a.a) partial recombinant protein with GST tag. MW of the GST tag alone is 26 KDa. KYPRKSAPRRNKLDHYAIIKFPLTTESAMKKIEDNNTLVFIVDVKANKHQIKQAVK KLYDIDVAKVNTLIRPDGEKKAYVRLAPDYDALDVANKIGII
Notes	This product is produced by and distributed for Abnova, a company based in Taiwan.
Product Application Details	
Applications	Western Blot, ELISA, Immunocytochemistry/ Immunofluorescence
Recommended Dilutions	Western Blot, ELISA, Immunocytochemistry/ Immunofluorescence
Application Notes	This antibody is reactive against recombinant protein in WB and ELISA.

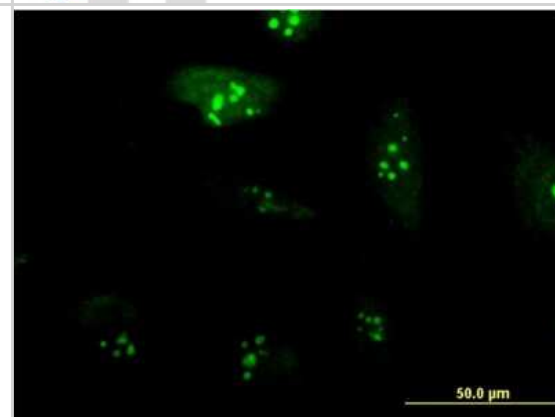


Images

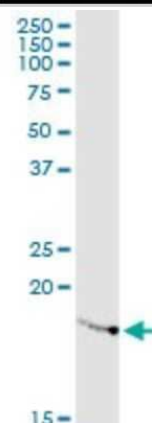
Western Blot: RPL23A Antibody (3E11) [H00006147-M10] - Analysis of RPL23A expression in transfected 293T cell line by RPL23A monoclonal antibody (M10), clone 3E11. Lane 1: RPL23A transfected lysate (17.7 KDa). Lane 2: Non-transfected lysate.



Immunocytochemistry/Immunofluorescence: RPL23A Antibody (3E11) [H00006147-M10] - Analysis of monoclonal antibody to RPL23A on HeLa cell. Antibody concentration 10 ug/ml



Western Blot: RPL23A Antibody (3E11) [H00006147-M10] - Analysis of RPL23A expression in HeLa.





Novus Biologicals USA

10730 E. Briarwood Avenue
Centennial, CO 80112
USA
Phone: 303.730.1950
Toll Free: 1.888.506.6887
Fax: 303.730.1966
nb-customerservice@bio-techne.com

Bio-Techne Canada

21 Canmotor Ave
Toronto, ON M8Z 4E6
Canada
Phone: 905.827.6400
Toll Free: 855.668.8722
Fax: 905.827.6402
canada.inquires@bio-techne.com

Bio-Techne Ltd

19 Barton Lane
Abingdon Science Park
Abingdon, OX14 3NB, United Kingdom
Phone: (44) (0) 1235 529449
Free Phone: 0800 37 34 15
Fax: (44) (0) 1235 533420
info.EMEA@bio-techne.com

General Contact Information

www.novusbio.com
Technical Support: nb-technical@bio-techne.com
Orders: nb-customerservice@bio-techne.com
General: novus@novusbio.com

Products Related to H00006147-M10

HAF007	Goat anti-Mouse IgG Secondary Antibody [HRP]
NB720-B	Rabbit anti-Mouse IgG (H+L) Secondary Antibody [Biotin]
NBP1-96981-0.5mg	Mouse IgG2a Kappa Isotype Control (M2AK)
NBP2-23420	Recombinant Human RPL23A His Protein

Limitations

This product is for research use only and is not approved for use in humans or in clinical diagnosis. Primary Antibodies are guaranteed for 1 year from date of receipt.

For more information on our 100% guarantee, please visit www.novusbio.com/guarantee

Earn gift cards/discounts by submitting a review: www.novusbio.com/reviews/submit/H00006147-M10

Earn gift cards/discounts by submitting a publication using this product:
www.novusbio.com/publications

