

Product Datasheet

SHP-1 Antibody Pair H00005777-AP22

Unit Size: 1 Set

Aliquot and store at -20C or -80C. Avoid freeze-thaw cycles.

www.novusbio.com



technical@novusbio.com

Protocols, Publications, Related Products, Reviews, Research Tools and Images at:
www.novusbio.com/H00005777-AP22

Updated 4/16/2024 v.20.1

Earn rewards for product
reviews and publications.

Submit a publication at www.novusbio.com/publications

Submit a review at www.novusbio.com/reviews/destination/H00005777-AP22



H00005777-AP22**SHP-1 Antibody Pair****Product Information**

Unit Size	1 Set
Concentration	Concentration of individual antibodies may be found on the vial label. If unlisted please contact technical services.
Storage	Aliquot and store at -20C or -80C. Avoid freeze-thaw cycles.
Buffer	1x PBS, pH 7.4

Product Description

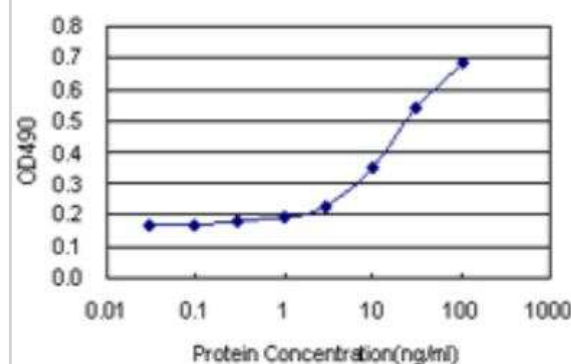
Description	Quality control test: Standard curve using recombinant protein (H00005777-P01) as an analyte. This antibody pair set comes with matched antibody pair to detect and quantify protein level of human PTPN6.
Gene Symbol	PTPN6
Species	Human
Kit Components	Capture antibody: rabbit MaxPab affinity purified polyclonal anti-PTPN6 (100 ug), Detection antibody: mouse purified polyclonal anti-PTPN6 (20 ug)
Notes	This product is produced by and distributed for Abnova, a company based in Taiwan.
Standard Curve Range	1 ng/ml to 100 ng/ml
Assay Type	Sandwich ELISA

Product Application Details

Applications	Sandwich ELISA
Recommended Dilutions	Sandwich ELISA 1 ng/ml - 100 ng/ml
Application Notes	Reagents are sufficient for at least 1-2 x 96 well plates using recommended protocols.

Images

Sandwich ELISA: PTPN6 Antibody Pair [H00005777-AP22] - Detection sensitivity ranging from 1 ng/ml to 100 ng/ml.





Novus Biologicals USA

10730 E. Briarwood Avenue
Centennial, CO 80112
USA
Phone: 303.730.1950
Toll Free: 1.888.506.6887
Fax: 303.730.1966
nb-customerservice@bio-techne.com

Bio-Techne Canada

21 Canmotor Ave
Toronto, ON M8Z 4E6
Canada
Phone: 905.827.6400
Toll Free: 855.668.8722
Fax: 905.827.6402
canada.inquires@bio-techne.com

Bio-Techne Ltd

19 Barton Lane
Abingdon Science Park
Abingdon, OX14 3NB, United Kingdom
Phone: (44) (0) 1235 529449
Free Phone: 0800 37 34 15
Fax: (44) (0) 1235 533420
info.EMEA@bio-techne.com

General Contact Information

www.novusbio.com
Technical Support: nb-technical@bio-techne.com
Orders: nb-customerservice@bio-techne.com
General: novus@novusbio.com

Products Related to H00005777-AP22

NBP1-83276PEP	SHP-1 Recombinant Protein Antigen
NBP3-15669-100ul	SHP-1 Antibody (7I1K3)

Limitations

This product is for research use only and is not approved for use in humans or in clinical diagnosis. Antibody Pairs are guaranteed for 6 months from date of receipt.

For more information on our 100% guarantee, please visit www.novusbio.com/guarantee

Earn gift cards/discounts by submitting a review: www.novusbio.com/reviews/submit/H00005777-AP22

Earn gift cards/discounts by submitting a publication using this product:
www.novusbio.com/publications

