

# Product Datasheet

## PP2C beta/PPM1B Antibody (1A3-2A4) - Azide and BSA Free H00005495-M01

Unit Size: 0.1 mg

Aliquot and store at -20C or -80C. Avoid freeze-thaw cycles.

[www.novusbio.com](http://www.novusbio.com)



[technical@novusbio.com](mailto:technical@novusbio.com)

### Publications: 1

Protocols, Publications, Related Products, Reviews, Research Tools and Images at:  
[www.novusbio.com/H00005495-M01](http://www.novusbio.com/H00005495-M01)

Updated 2/21/2025 v.20.1

Earn rewards for product reviews and publications.

Submit a publication at [www.novusbio.com/publications](http://www.novusbio.com/publications)

Submit a review at [www.novusbio.com/reviews/destination/H00005495-M01](http://www.novusbio.com/reviews/destination/H00005495-M01)



**H00005495-M01**

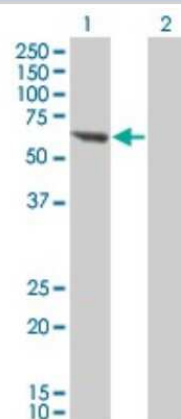
PP2C beta/PPM1B Antibody (1A3-2A4) - Azide and BSA Free

Product Information	
Unit Size	0.1 mg
Concentration	Concentrations vary lot to lot. See vial label for concentration. If unlisted please contact technical services.
Storage	Aliquot and store at -20C or -80C. Avoid freeze-thaw cycles.
Clonality	Monoclonal
Clone	1A3-2A4
Preservative	No Preservative
Isotype	IgG1 Kappa
Purity	IgG purified
Buffer	In 1x PBS, pH 7.4
Product Description	
Description	Quality control test: Antibody Reactive Against Recombinant Protein.
Host	Mouse
Gene ID	5495
Gene Symbol	PPM1B
Species	Human
Specificity/Sensitivity	PPM1B - protein phosphatase 1B (formerly 2C), magnesium-dependent, beta isoform
Immunogen	PPM1B (AAH12002, 1 a.a. ~ 192 a.a) full-length recombinant protein with GST tag. MW of the GST tag alone is 26 KDa. MSIVLVCFSNAPKVSDEAVKKDSELDKHLESRVVEIMEKSGEEGMPDLAHVMRI LSAENIPNLPPGGGLAGKRNVIEAVYSRLNPHRES DGASDEAEESGSQGKLVE ALRQMRINHRGN YRQLLEMLTSYRLAKVEGEESPAEPAATATSSNSDAGNPV TMQESHTESESGLAELDSSNEDAGTKMSGEKI
Notes	This product is produced by and distributed for Abnova, a company based in Taiwan.
Product Application Details	
Applications	Western Blot, ELISA, Immunocytochemistry/ Immunofluorescence, Immunoprecipitation, Proximity Ligation Assay, Knockdown Validated
Recommended Dilutions	Western Blot 1:500, ELISA, Immunocytochemistry/ Immunofluorescence 1:10-1:500, Immunoprecipitation 1:10-1:500, Proximity Ligation Assay, Knockdown Validated
Application Notes	Antibody reactivity against recombinant protein and transfected lysate for WB. It has also been used for IF, RNAi Validation and ELISA.

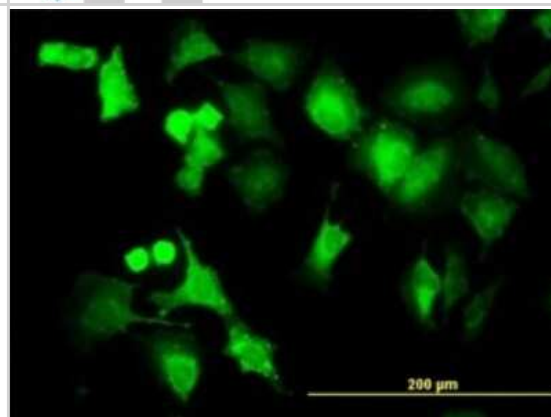


## Images

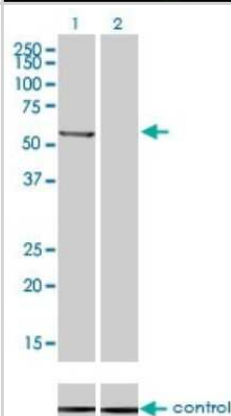
Western Blot: PP2C beta/PPM1B Antibody (1A3-2A4) [H00005495-M01]  
- Analysis of PPM1B expression in transfected 293T cell line by PPM1B monoclonal antibody (M01), clone 1A3-2A4. Lane 1: PPM1B transfected lysate (52.643 KDa). Lane 2: Non-transfected lysate.



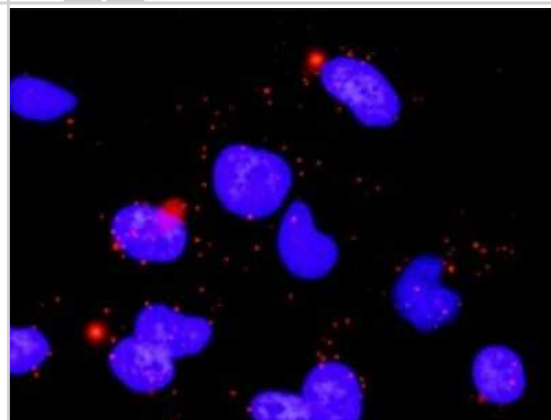
Immunocytochemistry/Immunofluorescence: PP2C beta/PPM1B Antibody (1A3-2A4) [H00005495-M01] - Analysis of monoclonal antibody to PPM1B on HeLa cell. Antibody concentration 10 ug/ml.



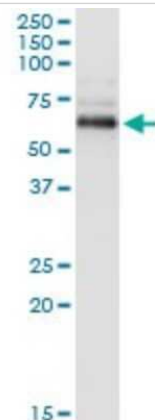
Western Blot: PP2C beta/PPM1B Antibody (1A3-2A4) [H00005495-M01]  
- Analysis of PPM1B over-expressed 293 cell line, cotransfected with PPM1B Validated Chimera RNAi ( Cat # H00005495-R01V ) (Lane 2) or non-transfected control (Lane 1). Blot probed with PPM1B monoclonal antibody (M01), clone 1A3-2A4 (Cat # H00005495-M01 ). GAPDH ( 36.1 kDa ) used as specificity and loading control.



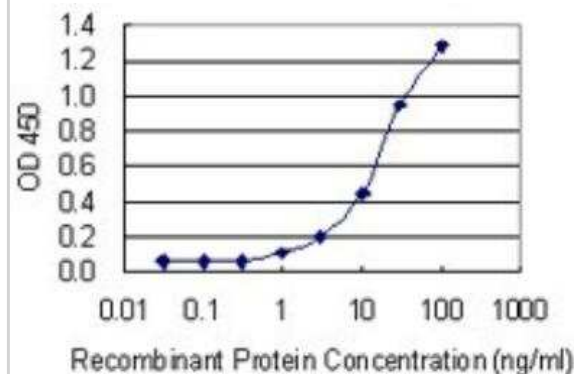
Proximity Ligation Assay: PP2C beta/PPM1B Antibody (1A3-2A4) [H00005495-M01] - Analysis of protein-protein interactions between ARRB2 and PPM1B. HeLa cells were stained with anti-ARRB2 rabbit purified polyclonal 1:1200 and anti-PPM1B mouse monoclonal antibody 1:50. Each red dot represents the detection of protein-protein interaction complex, and nuclei were counterstained with DAPI (blue).



Immunoprecipitation: PP2C beta/PPM1B Antibody (1A3-2A4) [H00005495-M01] - Analysis of PPM1B transfected lysate using anti-PPM1B monoclonal antibody and Protein A Magnetic Bead, and immunoblotted with PPM1B monoclonal antibody.



ELISA: PP2C beta/PPM1B Antibody (1A3-2A4) [H00005495-M01] - Detection limit for recombinant GST tagged PPM1B is 0.3 ng/ml as a capture antibody.



## Publications

Sambuceti G, Morbelli S, Vanella L et al. Diabetes impairs the vascular recruitment of normal stem cells by oxidant damage, reversed by increases in pAMPK, heme oxygenase-1, and adiponectin. Stem Cells 2009-02-01 [PMID: 20462248] (IP, WB, Human)



### **Novus Biologicals USA**

10730 E. Briarwood Avenue  
Centennial, CO 80112  
USA  
Phone: 303.730.1950  
Toll Free: 1.888.506.6887  
Fax: 303.730.1966  
nb-customerservice@bio-techne.com

### **Bio-Techne Canada**

21 Canmotor Ave  
Toronto, ON M8Z 4E6  
Canada  
Phone: 905.827.6400  
Toll Free: 855.668.8722  
Fax: 905.827.6402  
canada.inquires@bio-techne.com

### **Bio-Techne Ltd**

19 Barton Lane  
Abingdon Science Park  
Abingdon, OX14 3NB, United Kingdom  
Phone: (44) (0) 1235 529449  
Free Phone: 0800 37 34 15  
Fax: (44) (0) 1235 533420  
info.EMEA@bio-techne.com

### **General Contact Information**

www.novusbio.com  
Technical Support: nb-technical@bio-techne.com  
Orders: nb-customerservice@bio-techne.com  
General: novus@novusbio.com

### **Products Related to H00005495-M01**

HAF007	Goat anti-Mouse IgG Secondary Antibody [HRP]
NB720-B	Rabbit anti-Mouse IgG (H+L) Secondary Antibody [Biotin]
NBP1-43319-0.5mg	Mouse IgG1 Kappa Isotype Control (P3.6.2.8.1)
H00005495-P01-10ug	Recombinant Human PP2C beta/PPM1B GST (N-Term) Protein

### **Limitations**

This product is for research use only and is not approved for use in humans or in clinical diagnosis. Primary Antibodies are guaranteed for 1 year from date of receipt.

For more information on our 100% guarantee, please visit [www.novusbio.com/guarantee](http://www.novusbio.com/guarantee)

Earn gift cards/discounts by submitting a review: [www.novusbio.com/reviews/submit/H00005495-M01](http://www.novusbio.com/reviews/submit/H00005495-M01)

Earn gift cards/discounts by submitting a publication using this product:  
[www.novusbio.com/publications](http://www.novusbio.com/publications)

