

# Product Datasheet

## PP2C alpha/PPM1A Antibody (4E11) - Azide and BSA Free H00005494-M03

Unit Size: 0.1 mg

Aliquot and store at -20C or -80C. Avoid freeze-thaw cycles.

[www.novusbio.com](http://www.novusbio.com)



[technical@novusbio.com](mailto:technical@novusbio.com)

### Publications: 1

Protocols, Publications, Related Products, Reviews, Research Tools and Images at:  
[www.novusbio.com/H00005494-M03](http://www.novusbio.com/H00005494-M03)

Updated 2/21/2025 v.20.1

Earn rewards for product  
reviews and publications.

Submit a publication at [www.novusbio.com/publications](http://www.novusbio.com/publications)

Submit a review at [www.novusbio.com/reviews/destination/H00005494-M03](http://www.novusbio.com/reviews/destination/H00005494-M03)



**H00005494-M03**

PP2C alpha/PPM1A Antibody (4E11) - Azide and BSA Free

Product Information	
Unit Size	0.1 mg
Concentration	Concentrations vary lot to lot. See vial label for concentration. If unlisted please contact technical services.
Storage	Aliquot and store at -20C or -80C. Avoid freeze-thaw cycles.
Clonality	Monoclonal
Clone	4E11
Preservative	No Preservative
Isotype	IgG2a Kappa
Purity	IgG purified
Buffer	In 1x PBS, pH 7.4
Product Description	
Description	Quality control test: Antibody Reactive Against Recombinant Protein.
Host	Mouse
Gene ID	5494
Gene Symbol	PPM1A
Species	Human
Specificity/Sensitivity	PPM1A - protein phosphatase 1A (formerly 2C), magnesium-dependent, alpha isoform (4E11)
Immunogen	PPM1A (AAH26691, 1 a.a. ~ 382 a.a) full-length recombinant protein with GST tag. MW of the GST tag alone is 26 KDa. MGAFLDKPKMEKHNAQQQGNGRLRYGLSSMQGWRVEMEDAHTAVIGLPSGLE SWSFFAVYDGHAGSQVAKYCCEHLLDHITNNQDFKGSAGAPSVENVKNGIRT GFLEIDEHMRVMSEKKHGADRSGSTAVGVLI SPQHTYFINC GDSRGLLCRNRK VHFFTQDHPKSPNPLEKERIQNAGGSVMQIRVNGSLAVSRALGDFDYKCVHGK GPTEQLVSPEPEVHDIERSEEDDQFIILACDGIWDVVMGNEELCDFVRSRLEVTD DLEKVCNEVVDTCLYKGSRDNMSVILICFPNAPKVSPEAVKKEAELDKYLECRV EEIIKKQGEGVPDLVHVMRTLASENIPSLPPGGELASKRNVIEAVYNRLNPYKN DDTDSTSTDDMW
Notes	This product is produced by and distributed for Abnova, a company based in Taiwan.
Product Application Details	
Applications	Western Blot, ELISA, Immunocytochemistry/ Immunofluorescence, Immunohistochemistry, Immunohistochemistry-Paraffin, Proximity Ligation Assay, Sandwich ELISA
Recommended Dilutions	Western Blot 1:500, ELISA, Immunohistochemistry, Immunocytochemistry/ Immunofluorescence, Immunohistochemistry-Paraffin, Proximity Ligation Assay, Sandwich ELISA
Application Notes	Antibody reactivity against Recombinant Protein with GST tag on ELISA and WB. GST tag alone is used as a negative control.

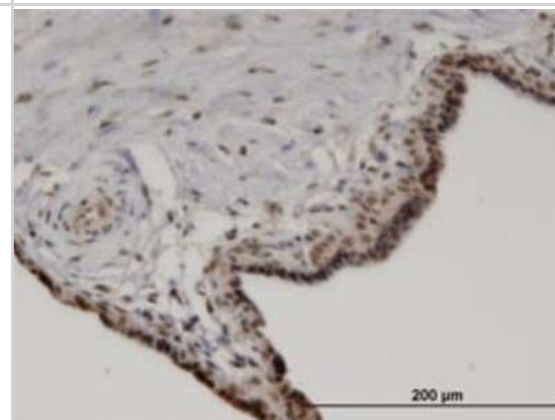


## Images

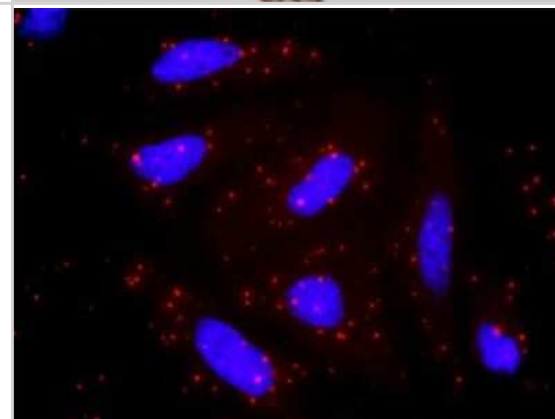
Immunocytochemistry/Immunofluorescence: PP2C alpha/PPM1A Antibody (4E11) [H00005494-M03] - Analysis of monoclonal antibody to PPM1A on HeLa cell. Antibody concentration 10 ug/ml



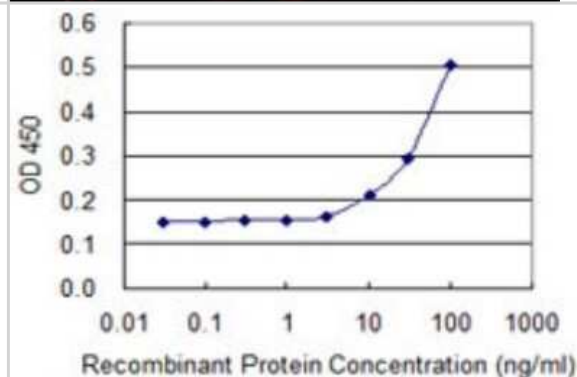
Immunohistochemistry-Paraffin: PP2C alpha/PPM1A Antibody (4E11) [H00005494-M03] - Analysis of monoclonal antibody to PPM1A on formalin-fixed paraffin-embedded human placenta. Antibody concentration 3 ug/ml



Proximity Ligation Assay: PP2C alpha/PPM1A Antibody (4E11) [H00005494-M03] - Analysis of protein-protein interactions between AKT1 and PPM1A. HeLa cells were stained with anti-AKT1 rabbit purified polyclonal 1:1200 and anti-PPM1A mouse monoclonal antibody 1:50. Each red dot represents the detection of protein-protein interaction



Sandwich ELISA: PP2C alpha/PPM1A Antibody (4E11) [H00005494-M03] - Detection limit for recombinant GST tagged PPM1A is 3 ng/ml as a capture antibody.



## Publications

Jung-Sun L, Eun-Ju L, Jae-Hyun L et al. Autoantibodies against Protein Phosphatase Magnesium-Dependent 1A as a Biomarker for Predicting Radiographic Progression in Ankylosing Spondylitis Treated with Anti-Tumor Necrosis Factor Agents. J Clin Med. 2020-12-07 [PMID: 33297507]



### **Novus Biologicals USA**

10730 E. Briarwood Avenue  
Centennial, CO 80112  
USA  
Phone: 303.730.1950  
Toll Free: 1.888.506.6887  
Fax: 303.730.1966  
nb-customerservice@bio-techne.com

### **Bio-Techne Canada**

21 Canmotor Ave  
Toronto, ON M8Z 4E6  
Canada  
Phone: 905.827.6400  
Toll Free: 855.668.8722  
Fax: 905.827.6402  
canada.inquires@bio-techne.com

### **Bio-Techne Ltd**

19 Barton Lane  
Abingdon Science Park  
Abingdon, OX14 3NB, United Kingdom  
Phone: (44) (0) 1235 529449  
Free Phone: 0800 37 34 15  
Fax: (44) (0) 1235 533420  
info.EMEA@bio-techne.com

### **General Contact Information**

www.novusbio.com  
Technical Support: nb-technical@bio-techne.com  
Orders: nb-customerservice@bio-techne.com  
General: novus@novusbio.com

### **Products Related to H00005494-M03**

HAF007	Goat anti-Mouse IgG Secondary Antibody [HRP]
NB720-B	Rabbit anti-Mouse IgG (H+L) Secondary Antibody [Biotin]
NBP1-96981-0.5mg	Mouse IgG2a Kappa Isotype Control (M2AK)
NBP2-13796PEP	PP2C alpha/PPM1A Recombinant Protein Antigen

### **Limitations**

This product is for research use only and is not approved for use in humans or in clinical diagnosis. Primary Antibodies are guaranteed for 1 year from date of receipt.

For more information on our 100% guarantee, please visit [www.novusbio.com/guarantee](http://www.novusbio.com/guarantee)

Earn gift cards/discounts by submitting a review: [www.novusbio.com/reviews/submit/H00005494-M03](http://www.novusbio.com/reviews/submit/H00005494-M03)

Earn gift cards/discounts by submitting a publication using this product:  
[www.novusbio.com/publications](http://www.novusbio.com/publications)

