

Product Datasheet

Phospholipase D2 Antibody (1C5) - Azide and BSA Free H00005338-M01

Unit Size: 0.1 mg

Aliquot and store at -20C or -80C. Avoid freeze-thaw cycles.

www.novusbio.com



technical@novusbio.com

Publications: 4

Protocols, Publications, Related Products, Reviews, Research Tools and Images at:
www.novusbio.com/H00005338-M01

Updated 2/21/2025 v.20.1

Earn rewards for product
reviews and publications.

Submit a publication at www.novusbio.com/publications

Submit a review at www.novusbio.com/reviews/destination/H00005338-M01

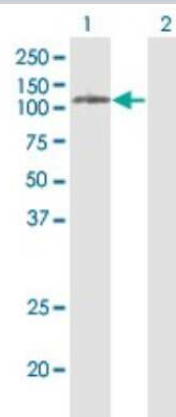


H00005338-M01**Phospholipase D2 Antibody (1C5) - Azide and BSA Free**

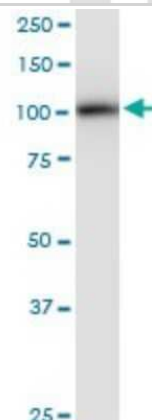
Product Information	
Unit Size	0.1 mg
Concentration	Concentrations vary lot to lot. See vial label for concentration. If unlisted please contact technical services.
Storage	Aliquot and store at -20C or -80C. Avoid freeze-thaw cycles.
Clonality	Monoclonal
Clone	1C5
Preservative	No Preservative
Isotype	IgG2a Kappa
Purity	IgG purified
Buffer	In 1x PBS, pH 7.4
Product Description	
Description	Quality control test: Antibody Reactive Against Recombinant Protein.
Host	Mouse
Gene ID	5338
Gene Symbol	PLD2
Species	Human, Mouse, Rat
Specificity/Sensitivity	PLD2 - phospholipase D2
Immunogen	PLD2 (AAH15033, 834 a.a. ~ 933 a.a) partial recombinant protein with GST tag. MW of the GST tag alone is 26 KDa. LRDPICDDFFQLWQDMAESNANIYEQIFRCLPSNATRLTLREYVAVEPLATV SPPLARSELTTQVQGHLVHFPLKFLEDESLLPPLGSKEGMIPLEVWT
Notes	This product is produced by and distributed for Abnova, a company based in Taiwan.
Product Application Details	
Applications	Western Blot, ELISA
Recommended Dilutions	Western Blot 1:500, ELISA
Application Notes	Antibody reactivity against Recombinant Protein with GST tag on ELISA and WB. GST tag alone is used as a negative control.

Images

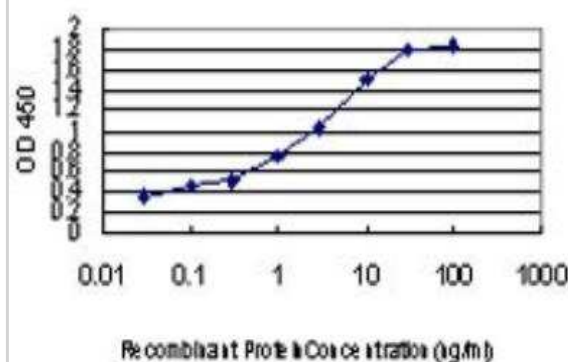
Western Blot: Phospholipase D2 Antibody (1C5) [H00005338-M01] - Analysis of PLD2 expression in transfected 293T cell line by PLD2 monoclonal antibody (M01), clone 1C5. Lane 1: PLD2 transfected lysate (Predicted MW: 105.9 KDa). Lane 2: Non-transfected lysate.



Western Blot: Phospholipase D2 Antibody (1C5) [H00005338-M01] - PLD2 monoclonal antibody (M01), clone 1C5. Analysis of PLD2 expression in rat brain.



ELISA: Phospholipase D2 Antibody (1C5) [H00005338-M01] - Detection limit for recombinant GST tagged PLD2 is approximately 0.03ng/ml as a capture antibody.



Publications

Brailoiu E, Chakraborty S, Brailoiu GC et al. Choline Is an Intracellular Messenger Linking Extracellular Stimuli to IP3-Evoked Ca²⁺ Signals through Sigma-1 Receptors. Cell Rep. 2019-03-08 [PMID: 30625315]

Lian XF, Yu CX, He XL et al. Construction of lentiviral shRNA expression vector targeting phospholipase D2 (PLD2) gened. African Journal of Biotechnology 2011-10-26 (WB, Human)

Nakagawa H, Hazama K, Ishida K et al. Inhibition of PLD1 activity causes ER stress via regulation of COPII vesicle formation. Biochem Biophys Res Commun 2017-06-22 [PMID: 28648601]

Somers-Edgar TJ, Taurin S, Larsen L, et al. Mechanisms for the activity of heterocyclic cyclohexanone curcumin derivatives in estrogen receptor negative human breast cancer cell lines. Invest New Drugs. 2009-10-09 [PMID: 19816657]



Novus Biologicals USA

10730 E. Briarwood Avenue
Centennial, CO 80112
USA
Phone: 303.730.1950
Toll Free: 1.888.506.6887
Fax: 303.730.1966
nb-customerservice@bio-techne.com

Bio-Techne Canada

21 Canmotor Ave
Toronto, ON M8Z 4E6
Canada
Phone: 905.827.6400
Toll Free: 855.668.8722
Fax: 905.827.6402
canada.inquires@bio-techne.com

Bio-Techne Ltd

19 Barton Lane
Abingdon Science Park
Abingdon, OX14 3NB, United Kingdom
Phone: (44) (0) 1235 529449
Free Phone: 0800 37 34 15
Fax: (44) (0) 1235 533420
info.EMEA@bio-techne.com

General Contact Information

www.novusbio.com
Technical Support: nb-technical@bio-techne.com
Orders: nb-customerservice@bio-techne.com
General: novus@novusbio.com

Products Related to H00005338-M01

HAF007	Goat anti-Mouse IgG Secondary Antibody [HRP]
NB720-B	Rabbit anti-Mouse IgG (H+L) Secondary Antibody [Biotin]
NBP1-96981-0.5mg	Mouse IgG2a Kappa Isotype Control (M2AK)
NBP1-87576PEP	Phospholipase D2 Recombinant Protein Antigen

Limitations

This product is for research use only and is not approved for use in humans or in clinical diagnosis. Primary Antibodies are guaranteed for 1 year from date of receipt.

For more information on our 100% guarantee, please visit www.novusbio.com/guarantee

Earn gift cards/discounts by submitting a review: www.novusbio.com/reviews/submit/H00005338-M01

Earn gift cards/discounts by submitting a publication using this product:
www.novusbio.com/publications

