

Product Datasheet

PLC-gamma 1 Antibody (2A2) - Azide and BSA Free H00005335-M01

Unit Size: 0.1 mg

Aliquot and store at -20C or -80C. Avoid freeze-thaw cycles.

www.novusbio.com



technical@novusbio.com

Publications: 2

Protocols, Publications, Related Products, Reviews, Research Tools and Images at:
www.novusbio.com/H00005335-M01

Updated 2/21/2025 v.20.1

Earn rewards for product
reviews and publications.

Submit a publication at www.novusbio.com/publications

Submit a review at www.novusbio.com/reviews/destination/H00005335-M01



H00005335-M01

PLC-gamma 1 Antibody (2A2) - Azide and BSA Free

Product Information

Unit Size	0.1 mg
Concentration	Concentrations vary lot to lot. See vial label for concentration. If unlisted please contact technical services.
Storage	Aliquot and store at -20C or -80C. Avoid freeze-thaw cycles.
Clonality	Monoclonal
Clone	2A2
Preservative	No Preservative
Isotype	IgG1 Kappa
Purity	IgG purified
Buffer	In 1x PBS, pH 7.4

Product Description

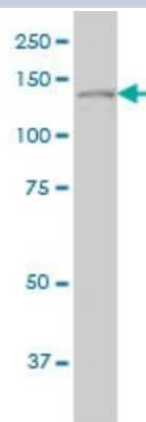
Description	Quality control test: Antibody Reactive Against Recombinant Protein.
Host	Mouse
Gene ID	5335
Gene Symbol	PLCG1
Species	Human
Specificity/Sensitivity	PLCG1 - phospholipase C, gamma 1
Immunogen	PLCG1 (NP_002651, 1192 a.a. ~ 1291 a.a) partial recombinant protein with GST tag. MW of the GST tag alone is 26 KDa. LKNNYSEDLELASLLIKIDIFPAKQENGDLSPFSGTSLRERGSDASGQLFHGRA REGSFESRYQQPFEDFRISQEHLADHFDSRERRAPRRTRVNGDNRL
Notes	This product is produced by and distributed for Abnova, a company based in Taiwan.

Product Application Details

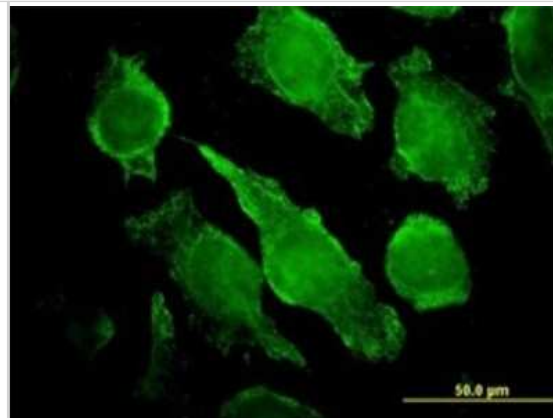
Applications	Western Blot, ELISA, Immunocytochemistry/ Immunofluorescence, Proximity Ligation Assay, Sandwich ELISA
Recommended Dilutions	Western Blot 1:500, ELISA, Immunocytochemistry/ Immunofluorescence 1:10-1:500, Proximity Ligation Assay, Sandwich ELISA 1:100-1:2000
Application Notes	Antibody reactivity against cell lysate and recombinant protein for WB. It has also been used for IF and ELISA.

Images

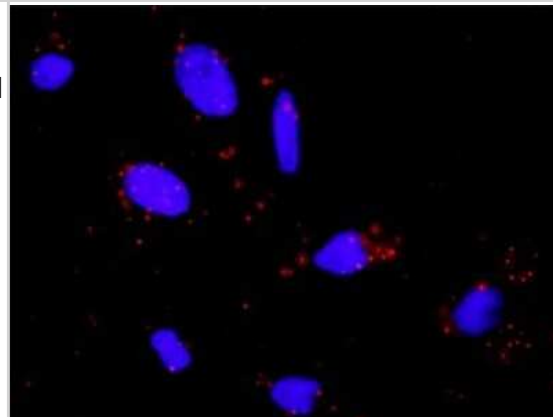
Western Blot: PLC-gamma 1 Antibody (2A2) [H00005335-M01] - PLCG1 monoclonal antibody (M01), clone 2A2 Analysis of PLCG1 expression in Hela S3 NE.



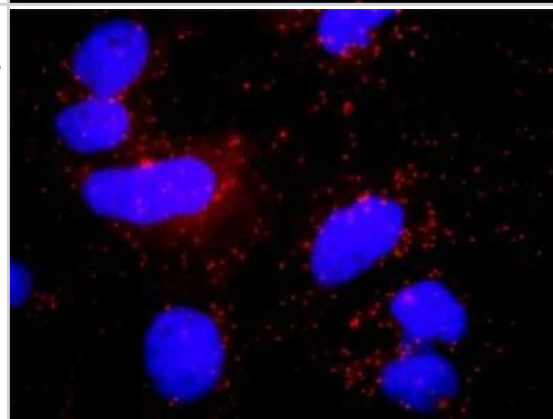
Immunocytochemistry/Immunofluorescence: PLC-gamma 1 Antibody (2A2) [H00005335-M01] - Analysis of monoclonal antibody to PLCG1 on HeLa cell. Antibody concentration 40 ug/ml.



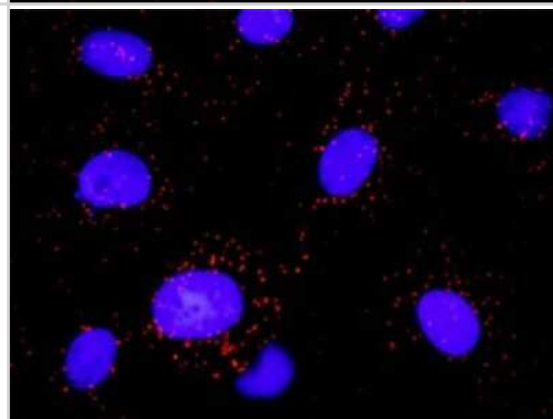
Proximity Ligation Assay: PLC-gamma 1 Antibody (2A2) [H00005335-M01] - Analysis of protein-protein interactions between PTK2 and PLCG1. HeLa cells were stained with anti-PTK2 rabbit purified polyclonal 1:1200 and anti-PLCG1 mouse monoclonal antibody 1:50. Each red dot represents the detection of protein-protein interaction complex, and nuclei were counterstained with DAPI (blue).



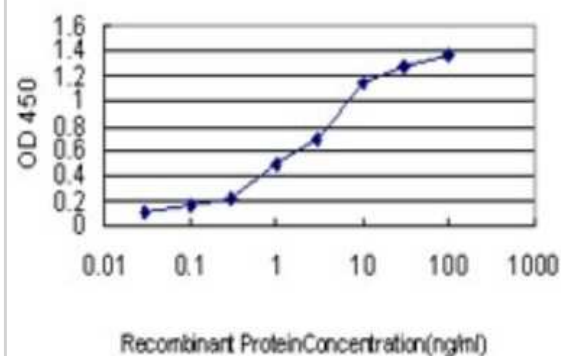
Proximity Ligation Assay: PLC-gamma 1 Antibody (2A2) [H00005335-M01] - Analysis of protein-protein interactions between HCK and PLCG1. Huh7 cells were stained with anti-HCK rabbit purified polyclonal 1:1200 and anti-PLCG1 mouse monoclonal antibody 1:50. Each red dot represents the detection of protein-protein interaction complex, and nuclei were counterstained with DAPI (blue).



Proximity Ligation Assay: PLC-gamma 1 Antibody (2A2) [H00005335-M01] - Analysis of protein-protein interactions between PDGFRB and PLCG1. Mahlavu cells were stained with anti-PDGFRB rabbit purified polyclonal 1:600 and anti-PLCG1 mouse monoclonal antibody 1:100. Each red dot represents the detection of protein-protein interaction complex, and nuclei were counterstained with DAPI (blue).



Sandwich ELISA: PLC-gamma 1 Antibody (2A2) [H00005335-M01] - Detection limit for recombinant GST tagged PLCG1 is approximately 0.1ng/ml as a capture antibody.



Publications

Olsson F, Sarri N, Papadopoulos N et al. Effects of 1 alpha,25-dihydroxyvitamin D3 and tacalcitol on cell signaling and anchorage-independent growth in T98G and U251 glioblastoma cells *Biochemistry and Biophysics Reports* 2022-09-01 [PMID: 35935021]

Liu CH, Chen TC, Chau GY et al. An analysis of protein-protein interactions in cross-talk pathways reveals CRKL as a novel prognostic marker in hepatocellular carcinoma. *Mol Cell Proteomics* 2013-02-08 [PMID: 23397142]

**Novus Biologicals USA**

10730 E. Briarwood Avenue
Centennial, CO 80112
USA
Phone: 303.730.1950
Toll Free: 1.888.506.6887
Fax: 303.730.1966
nb-customerservice@bio-techne.com

Bio-Techne Canada

21 Canmotor Ave
Toronto, ON M8Z 4E6
Canada
Phone: 905.827.6400
Toll Free: 855.668.8722
Fax: 905.827.6402
canada.inquires@bio-techne.com

Bio-Techne Ltd

19 Barton Lane
Abingdon Science Park
Abingdon, OX14 3NB, United Kingdom
Phone: (44) (0) 1235 529449
Free Phone: 0800 37 34 15
Fax: (44) (0) 1235 533420
info.EMEA@bio-techne.com

General Contact Information

www.novusbio.com
Technical Support: nb-technical@bio-techne.com
Orders: nb-customerservice@bio-techne.com
General: novus@novusbio.com

Products Related to H00005335-M01

HAF007	Goat anti-Mouse IgG Secondary Antibody [HRP]
NB720-B	Rabbit anti-Mouse IgG (H+L) Secondary Antibody [Biotin]
NBP1-43319-0.5mg	Mouse IgG1 Kappa Isotype Control (P3.6.2.8.1)
H00005335-Q01-10ug	Recombinant Human PLC-gamma 1 GST (N-Term) Protein

Limitations

This product is for research use only and is not approved for use in humans or in clinical diagnosis. Primary Antibodies are guaranteed for 1 year from date of receipt.

For more information on our 100% guarantee, please visit www.novusbio.com/guarantee

Earn gift cards/discounts by submitting a review: www.novusbio.com/reviews/submit/H00005335-M01

Earn gift cards/discounts by submitting a publication using this product:
www.novusbio.com/publications

