

# Product Datasheet

## NF-L Antibody H00004747-D01P

Unit Size: 0.1 mg

Aliquot and store at -20C or -80C. Avoid freeze-thaw cycles.

[www.novusbio.com](http://www.novusbio.com)



[technical@novusbio.com](mailto:technical@novusbio.com)

### Publications: 2

Protocols, Publications, Related Products, Reviews, Research Tools and Images at:  
[www.novusbio.com/H00004747-D01P](http://www.novusbio.com/H00004747-D01P)

Updated 6/27/2023 v.20.1

Earn rewards for product  
reviews and publications.

Submit a publication at [www.novusbio.com/publications](http://www.novusbio.com/publications)

Submit a review at [www.novusbio.com/reviews/destination/H00004747-D01P](http://www.novusbio.com/reviews/destination/H00004747-D01P)



**H00004747-D01P**

NF-L Antibody

Product Information	
Unit Size	0.1 mg
Concentration	Concentrations vary lot to lot. See vial label for concentration. If unlisted please contact technical services.
Storage	Aliquot and store at -20C or -80C. Avoid freeze-thaw cycles.
Clonality	Polyclonal
Preservative	No Preservative
Isotype	IgG
Purity	Protein A purified
Buffer	PBS (pH 7.4)

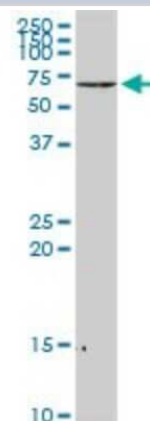
Product Description	
Description	Quality control test: Antibody reactive against mammalian transfected lysate.
Host	Rabbit
Gene ID	4747
Gene Symbol	NEFL
Species	Human
Marker	Neuronal Marker
Specificity/Sensitivity	NEFL - neurofilament, light polypeptide 68kDa,
Immunogen	NEFL (NP_006149.2, 1 a.a. - 543 a.a.) full-length human protein. MSSFSYEPYYSTSYKRRYVETPRVHISSVRSGYSTARSAYSSYSAPVSSSLSV RRSYSSSSGSLMPLENLDLSQVA AISNDLKSIRTQEKAQLQDLNDRFASFIER VHELEQQNKVLEAELLVLRQKHSEPSRFRALYEQEIRDLRLAAEDATNEKQALQ GEREGLEETLRNLQARYEEEEVLSREDAEGRLMEARKGADEAALARAELEKRID SLMDEISFLKKVHEEEIAELQAQIQYAQISVEMDVTKPDLAALKDIRAQYEKLA AKNMQNAEEWFKSRFTVLTESAANKNTDAVRAAKDEVSESRLLKAKTLEIEAC RGMNEALEKQLQELEDKQNADISAMQDTINKLENELRTTKSEMARYLKEYQDL LNVKMALDIEIAAYRKLLEGEETRLSFTSVGSITSGYSQSSQVFGRSAYGGLQT SSYLMSTRSFPSYYTSHVQEEQIEVEETIEAAKAEAAKDEPPSEGEAEKDK EEAE EQAACKKD
Notes	This product is produced by and distributed for Abnova, a company based in Taiwan.

Product Application Details	
Applications	Western Blot, Dot Blot, ELISA, Proximity Ligation Assay
Recommended Dilutions	Western Blot, ELISA, Proximity Ligation Assay, Dot Blot
Application Notes	Antibody reactivity against Recombinant Protein with GST tag on WB and also on transfected lysate in WB. GST tag alone is used as a negative control. ELISA usage reported in scientific literature (PMID: 23287695).

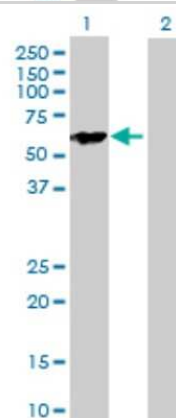


## Images

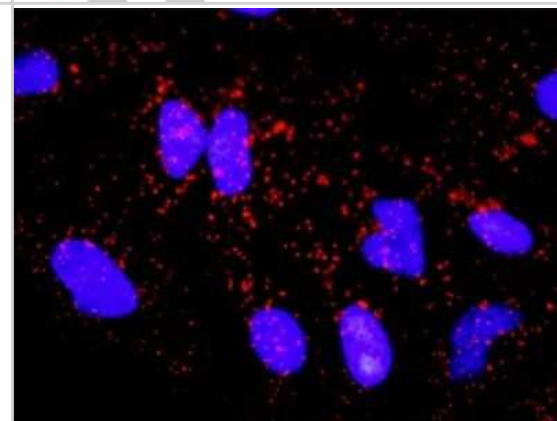
Western Blot: NF-L Antibody [H00004747-D01P] - Analysis of NEFL expression in Hela S3 NE.



Western Blot: NF-L Antibody [H00004747-D01P] - Analysis of NEFL expression in transfected 293T cell line by NEFL polyclonal antibody. Lane 1: NEFL transfected lysate(61.50 KDa). Lane 2: Non-transfected lysate.



Proximity Ligation Assay: NF-L Antibody [H00004747-D01P] - Analysis of protein-protein interactions between NEFL and APP. HeLa cells were stained with anti-NEFL rabbit purified polyclonal 1:1200 and anti-APP mouse monoclonal antibody 1:50. Each red dot represents the detection of protein-protein interaction complex, and nuclei were counterstained with DAPI (blue).



## Publications

Madeddu R, Farace C, Tolu P et al. Cytoskeletal proteins in the cerebrospinal fluid as biomarker of multiple sclerosis. *Neurol Sci.* 2012-02-24 [PMID: 22362332] (Human)

Rana OR, Schroder JW, Baukloh JK et al. Neurofilament light chain as an early and sensitive predictor of long-term neurological outcome in patients after cardiac arrest *Int J Cardiol* 2012-12-31 [PMID: 23287695] (ELISA, Human)



### **Novus Biologicals USA**

10730 E. Briarwood Avenue  
Centennial, CO 80112  
USA  
Phone: 303.730.1950  
Toll Free: 1.888.506.6887  
Fax: 303.730.1966  
novus@novusbio.com

### **Bio-Techne Canada**

21 Canmotor Ave  
Toronto, ON M8Z 4E6  
Canada  
Phone: 905.827.6400  
Toll Free: 855.668.8722  
Fax: 905.827.6402  
canada.inquires@bio-techne.com

### **Bio-Techne Ltd**

19 Barton Lane  
Abingdon Science Park  
Abingdon, OX14 3NB, United Kingdom  
Phone: (44) (0) 1235 529449  
Free Phone: 0800 37 34 15  
Fax: (44) (0) 1235 533420  
info.EMEA@bio-techne.com

### **General Contact Information**

www.novusbio.com  
Technical Support: technical@novusbio.com  
Orders: orders@novusbio.com  
General: novus@novusbio.com

### **Limitations**

This product is for research use only and is not approved for use in humans or in clinical diagnosis. Primary Antibodies are guaranteed for 1 year from date of receipt.

For more information on our 100% guarantee, please visit [www.novusbio.com/guarantee](http://www.novusbio.com/guarantee)

Earn gift cards/discounts by submitting a review: [www.novusbio.com/reviews/submit/H00004747-D01P](http://www.novusbio.com/reviews/submit/H00004747-D01P)

Earn gift cards/discounts by submitting a publication using this product:  
[www.novusbio.com/publications](http://www.novusbio.com/publications)

