

Product Datasheet

Smad3 Antibody (1B7) H00004088-M07

Unit Size: 0.1 mg

Aliquot and store at -20C or -80C. Avoid freeze-thaw cycles.

www.novusbio.com



technical@novusbio.com

Protocols, Publications, Related Products, Reviews, Research Tools and Images at:
www.novusbio.com/H00004088-M07

Updated 7/16/2023 v.20.1

Earn rewards for product
reviews and publications.

Submit a publication at www.novusbio.com/publications

Submit a review at www.novusbio.com/reviews/destination/H00004088-M07



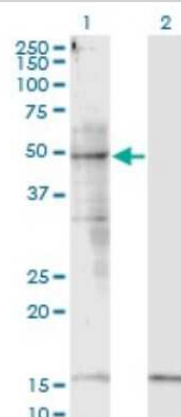
H00004088-M07**Smad3 Antibody (1B7)**

Product Information	
Unit Size	0.1 mg
Concentration	Concentrations vary lot to lot. See vial label for concentration. If unlisted please contact technical services.
Storage	Aliquot and store at -20C or -80C. Avoid freeze-thaw cycles.
Clonality	Monoclonal
Clone	1B7
Preservative	No Preservative
Isotype	IgG2b Kappa
Purity	IgG purified
Buffer	In 1x PBS, pH 7.4
Product Description	
Description	Quality control test: Antibody Reactive Against Recombinant Protein.
Host	Mouse
Gene ID	4088
Gene Symbol	SMAD3
Species	Human, Mouse, Rat
Reactivity Notes	Please note that this antibody is reactive to Mouse and derived from the same host, Mouse. Additional Mouse on Mouse blocking steps may be required for IHC and ICC experiments. Please contact Technical Support for more information.
Specificity/Sensitivity	SMAD3 - SMAD, mothers against DPP homolog 3 (Drosophila)
Immunogen	SMAD3 (NP_005893, 1 a.a. ~ 110 a.a) partial recombinant protein with GST tag. MW of the GST tag alone is 26 KDa. MSSILPFTPIVKRLLGWKKGEQNGQEEKWCEKAVKSLVKKLKKTGQLDELEK AITTQNVNTKCITIPRSLDGRLQVSHRKGLPHVIYCRLWRWPDLSHHELRAME LCE
Notes	This product is produced by and distributed for Abnova, a company based in Taiwan.
Product Application Details	
Applications	Western Blot, ELISA
Recommended Dilutions	Western Blot 1:500, ELISA
Application Notes	Antibody reactivity against cell lysate for WB. It has been used for ELISA.

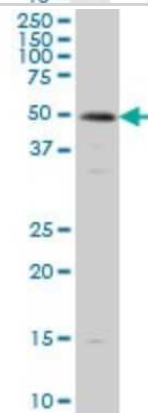


Images

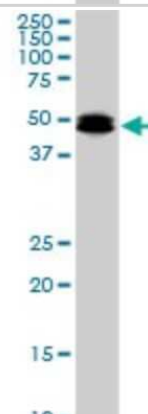
Western Blot: Smad3 Antibody (1B7) [H00004088-M07] - Analysis of SMAD3 expression in transfected 293T cell line by SMAD3 monoclonal antibody (M07), clone 1B7. Lane 1: SMAD3 transfected lysate (48 KDa). Lane 2: Non-transfected lysate.



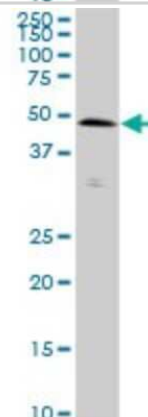
Western Blot: Smad3 Antibody (1B7) [H00004088-M07] - Analysis of SMAD3 expression in HeLa (Cat # L013V1).



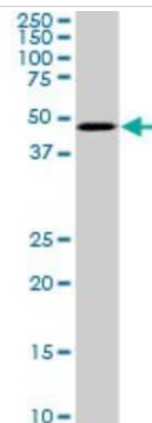
Western Blot: Smad3 Antibody (1B7) [H00004088-M07] - Analysis of SMAD3 expression in PC-12 (Cat # L012V1).



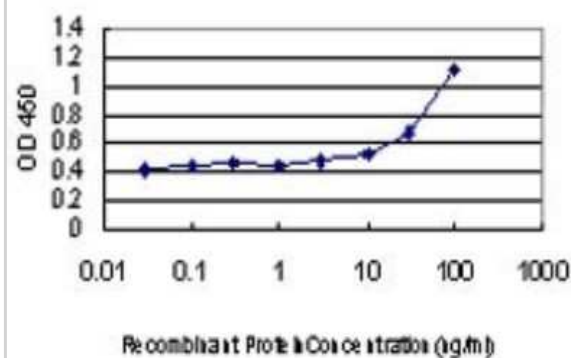
Western Blot: Smad3 Antibody (1B7) [H00004088-M07] - Analysis of SMAD3 expression in Raw 264.7 (Cat # L024V1).



Western Blot: Smad3 Antibody (1B7) [H00004088-M07] - Analysis of SMAD3 expression in NIH/3T3 (Cat # L018V1).



ELISA: Smad3 Antibody (1B7) [H00004088-M07] - Detection limit for recombinant GST tagged SMAD3 is approximately 3ng/ml as a capture antibody.





Novus Biologicals USA

10730 E. Briarwood Avenue
Centennial, CO 80112
USA

Phone: 303.730.1950
Toll Free: 1.888.506.6887
Fax: 303.730.1966
novus@novusbio.com

Bio-Techne Canada

21 Canmotor Ave
Toronto, ON M8Z 4E6
Canada

Phone: 905.827.6400
Toll Free: 855.668.8722
Fax: 905.827.6402
canada.inquires@bio-techne.com

Bio-Techne Ltd

19 Barton Lane
Abingdon Science Park
Abingdon, OX14 3NB, United Kingdom
Phone: (44) (0) 1235 529449
Free Phone: 0800 37 34 15
Fax: (44) (0) 1235 533420
info.EMEA@bio-techne.com

General Contact Information

www.novusbio.com
Technical Support: technical@novusbio.com
Orders: orders@novusbio.com
General: novus@novusbio.com

Limitations

This product is for research use only and is not approved for use in humans or in clinical diagnosis. Primary Antibodies are guaranteed for 1 year from date of receipt.

For more information on our 100% guarantee, please visit www.novusbio.com/guarantee

Earn gift cards/discounts by submitting a review: www.novusbio.com/reviews/submit/H00004088-M07

Earn gift cards/discounts by submitting a publication using this product:
www.novusbio.com/publications

