

Product Datasheet

MAD2L1 Antibody (2E2-1D6)

H00004085-M01

Unit Size: 0.1 mg

Aliquot and store at -20C or -80C. Avoid freeze-thaw cycles.

www.novusbio.com



technical@novusbio.com

Publications: 1

Protocols, Publications, Related Products, Reviews, Research Tools and Images at:
www.novusbio.com/H00004085-M01

Updated 6/27/2023 v.20.1

Earn rewards for product
reviews and publications.

Submit a publication at www.novusbio.com/publications

Submit a review at www.novusbio.com/reviews/destination/H00004085-M01



H00004085-M01

MAD2L1 Antibody (2E2-1D6)

Product Information	
Unit Size	0.1 mg
Concentration	This product is unpurified. The exact concentration of antibody is not quantifiable.
Storage	Aliquot and store at -20C or -80C. Avoid freeze-thaw cycles.
Clonality	Monoclonal
Clone	2E2-1D6
Preservative	No Preservative
Isotype	IgG2b Kappa
Purity	Ascites
Buffer	In 1x PBS, pH 7.4

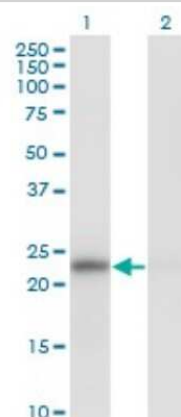
Product Description	
Description	Quality control test: Antibody Reactive Against Recombinant Protein.
Host	Mouse
Gene ID	4085
Gene Symbol	MAD2L1
Species	Human
Immunogen	MAD2L1 (AAH00356, 1 a.a. ~ 205 a.a) full-length recombinant protein with GST tag. MW of the GST tag alone is 26 KDa. MALQLSREQGITLRGSAEIVAEFFSFGINSILYQRGIYPSETFTRVQKYGLTLLVT TDLELIKYLNNVVEQLKDWLYKCSVQKLVVVISNIESGEVLERWQFDIECDKTAK DDSAPREKSQKAIQDEIRSVIRQITATVTFLPLEVSCSFDLLIYTDKDLVVPEKW EESGPQFITNSEEVRLRSFTTTIHKVNSMVAYKIPVND
Notes	This product is produced by and distributed for Abnova, a company based in Taiwan.

Product Application Details	
Applications	Western Blot, ELISA, Sandwich ELISA
Recommended Dilutions	Western Blot 1:100 - 1:2000, ELISA, Sandwich ELISA 1:100 - 1:2000

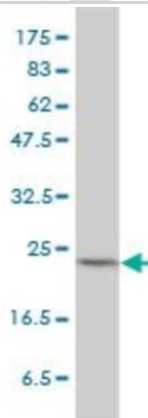


Images

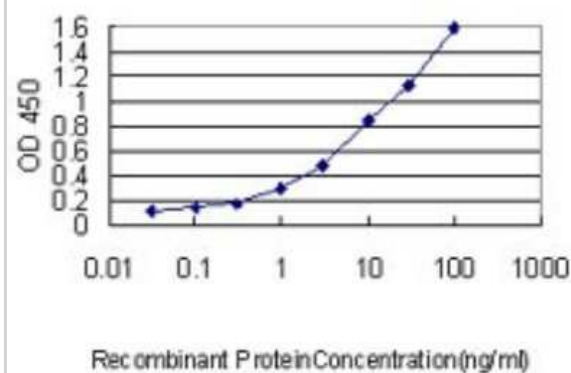
Western Blot: MAD2L1 Antibody (2E2-1D6) [H00004085-M01] - Analysis of MAD2L1 expression in transfected 293T cell line by MAD2L1 monoclonal antibody (M01), clone 2E2-1D6. Lane 1: MAD2L1 transfected lysate (23.5 KDa). Lane 2: Non-transfected lysate.



Western Blot: MAD2L1 Antibody (2E2-1D6) [H00004085-M01] - MAD2L1 monoclonal antibody (M01), clone 2E2-1D6 Analysis of MAD2L1 expression in HeLa.



Sandwich ELISA: MAD2L1 Antibody (2E2-1D6) [H00004085-M01] - Detection limit for recombinant GST tagged MAD2L1 is approximately 0.03ng/ml as a capture antibody.



Publications

Yeh PC, Yeh CC, Chen YC, Juang YL. RED, a spindle pole-associated protein, is required for kinetochore localization of MAD1, mitotic progression, and activation of the spindle assembly checkpoint. J Biol Chem. 2012-02-18 [PMID: 22351768]



Novus Biologicals USA

10730 E. Briarwood Avenue
Centennial, CO 80112
USA
Phone: 303.730.1950
Toll Free: 1.888.506.6887
Fax: 303.730.1966
novus@novusbio.com

Bio-Techne Canada

21 Canmotor Ave
Toronto, ON M8Z 4E6
Canada
Phone: 905.827.6400
Toll Free: 855.668.8722
Fax: 905.827.6402
canada.inquires@bio-techne.com

Bio-Techne Ltd

19 Barton Lane
Abingdon Science Park
Abingdon, OX14 3NB, United Kingdom
Phone: (44) (0) 1235 529449
Free Phone: 0800 37 34 15
Fax: (44) (0) 1235 533420
info.EMEA@bio-techne.com

General Contact Information

www.novusbio.com
Technical Support: technical@novusbio.com
Orders: orders@novusbio.com
General: novus@novusbio.com

Limitations

This product is for research use only and is not approved for use in humans or in clinical diagnosis. Primary Antibodies are guaranteed for 1 year from date of receipt.

For more information on our 100% guarantee, please visit www.novusbio.com/guarantee

Earn gift cards/discounts by submitting a review: www.novusbio.com/reviews/submit/H00004085-M01

Earn gift cards/discounts by submitting a publication using this product:
www.novusbio.com/publications

