

Product Datasheet

SH2D1A Antibody (1C9) - Azide and BSA Free H00004068-M01

Unit Size: 0.1 mg

Aliquot and store at -20C or -80C. Avoid freeze-thaw cycles.

www.novusbio.com



technical@novusbio.com

Reviews: 1 Publications: 9

Protocols, Publications, Related Products, Reviews, Research Tools and Images at:
www.novusbio.com/H00004068-M01

Updated 2/21/2025 v.20.1

Earn rewards for product
reviews and publications.

Submit a publication at www.novusbio.com/publications

Submit a review at www.novusbio.com/reviews/destination/H00004068-M01



H00004068-M01

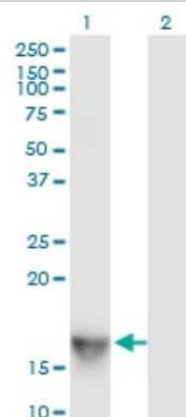
SH2D1A Antibody (1C9) - Azide and BSA Free

Product Information	
Unit Size	0.1 mg
Concentration	Concentrations vary lot to lot. See vial label for concentration. If unlisted please contact technical services.
Storage	Aliquot and store at -20C or -80C. Avoid freeze-thaw cycles.
Clonality	Monoclonal
Clone	1C9
Preservative	No Preservative
Isotype	IgG2a Kappa
Purity	IgG purified
Buffer	PBS, pH 7.4
Product Description	
Description	Quality control test: Antibody Reactive Against Recombinant Protein.
Host	Mouse
Gene ID	4068
Gene Symbol	SH2D1A
Species	Human, Mouse
Specificity/Sensitivity	SH2D1A - SH2 domain protein 1A, Duncan's disease (lymphoproliferative syndrome)
Immunogen	SH2D1A (AAH20732, 1 a.a. ~ 128 a.a) full-length recombinant protein with GST tag. MW of the GST tag alone is 26 KDa. MDAVAVYHGKISRETGEKLLLATGLDGSYLLRDSESVPGVYCLCVLYHGYYTY RVSQTETGSWSAETAPGVHKRYFRKIKNLISAFQKPDQGIVIPLQYPVEKKSSA RSTQGTTGIREDPDVCLKAP
Notes	This product is produced by and distributed for Abnova, a company based in Taiwan.
Product Application Details	
Applications	Western Blot, ELISA, Flow Cytometry, Functional
Recommended Dilutions	Western Blot 1:500, Flow Cytometry, ELISA, Functional

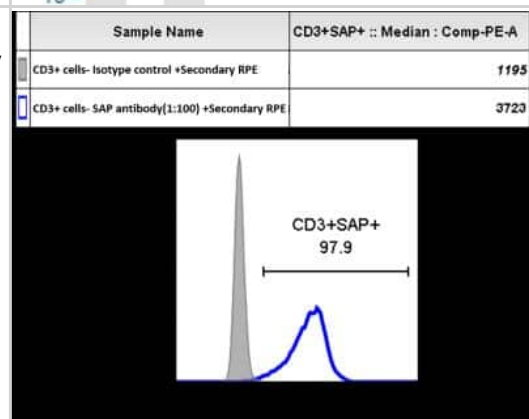


Images

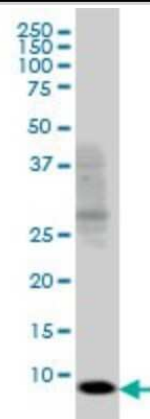
Western Blot: SH2D1A Antibody (1C9) [H00004068-M01] - Analysis of SH2D1A expression in transfected 293T cell line by SH2D1A monoclonal antibody (M01), clone 1C9. Lane 1: SH2D1A transfected lysate (14.2 KDa). Lane 2: Non-transfected lysate.



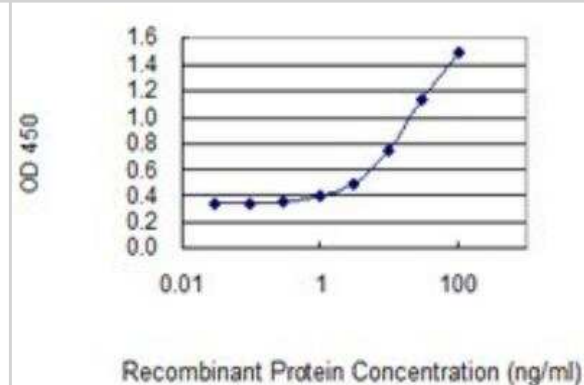
Flow Cytometry: SH2D1A Antibody (1C9) [H00004068-M01] - Intracellular staining of human T cells with SH2D1A monoclonal antibody or isotype control antibody, followed by a Polyclonal Goat Anti-Mouse/RPE secondary antibody. Grey filled histogram: Isotype control, empty blue histogram: SH2D1A antibody. Flow cytometry image submitted by a verified customer review.



Western Blot: SH2D1A Antibody (1C9) [H00004068-M01] - SH2D1A monoclonal antibody (M01), clone 1C9 Analysis of SH2D1A expression in Jurkat.



ELISA: SH2D1A Antibody (1C9) [H00004068-M01] - Detection limit for recombinant GST tagged SH2D1A is 0.3 ng/ml as a capture antibody.



Publications

Houghton BC, Panchal N, Haas SA et al. Genome Editing With TALEN, CRISPR-Cas9 and CRISPR-Cas12a in Combination With AAV6 Homology Donor Restores T Cell Function for XLP *Frontiers in Genome Editing* 2022-05-23 [PMID: 35677600]

Khanolkar A, Wilks J, Liu G et al. Detailed Phenotypic and Functional Characterization of a Rare, Antibody-Dependent SLAM-Associated Protein Expression Pattern. *Immunohorizons*. 2020-04-10 [PMID: 32276922]

Panchal N, Houghton B, Diez B et al. Transfer of gene corrected T cells corrects humoral and cytotoxic defects in X-linked lymphoproliferative disease (XLP1). *J Allergy Clin Immunol* 2018-04-26 [PMID: 29705247]

Cetica V, Sieni E, Pende D et al. Genetic predisposition to hemophagocytic lymphohistiocytosis: Report on 500 patients from the Italian registry. *Journal of Allergy and Clinical Immunology*. 2015-09-01 [PMID: 26342526]

Palendira U, Low C, Chan A et al. Molecular Pathogenesis of EBV Susceptibility in XLP as Revealed by Analysis of Female Carriers with Heterozygous Expression of SAP. *PLoS Biol*. 2011-11-01 [PMID: 22069374]

Palendira U, Low C, Bell AI et al. Expansion of somatically reverted memory CD8+ T cells in patients with X-linked lymphoproliferative disease caused by selective pressure from Epstein-Barr virus. *J Exp Med*. 2012-04-09 [PMID: 22493517]

Menard L, Cantaert T, Chamberlain N et al. Signaling lymphocytic activation molecule (SLAM)/SLAM-associated protein pathway regulates human B-cell tolerance. *J Allergy Clin Immunol*. 2013-12-24 [PMID: 24373350]

Meazza R, Tuberosa C, Cetica V et al. Diagnosing XLP1 in patients with hemophagocytic lymphohistiocytosis. *J Allergy Clin Immunol*. 2014-06-27 [PMID: 24985396]

Ma CS, Suryani S, Avery DT et al. Early commitment of naive human CD4(+) T cells to the T follicular helper (T(FH)) cell lineage is induced by IL-12. *Immunol Cell Biol*. 2009-09-01 [PMID: 19721453]





Novus Biologicals USA

10730 E. Briarwood Avenue
Centennial, CO 80112
USA
Phone: 303.730.1950
Toll Free: 1.888.506.6887
Fax: 303.730.1966
nb-customerservice@bio-techne.com

Bio-Techne Canada

21 Canmotor Ave
Toronto, ON M8Z 4E6
Canada
Phone: 905.827.6400
Toll Free: 855.668.8722
Fax: 905.827.6402
canada.inquires@bio-techne.com

Bio-Techne Ltd

19 Barton Lane
Abingdon Science Park
Abingdon, OX14 3NB, United Kingdom
Phone: (44) (0) 1235 529449
Free Phone: 0800 37 34 15
Fax: (44) (0) 1235 533420
info.EMEA@bio-techne.com

General Contact Information

www.novusbio.com
Technical Support: nb-technical@bio-techne.com
Orders: nb-customerservice@bio-techne.com
General: novus@novusbio.com

Products Related to H00004068-M01

HAF007	Goat anti-Mouse IgG Secondary Antibody [HRP]
NB720-B	Rabbit anti-Mouse IgG (H+L) Secondary Antibody [Biotin]
NBP1-96981-0.5mg	Mouse IgG2a Kappa Isotype Control (M2AK)
NBP1-50869-0.1mg	Recombinant Human SH2D1A His Protein

Limitations

This product is for research use only and is not approved for use in humans or in clinical diagnosis. Primary Antibodies are guaranteed for 1 year from date of receipt.

For more information on our 100% guarantee, please visit www.novusbio.com/guarantee

Earn gift cards/discounts by submitting a review: www.novusbio.com/reviews/submit/H00004068-M01

Earn gift cards/discounts by submitting a publication using this product:
www.novusbio.com/publications

