

Product Datasheet

Laminin gamma 1 Antibody (M1) H00003915-M03

Unit Size: 0.1 mg

Aliquot and store at -20C or -80C. Avoid freeze-thaw cycles.

www.novusbio.com



technical@novusbio.com

Protocols, Publications, Related Products, Reviews, Research Tools and Images at:
www.novusbio.com/H00003915-M03

Updated 6/27/2023 v.20.1

Earn rewards for product
reviews and publications.

Submit a publication at www.novusbio.com/publications

Submit a review at www.novusbio.com/reviews/destination/H00003915-M03

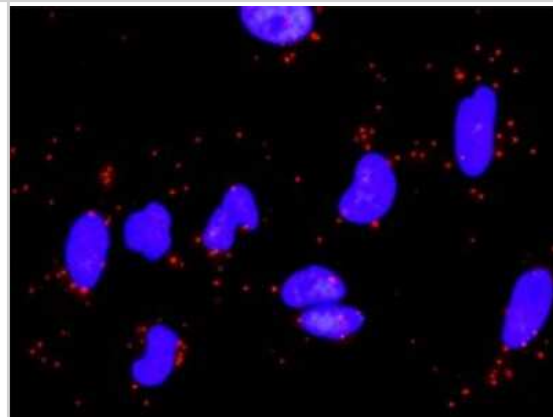


H00003915-M03**Laminin gamma 1 Antibody (M1)**

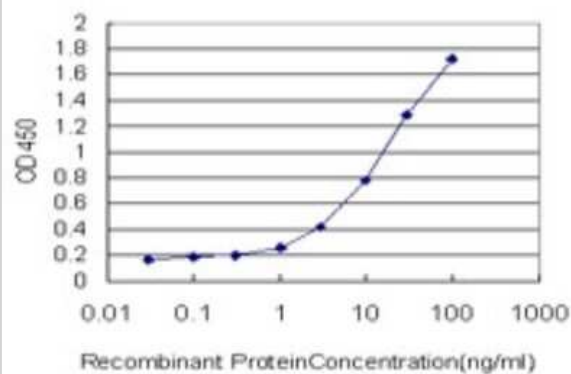
Product Information	
Unit Size	0.1 mg
Concentration	This product is unpurified. The exact concentration of antibody is not quantifiable.
Storage	Aliquot and store at -20C or -80C. Avoid freeze-thaw cycles.
Clonality	Monoclonal
Clone	M1
Preservative	No Preservative
Isotype	IgG2a Kappa
Purity	Ascites
Buffer	In 1x PBS, pH 7.4
Product Description	
Description	Quality control test: Antibody Reactive Against Recombinant Protein.
Host	Mouse
Gene ID	3915
Gene Symbol	LAMC1
Species	Human
Specificity/Sensitivity	LAMC1 - laminin, gamma 1 (formerly LAMB2)
Immunogen	LAMC1 (AAH15586, 1 a.a. ~ 38 a.a) full-length recombinant protein with GST tag. MW of the GST tag alone is 26 KDa. MNKRRTSHRIWKNKLPEYMRRPKGPVTKLWRSMPAWLS
Notes	This product is produced by and distributed for Abnova, a company based in Taiwan.
Product Application Details	
Applications	Western Blot, ELISA, Proximity Ligation Assay, Sandwich ELISA
Recommended Dilutions	Western Blot 1:500, ELISA, Proximity Ligation Assay, Sandwich ELISA
Application Notes	Antibody reactivity against Recombinant Protein with GST tag on ELISA and WB. GST tag alone is used as a negative control.

Images

Proximity Ligation Assay: Laminin gamma 1 Antibody (M1) [H00003915-M03] - Analysis of protein-protein interactions between LAMA5 and LAMC1. HeLa cells were stained with anti-LAMA5 rabbit purified polyclonal 1:1200 and anti-LAMC1 mouse monoclonal antibody 1:50. Each red dot represents the detection of protein-protein interaction



Sandwich ELISA: Laminin gamma 1 Antibody (M1) [H00003915-M03] - Detection limit for recombinant GST tagged LAMC1 is approximately 0.03ng/ml as a capture antibody.





Novus Biologicals USA

10730 E. Briarwood Avenue
Centennial, CO 80112
USA

Phone: 303.730.1950
Toll Free: 1.888.506.6887
Fax: 303.730.1966
novus@novusbio.com

Bio-Techne Canada

21 Canmotor Ave
Toronto, ON M8Z 4E6
Canada

Phone: 905.827.6400
Toll Free: 855.668.8722
Fax: 905.827.6402
canada.inquires@bio-techne.com

Bio-Techne Ltd

19 Barton Lane
Abingdon Science Park
Abingdon, OX14 3NB, United Kingdom
Phone: (44) (0) 1235 529449
Free Phone: 0800 37 34 15
Fax: (44) (0) 1235 533420
info.EMEA@bio-techne.com

General Contact Information

www.novusbio.com
Technical Support: technical@novusbio.com
Orders: orders@novusbio.com
General: novus@novusbio.com

Limitations

This product is for research use only and is not approved for use in humans or in clinical diagnosis. Primary Antibodies are guaranteed for 1 year from date of receipt.

For more information on our 100% guarantee, please visit www.novusbio.com/guarantee

Earn gift cards/discounts by submitting a review: www.novusbio.com/reviews/submit/H00003915-M03

Earn gift cards/discounts by submitting a publication using this product:
www.novusbio.com/publications

