

Product Datasheet

Recombinant Human KRTHA2 GST (N-Term) Protein H00003882-P01-10ug

Unit Size: 10 ug

Store at -80C. Avoid freeze-thaw cycles.

www.novusbio.com



technical@novusbio.com

Protocols, Publications, Related Products, Reviews, Research Tools and Images at:
www.novusbio.com/H00003882-P01

Updated 10/23/2024 v.20.1

Earn rewards for product
reviews and publications.

Submit a publication at www.novusbio.com/publications

Submit a review at www.novusbio.com/reviews/destination/H00003882-P01



H00003882-P01-10ug**Recombinant Human KRTHA2 GST (N-Term) Protein**

Product Information	
Unit Size	10 ug
Concentration	Please see the vial label for concentration. If unlisted please contact technical services.
Storage	Store at -80C. Avoid freeze-thaw cycles.
Preservative	No Preservative
Purity	>80% by SDS-PAGE and Coomassie blue staining
Buffer	50 mM Tris-HCl, 10 mM reduced Glutathione, pH 8.0 in the elution buffer.
Target Molecular Weight	76.23 kDa

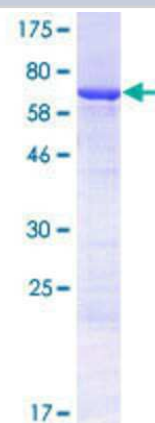
Product Description	
Description	<p>Recombinant protein with GST tag at N-terminal corresponding to the amino acids 1-448 of Human KRT32</p> <p>Source: <i>Wheat Germ (in vitro)</i></p> <p>Amino Acid Sequence: MTSSCCVTNNLQASLKSCPRPASVCSSGVNCRPELCLGYVCQPMACLPSPVCL PTTFRPASCLSKTYLSSSCQAASGISGSMGPGSWYSEGAENGNEKETMQFLN DRLASYLTRVRQLEQENAELESRIQEASHSQVLTMTDPDYQSHFRTIEELQQKIL CTKAENARMVVNIDNAKLAADDFRAKYEAELAMRQLVEADINGLRRILDDLTLC KADLEAQVESLKEELMCLKKNHEEEVGSRLCQLGDRLNIEVDAAPPVDLTRVL EEMRCQYEAMVEANRRDVEEWFNMQMEELNQQVATSSEQLQNYQSDIIDLR RTVNTLEIELQAQHSLRDSLENTLSEARYSSQLAQMQCMITNVEAQLAEIRA DLERQNQEYQVLLDVRARLEGEINTYRSLLNEDCKLPCNPCSTPSCCTTCVPS PCVPRTVCVPRTVGMPCSPCPQGRY</p>
Gene ID	3882
Gene Symbol	KRT32
Species	Human
Preparation Method	in vitro wheat germ expression system
Details of Functionality	This protein was produced in an in vitro wheat germ expression system that should preserve correct conformational folding that is necessary for biological function. While it is possible that this protein could display some level of activity, the functionality of this protein has not been explicitly measured or validated.
Notes	This product is produced by and distributed for Abnova, a company based in Taiwan.

Product Application Details	
Applications	Western Blot, ELISA, Protein Array, SDS-Page, Immunoaffinity Purification
Recommended Dilutions	Western Blot, ELISA, SDS-Page, Protein Array, Immunoaffinity Purification



Images

SDS-Page: Recombinant Human KRTHA2 Protein [H00003882-P01] -
12.5% SDS-PAGE Stained with Coomassie Blue.





Novus Biologicals USA

10730 E. Briarwood Avenue
Centennial, CO 80112
USA
Phone: 303.730.1950
Toll Free: 1.888.506.6887
Fax: 303.730.1966
nb-customerservice@bio-techne.com

Bio-Techne Canada

21 Canmotor Ave
Toronto, ON M8Z 4E6
Canada
Phone: 905.827.6400
Toll Free: 855.668.8722
Fax: 905.827.6402
canada.inquires@bio-techne.com

Bio-Techne Ltd

19 Barton Lane
Abingdon Science Park
Abingdon, OX14 3NB, United Kingdom
Phone: (44) (0) 1235 529449
Free Phone: 0800 37 34 15
Fax: (44) (0) 1235 533420
info.EMEA@bio-techne.com

General Contact Information

www.novusbio.com
Technical Support: nb-technical@bio-techne.com
Orders: nb-customerservice@bio-techne.com
General: novus@novusbio.com

Products Related to H00003882-P01-10ug

NBP1-87466	Muscarinic Acetylcholine Receptor M1/CHRM1 Antibody
H00003882-B01P	KRTHA2 Antibody
NBP1-32870	Exosome component 10 Antibody
NBP1-88370	TYRP1 Antibody

Limitations

This product is for research use only and is not approved for use in humans or in clinical diagnosis. Peptides and proteins are guaranteed for 3 months from date of receipt.

For more information on our 100% guarantee, please visit www.novusbio.com/guarantee

Earn gift cards/discounts by submitting a review: www.novusbio.com/reviews/submit/H00003882-P01

Earn gift cards/discounts by submitting a publication using this product:
www.novusbio.com/publications

