

Product Datasheet

Kininogen Antibody (4A1) H00003827-M02

Unit Size: 0.1 mg

Aliquot and store at -20C or -80C. Avoid freeze-thaw cycles.

www.novusbio.com



technical@novusbio.com

Protocols, Publications, Related Products, Reviews, Research Tools and Images at:
www.novusbio.com/H00003827-M02

Updated 7/16/2023 v.20.1

Earn rewards for product
reviews and publications.

Submit a publication at www.novusbio.com/publications

Submit a review at www.novusbio.com/reviews/destination/H00003827-M02

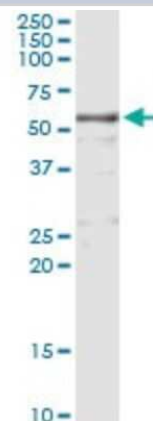


H00003827-M02**Kininogen Antibody (4A1)**

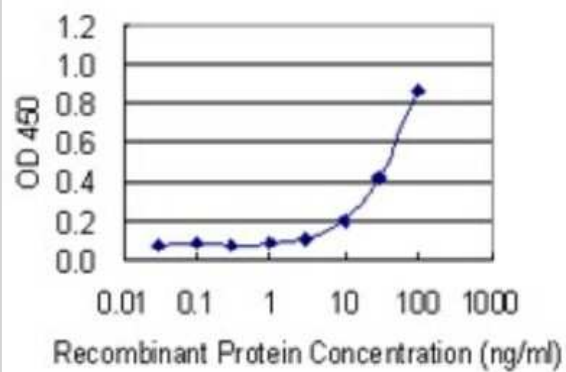
| Product Information | |
|------------------------------------|--|
| Unit Size | 0.1 mg |
| Concentration | Concentrations vary lot to lot. See vial label for concentration. If unlisted please contact technical services. |
| Storage | Aliquot and store at -20C or -80C. Avoid freeze-thaw cycles. |
| Clonality | Monoclonal |
| Clone | 4A1 |
| Preservative | No Preservative |
| Isotype | IgG2a Kappa |
| Purity | IgG purified |
| Buffer | In 1x PBS, pH 7.4 |
| Product Description | |
| Description | Quality control test: Antibody Reactive Against Recombinant Protein. |
| Host | Mouse |
| Gene ID | 3827 |
| Gene Symbol | KNG1 |
| Species | Human |
| Immunogen | Kininogen (NP_000884.1, 322 a.a. ~ 427 a.a) partial recombinant protein with GST tag. MW of the GST tag alone is 26 KDa. VARETTCSKESNEELTESCETKKLGGQSLDCNAEVYVVPWEKKIYPTVNCQPLG MISLMKRPPGFSPFRSSRIGEIKEETTSHLRSCHEYKGRPPKAGAEPASEREVS |
| Notes | This product is produced by and distributed for Abnova, a company based in Taiwan. |
| Product Application Details | |
| Applications | Western Blot, ELISA, Immunoprecipitation, Sandwich ELISA |
| Recommended Dilutions | Western Blot 1:500, ELISA, Immunoprecipitation, Sandwich ELISA |
| Application Notes | Antibody reactivity against Recombinant Protein with GST tag on ELISA and WB. GST tag alone is used as a negative control. |

Images

Immunoprecipitation: HMW Kininogen Antibody (4A1) [H00003827-M02]
- Analysis of KNG1 transfected lysate using anti-KNG1 monoclonal antibody and Protein A Magnetic Bead, and immunoblotted with KNG1 MaxPab rabbit polyclonal antibody.



Sandwich ELISA: HMW Kininogen Antibody (4A1) [H00003827-M02] -
Detection limit for recombinant GST tagged KNG1 is 1 ng/ml as a capture antibody.





Novus Biologicals USA

10730 E. Briarwood Avenue
Centennial, CO 80112
USA

Phone: 303.730.1950
Toll Free: 1.888.506.6887
Fax: 303.730.1966
novus@novusbio.com

Bio-Techne Canada

21 Canmotor Ave
Toronto, ON M8Z 4E6
Canada

Phone: 905.827.6400
Toll Free: 855.668.8722
Fax: 905.827.6402
canada.inquires@bio-techne.com

Bio-Techne Ltd

19 Barton Lane
Abingdon Science Park
Abingdon, OX14 3NB, United Kingdom

Phone: (44) (0) 1235 529449
Free Phone: 0800 37 34 15
Fax: (44) (0) 1235 533420
info.EMEA@bio-techne.com

General Contact Information

www.novusbio.com
Technical Support: technical@novusbio.com
Orders: orders@novusbio.com
General: novus@novusbio.com

Limitations

This product is for research use only and is not approved for use in humans or in clinical diagnosis. Primary Antibodies are guaranteed for 1 year from date of receipt.

For more information on our 100% guarantee, please visit www.novusbio.com/guarantee

Earn gift cards/discounts by submitting a review: www.novusbio.com/reviews/submit/H00003827-M02

Earn gift cards/discounts by submitting a publication using this product:
www.novusbio.com/publications

