

Product Datasheet

Islet-1 Antibody (4A7) H00003670-M02

Unit Size: 0.1 mg

Aliquot and store at -20C or -80C. Avoid freeze-thaw cycles.

www.novusbio.com



technical@novusbio.com

Protocols, Publications, Related Products, Reviews, Research Tools and Images at:
www.novusbio.com/H00003670-M02

Updated 7/16/2023 v.20.1

Earn rewards for product
reviews and publications.

Submit a publication at www.novusbio.com/publications

Submit a review at www.novusbio.com/reviews/destination/H00003670-M02



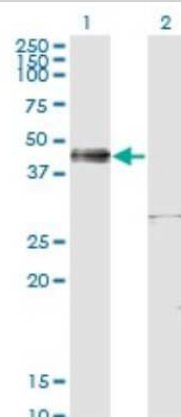
H00003670-M02

Islet-1 Antibody (4A7)

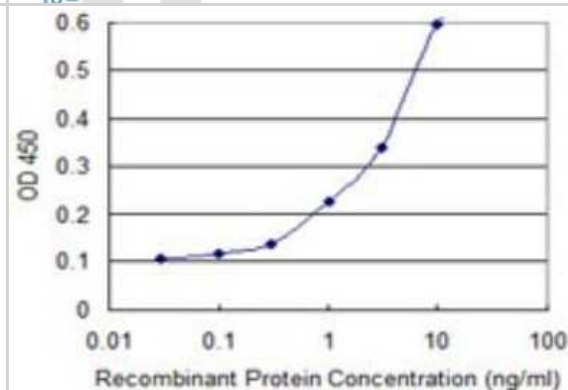
| Product Information | |
|-----------------------------|---|
| Unit Size | 0.1 mg |
| Concentration | Concentrations vary lot to lot. See vial label for concentration. If unlisted please contact technical services. |
| Storage | Aliquot and store at -20C or -80C. Avoid freeze-thaw cycles. |
| Clonality | Monoclonal |
| Clone | 4A7 |
| Preservative | No Preservative |
| Isotype | IgG2b Kappa |
| Purity | IgG purified |
| Buffer | In 1x PBS, pH 7.4 |
| Product Description | |
| Description | Quality control test: Antibody Reactive Against Recombinant Protein. |
| Host | Mouse |
| Gene ID | 3670 |
| Gene Symbol | ISL1 |
| Species | Human |
| Specificity/Sensitivity | ISL1 - ISL1 transcription factor, LIM/homeodomain, (islet-1) |
| Immunogen | ISL1 (NP_002193, 63 a.a. ~ 159 a.a) partial recombinant protein with GST tag. MW of the GST tag alone is 26 KDa. YCKRDYIRLYGIKCAKCSIGFSKNDFVMRARSKVYHIECFRCVACSRQLIPGDEF ALREDGLFCRADHDVVERASLGAGDPLSPLHPARPLQMAAEP |
| Notes | This product is produced by and distributed for Abnova, a company based in Taiwan. |
| Product Application Details | |
| Applications | Western Blot, ELISA, Sandwich ELISA |
| Recommended Dilutions | Western Blot 1:500, ELISA, Sandwich ELISA |
| Application Notes | Antibody reactivity against Recombinant Protein with GST tag on ELISA and WB. GST tag alone is used as a negative control. |

Images

Western Blot: Islet-1 Antibody (4A7) [H00003670-M02] - Analysis of ISL1 expression in transfected 293T cell line by ISL1 monoclonal antibody (M02), clone 4A7. Lane 1: ISL1 transfected lysate(38.7 KDa). Lane 2: Non-transfected lysate.



Sandwich ELISA: Islet-1 Antibody (4A7) [H00003670-M02] - Detection limit for recombinant GST tagged ISL1 is 0.1 ng/ml as a capture antibody.





Novus Biologicals USA

10730 E. Briarwood Avenue
Centennial, CO 80112
USA
Phone: 303.730.1950
Toll Free: 1.888.506.6887
Fax: 303.730.1966
novus@novusbio.com

Bio-Techne Canada

21 Canmotor Ave
Toronto, ON M8Z 4E6
Canada
Phone: 905.827.6400
Toll Free: 855.668.8722
Fax: 905.827.6402
canada.inquires@bio-techne.com

Bio-Techne Ltd

19 Barton Lane
Abingdon Science Park
Abingdon, OX14 3NB, United Kingdom
Phone: (44) (0) 1235 529449
Free Phone: 0800 37 34 15
Fax: (44) (0) 1235 533420
info.EMEA@bio-techne.com

General Contact Information

www.novusbio.com
Technical Support: technical@novusbio.com
Orders: orders@novusbio.com
General: novus@novusbio.com

Limitations

This product is for research use only and is not approved for use in humans or in clinical diagnosis. Primary Antibodies are guaranteed for 1 year from date of receipt.

For more information on our 100% guarantee, please visit www.novusbio.com/guarantee

Earn gift cards/discounts by submitting a review: www.novusbio.com/reviews/submit/H00003670-M02

Earn gift cards/discounts by submitting a publication using this product:
www.novusbio.com/publications

