

Product Datasheet

MHC Class I Antibody H00003133-D01P

Unit Size: 0.1 mg

Aliquot and store at -20C or -80C. Avoid freeze-thaw cycles.

www.novusbio.com



technical@novusbio.com

Protocols, Publications, Related Products, Reviews, Research Tools and Images at:
www.novusbio.com/H00003133-D01P

Updated 6/27/2023 v.20.1

Earn rewards for product
reviews and publications.

Submit a publication at www.novusbio.com/publications

Submit a review at www.novusbio.com/reviews/destination/H00003133-D01P



H00003133-D01P

MHC Class I Antibody

Product Information	
Unit Size	0.1 mg
Concentration	Concentrations vary lot to lot. See vial label for concentration. If unlisted please contact technical services.
Storage	Aliquot and store at -20C or -80C. Avoid freeze-thaw cycles.
Clonality	Polyclonal
Preservative	No Preservative
Isotype	IgG
Purity	Protein A purified
Buffer	PBS (pH 7.4)

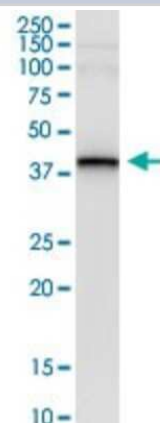
Product Description	
Description	Quality control test: Antibody reactive against mammalian transfected lysate.
Host	Rabbit
Gene ID	3133
Gene Symbol	HLA-E
Species	Human
Specificity/Sensitivity	HLA-E,
Immunogen	HLA-E (AAH02578.1, 1 a.a. - 358 a.a.) full-length human protein. MVDGTL L L L L L S E A L A L T Q T W A G S H S L K Y F H T S V S R P G R G E P R F I S V G Y V D D T Q F V R F D N D A A S P R M V P R A P W M E Q E G S E Y W D R E T R S A R D T A Q I F R V N L R T L R G Y Y N Q S E A G S H T L Q W M H G C E L G P D R R F L R G Y E Q F A Y D G K D Y L T L N E D L R S W T A V D T A A Q I S E Q K S N D A S E A E H Q R A Y L E D T C V E W L H K Y L E K G K E T L L H L E P P K T H V T H H P I S D H E A T L R C W A L G F Y P A E I T L T W Q Q D G E G H T Q D T E L V E T R P A G D G T F Q K W A A V V V P S G E E Q R Y T C H V Q H E G L P E P V T L R W K P A S Q P T I P I V G I I A G L V L L G S V V S G A V V A A V I W R K K S S G G K G G S Y S K A E W S D S A Q G S E S H S L
Notes	This product is produced by and distributed for Abnova, a company based in Taiwan.

Product Application Details	
Applications	Western Blot, Immunoprecipitation
Recommended Dilutions	Western Blot, Immunoprecipitation
Application Notes	It has been used for ELISA and WB.

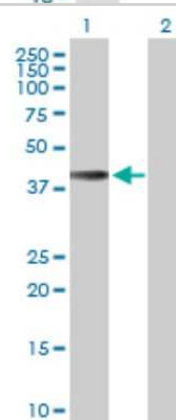


Images

Western Blot: MHC Class I Antibody [H00003133-D01P] - Analysis of HLA-E transfected lysate using anti-HLA-E rabbit polyclonal antibody and Protein Magnetic Bead, and immunoblotted with HLA-E purified mouse polyclonal antibody (B01P).



Western Blot: MHC Class I Antibody [H00003133-D01P] - Analysis of HLA-E expression in transfected 293T cell line by HLA-E polyclonal antibody. Lane 1: HLA-E transfected lysate (40.20 kDa). Lane 2: Non-transfected lysate.





Novus Biologicals USA

10730 E. Briarwood Avenue
Centennial, CO 80112
USA

Phone: 303.730.1950
Toll Free: 1.888.506.6887
Fax: 303.730.1966
novus@novusbio.com

Bio-Techne Canada

21 Canmotor Ave
Toronto, ON M8Z 4E6
Canada

Phone: 905.827.6400
Toll Free: 855.668.8722
Fax: 905.827.6402
canada.inquires@bio-techne.com

Bio-Techne Ltd

19 Barton Lane
Abingdon Science Park
Abingdon, OX14 3NB, United Kingdom
Phone: (44) (0) 1235 529449
Free Phone: 0800 37 34 15
Fax: (44) (0) 1235 533420
info.EMEA@bio-techne.com

General Contact Information

www.novusbio.com
Technical Support: technical@novusbio.com
Orders: orders@novusbio.com
General: novus@novusbio.com

Limitations

This product is for research use only and is not approved for use in humans or in clinical diagnosis. Primary Antibodies are guaranteed for 1 year from date of receipt.

For more information on our 100% guarantee, please visit www.novusbio.com/guarantee

Earn gift cards/discounts by submitting a review: www.novusbio.com/reviews/submit/H00003133-D01P

Earn gift cards/discounts by submitting a publication using this product:
www.novusbio.com/publications

