

# Product Datasheet

## CXCL1/GRO alpha/KC/CINC-1 Antibody (2D7) H00002919-M03

Unit Size: 0.1 mg

Aliquot and store at -20C or -80C. Avoid freeze-thaw cycles.

[www.novusbio.com](http://www.novusbio.com)



[technical@novusbio.com](mailto:technical@novusbio.com)

### Publications: 1

Protocols, Publications, Related Products, Reviews, Research Tools and Images at:  
[www.novusbio.com/H00002919-M03](http://www.novusbio.com/H00002919-M03)

Updated 7/16/2023 v.20.1

Earn rewards for product  
reviews and publications.

Submit a publication at [www.novusbio.com/publications](http://www.novusbio.com/publications)

Submit a review at [www.novusbio.com/reviews/destination/H00002919-M03](http://www.novusbio.com/reviews/destination/H00002919-M03)



**H00002919-M03****CXCL1/GRO alpha/KC/CINC-1 Antibody (2D7)**

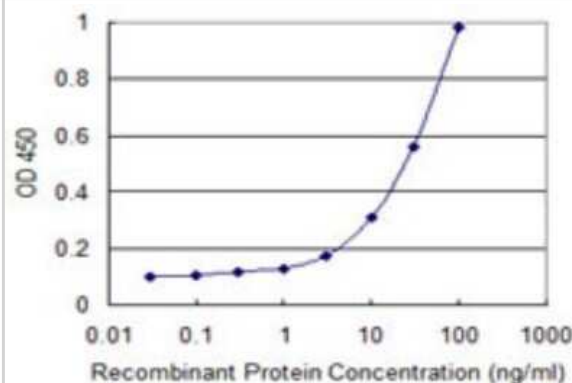
Product Information	
Unit Size	0.1 mg
Concentration	Concentrations vary lot to lot. See vial label for concentration. If unlisted please contact technical services.
Storage	Aliquot and store at -20C or -80C. Avoid freeze-thaw cycles.
Clonality	Monoclonal
Clone	2D7
Preservative	No Preservative
Isotype	IgG2a Kappa
Purity	Protein A purified
Buffer	In 1x PBS, pH 7.4

Product Description	
Description	Quality control test: Antibody Reactive Against Recombinant Protein.
Host	Mouse
Gene ID	2919
Gene Symbol	CXCL1
Species	Human
Specificity/Sensitivity	Reacts with chemokine (C-X-C motif) ligand 1 (melanoma growth stimulating activity, alpha).
Immunogen	CXCL1 (AAH11976, 1 a.a. ~ 107 a.a) full-length recombinant protein with GST tag. MW of the GST tag alone is 26 KDa. MARAAALSAAPSNPRLRLVALLLLLLVAAGRRAAGASVATELRQCQLQTLQGIHP KNIQSVNVKSPGPHCAQTEVIATLKNRKAACLNPAASPIVKKIIKMLNSDKSN
Notes	This product is produced by and distributed for Abnova, a company based in Taiwan.

Product Application Details	
Applications	ELISA, Immunocytochemistry/Immunofluorescence, Sandwich ELISA
Recommended Dilutions	ELISA, Immunocytochemistry/Immunofluorescence, Sandwich ELISA
Application Notes	This antibody is reactive against recombinant protein in ELISA.

**Images**

Sandwich ELISA: CXCL1/GRO alpha/KC/CINC-1 Antibody (2D7) [H00002919-M03] - Detection limit for recombinant GST tagged CXCL1 is 1 ng/ml as a capture antibody.



## Publications

Cuff M, Ruzek MC, Voss JW. et al. Biomarkers for Inflammatory Disease and Methods of Using Same United States Patent Application 2016-01-07



### Novus Biologicals USA

10730 E. Briarwood Avenue  
Centennial, CO 80112  
USA  
Phone: 303.730.1950  
Toll Free: 1.888.506.6887  
Fax: 303.730.1966  
novus@novusbio.com

### Bio-Techne Canada

21 Canmotor Ave  
Toronto, ON M8Z 4E6  
Canada  
Phone: 905.827.6400  
Toll Free: 855.668.8722  
Fax: 905.827.6402  
canada.inquires@bio-techne.com

### Bio-Techne Ltd

19 Barton Lane  
Abingdon Science Park  
Abingdon, OX14 3NB, United Kingdom  
Phone: (44) (0) 1235 529449  
Free Phone: 0800 37 34 15  
Fax: (44) (0) 1235 533420  
info.EMEA@bio-techne.com

### General Contact Information

www.novusbio.com  
Technical Support: technical@novusbio.com  
Orders: orders@novusbio.com  
General: novus@novusbio.com

### Limitations

This product is for research use only and is not approved for use in humans or in clinical diagnosis. Primary Antibodies are guaranteed for 1 year from date of receipt.

For more information on our 100% guarantee, please visit [www.novusbio.com/guarantee](http://www.novusbio.com/guarantee)

Earn gift cards/discounts by submitting a review: [www.novusbio.com/reviews/submit/H00002919-M03](http://www.novusbio.com/reviews/submit/H00002919-M03)

Earn gift cards/discounts by submitting a publication using this product:  
[www.novusbio.com/publications](http://www.novusbio.com/publications)

