

Product Datasheet

GLI-1 Antibody (1G11) H00002735-M02-100ug

Unit Size: 100 ug

Aliquot and store at -20C or -80C. Avoid freeze-thaw cycles.

www.novusbio.com



technical@novusbio.com

Protocols, Publications, Related Products, Reviews, Research Tools and Images at:
www.novusbio.com/H00002735-M02-100ug

Updated 7/16/2023 v.20.1

Earn rewards for product
reviews and publications.

Submit a publication at www.novusbio.com/publications

Submit a review at www.novusbio.com/reviews/destination/H00002735-M02-100ug



H00002735-M02-100ug

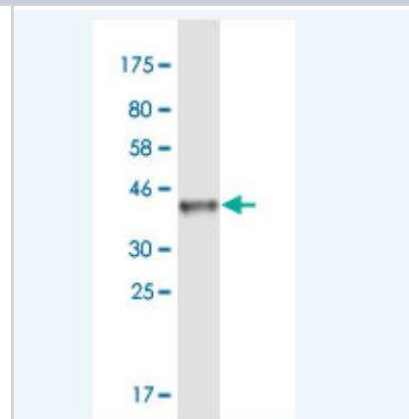
GLI-1 Antibody (1G11)

Product Information	
Unit Size	100 ug
Concentration	Concentrations vary lot to lot. See vial label for concentration. If unlisted please contact technical services.
Storage	Aliquot and store at -20C or -80C. Avoid freeze-thaw cycles.
Clonality	Monoclonal
Clone	1G11
Preservative	No Preservative
Isotype	IgG1 Kappa
Purity	Protein A or G purified
Buffer	In 1x PBS, pH 7.4
Product Description	
Host	Mouse
Gene ID	2735
Gene Symbol	GLI1
Species	Human
Immunogen	GLI1 (AAH13000, 401 a.a. ~ 500 a.a) partial recombinant protein with GST tag. MW of the GST tag alone is 26 KDa. GPLPRAPSISTVEPKREREGGPIREESRLTVPEGAMKPQPSPGAQSSCSDHS PAGSAANTDSGVEMTGNAGGSTEDLSSLDEGPCIAGTGLSTLRLEN
Notes	This product is produced by and distributed for Abnova, a company based in Taiwan.
Product Application Details	
Applications	Western Blot, ELISA, Immunocytochemistry/Immunofluorescence
Recommended Dilutions	Western Blot, ELISA, Immunocytochemistry/Immunofluorescence

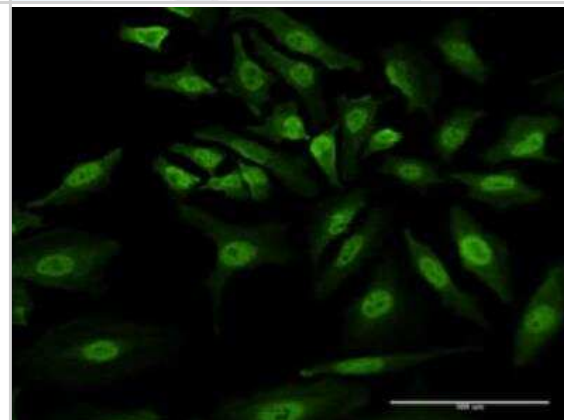


Images

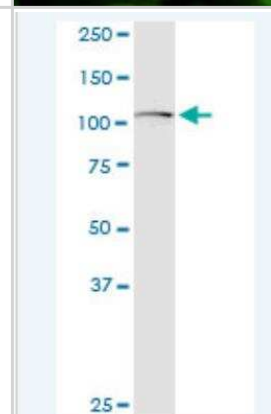
Western Blot: GLI-1 Antibody (1G11) [H00002735-M02-100ug] - Detection against Immunogen (36.74 KDa) .



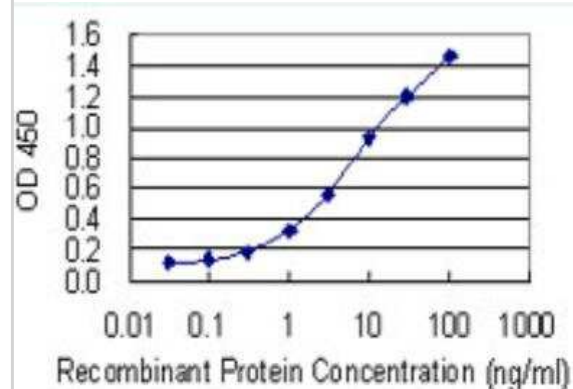
Immunocytochemistry/Immunofluorescence: GLI-1 Antibody (1G11) [H00002735-M02-100ug] - Monoclonal antibody to GLI1 on HeLa cell . [antibody concentration 10 ug/ml]



Western Blot: GLI-1 Antibody (1G11) [H00002735-M02-100ug] - Analysis of GLI1 expression in HeLa.



ELISA: GLI-1 Antibody (1G11) [H00002735-M02-100ug] - Detection limit for recombinant GST tagged GLI1 is 0.03 ng/ml as a capture antibody.





Novus Biologicals USA

10730 E. Briarwood Avenue
Centennial, CO 80112
USA

Phone: 303.730.1950
Toll Free: 1.888.506.6887
Fax: 303.730.1966
novus@novusbio.com

Bio-Techne Canada

21 Canmotor Ave
Toronto, ON M8Z 4E6
Canada

Phone: 905.827.6400
Toll Free: 855.668.8722
Fax: 905.827.6402
canada.inquires@bio-techne.com

Bio-Techne Ltd

19 Barton Lane
Abingdon Science Park
Abingdon, OX14 3NB, United Kingdom
Phone: (44) (0) 1235 529449
Free Phone: 0800 37 34 15
Fax: (44) (0) 1235 533420
info.EMEA@bio-techne.com

General Contact Information

www.novusbio.com
Technical Support: technical@novusbio.com
Orders: orders@novusbio.com
General: novus@novusbio.com

Limitations

This product is for research use only and is not approved for use in humans or in clinical diagnosis.
Primary Antibodies are guaranteed for 1 year from date of receipt.

For more information on our 100% guarantee, please visit www.novusbio.com/guarantee

Earn gift cards/discounts by submitting a review: www.novusbio.com/reviews/submit/H00002735-M02-100ug

Earn gift cards/discounts by submitting a publication using this product:
www.novusbio.com/publications

