

# Product Datasheet

## **Fc epsilon RI beta/MS4A2 Antibody (3B1) - Azide and BSA Free** **H00002206-M02**

Unit Size: 0.1 mg

Aliquot and store at -20C or -80C. Avoid freeze-thaw cycles.

[www.novusbio.com](http://www.novusbio.com)



[technical@novusbio.com](mailto:technical@novusbio.com)

Protocols, Publications, Related Products, Reviews, Research Tools and Images at:  
[www.novusbio.com/H00002206-M02](http://www.novusbio.com/H00002206-M02)

Updated 2/21/2025 v.20.1

Earn rewards for product reviews and publications.

Submit a publication at [www.novusbio.com/publications](http://www.novusbio.com/publications)

Submit a review at [www.novusbio.com/reviews/destination/H00002206-M02](http://www.novusbio.com/reviews/destination/H00002206-M02)



**H00002206-M02**

Fc epsilon RI beta/MS4A2 Antibody (3B1) - Azide and BSA Free

Product Information	
Unit Size	0.1 mg
Concentration	Concentrations vary lot to lot. See vial label for concentration. If unlisted please contact technical services.
Storage	Aliquot and store at -20C or -80C. Avoid freeze-thaw cycles.
Clonality	Monoclonal
Clone	3B1
Preservative	No Preservative
Isotype	IgG2a Kappa
Purity	IgG purified
Buffer	In 1x PBS, pH 7.4

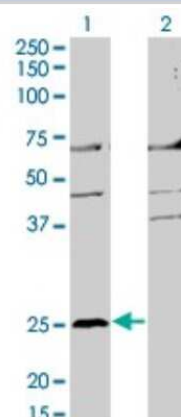
Product Description	
Description	Quality control test: Antibody Reactive Against Recombinant Protein.
Host	Mouse
Gene ID	2206
Gene Symbol	MS4A2
Species	Human
Specificity/Sensitivity	MS4A2 (3B1)
Immunogen	MS4A2 (NP_000130, 1 a.a. ~ 59 a.a) partial recombinant protein with GST tag. MW of the GST tag alone is 26 KDa. MDTESNRRANLALPQEPSSVPAFEVLEISPQEVSSGRLLKSASSPPLHTWLTVLKKEQE
Notes	This product is produced by and distributed for Abnova, a company based in Taiwan.

Product Application Details	
Applications	Western Blot, ELISA, Sandwich ELISA
Recommended Dilutions	Western Blot 1:500, ELISA, Sandwich ELISA
Application Notes	Antibody reactivity against transfected lysate and recombinant protein for WB. It has been used for ELISA.

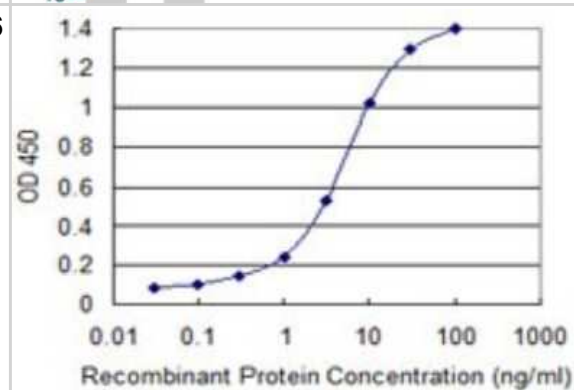


## Images

Western Blot: Fc epsilon RI beta/MS4A2 Antibody (3B1) [H00002206-M02] - Analysis of MS4A2 expression in transfected 293T cell line by MS4A2 monoclonal antibody (M02), clone 3B1. Lane 1: MS4A2 transfected lysate(26.5 KDa). Lane 2: Non-transfected lysate.



Sandwich ELISA: Fc epsilon RI beta/MS4A2 Antibody (3B1) [H00002206-M02] - Detection limit for recombinant GST tagged MS4A2 is 0.1 ng/ml as a capture antibody.





### **Novus Biologicals USA**

10730 E. Briarwood Avenue  
Centennial, CO 80112  
USA  
Phone: 303.730.1950  
Toll Free: 1.888.506.6887  
Fax: 303.730.1966  
nb-customerservice@bio-techne.com

### **Bio-Techne Canada**

21 Canmotor Ave  
Toronto, ON M8Z 4E6  
Canada  
Phone: 905.827.6400  
Toll Free: 855.668.8722  
Fax: 905.827.6402  
canada.inquires@bio-techne.com

### **Bio-Techne Ltd**

19 Barton Lane  
Abingdon Science Park  
Abingdon, OX14 3NB, United Kingdom  
Phone: (44) (0) 1235 529449  
Free Phone: 0800 37 34 15  
Fax: (44) (0) 1235 533420  
info.EMEA@bio-techne.com

### **General Contact Information**

www.novusbio.com  
Technical Support: nb-technical@bio-techne.com  
Orders: nb-customerservice@bio-techne.com  
General: novus@novusbio.com

### **Products Related to H00002206-M02**

HAF007	Goat anti-Mouse IgG Secondary Antibody [HRP]
NB720-B	Rabbit anti-Mouse IgG (H+L) Secondary Antibody [Biotin]
NBP1-96981-0.5mg	Mouse IgG2a Kappa Isotype Control (M2AK)
H00002206-Q01-10ug	Recombinant Human Fc epsilon RI beta/MS4A2 GST (N-Term) Protein

### **Limitations**

This product is for research use only and is not approved for use in humans or in clinical diagnosis. Primary Antibodies are guaranteed for 1 year from date of receipt.

For more information on our 100% guarantee, please visit [www.novusbio.com/guarantee](http://www.novusbio.com/guarantee)

Earn gift cards/discounts by submitting a review: [www.novusbio.com/reviews/submit/H00002206-M02](http://www.novusbio.com/reviews/submit/H00002206-M02)

Earn gift cards/discounts by submitting a publication using this product:  
[www.novusbio.com/publications](http://www.novusbio.com/publications)

