

# Product Datasheet

## Exostosin-like 2/EXTL2 Antibody H00002135-B02P

Unit Size: 0.05 mg

Aliquot and store at -20C or -80C. Avoid freeze-thaw cycles.

[www.novusbio.com](http://www.novusbio.com)



[technical@novusbio.com](mailto:technical@novusbio.com)

Protocols, Publications, Related Products, Reviews, Research Tools and Images at:  
[www.novusbio.com/H00002135-B02P](http://www.novusbio.com/H00002135-B02P)

Updated 6/27/2023 v.20.1

Earn rewards for product  
reviews and publications.

Submit a publication at [www.novusbio.com/publications](http://www.novusbio.com/publications)

Submit a review at [www.novusbio.com/reviews/destination/H00002135-B02P](http://www.novusbio.com/reviews/destination/H00002135-B02P)



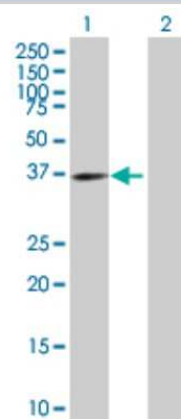
**H00002135-B02P****Exostosin-like 2/EXTL2 Antibody**

| <b>Product Information</b>         |  |
|------------------------------------|--|
| <b>Unit Size</b>                   | 0.05 mg  |
| <b>Concentration</b>               | Concentrations vary lot to lot. See vial label for concentration. If unlisted please contact technical services.   |
| <b>Storage</b>                     | Aliquot and store at -20C or -80C. Avoid freeze-thaw cycles.   |
| <b>Clonality</b>                   | Polyclonal   |
| <b>Preservative</b>                | No Preservative  |
| <b>Isotype</b>                     | IgG  |
| <b>Purity</b>                      | Protein A purified   |
| <b>Buffer</b>                      | PBS (pH 7.4)   |
| <b>Product Description</b>         |  |
| <b>Description</b>                 | Quality control test: Antibody reactive against mammalian transfected lysate.  |
| <b>Host</b>                        | Mouse  |
| <b>Gene ID</b>                     | 2135   |
| <b>Gene Symbol</b>                 | EXTL2  |
| <b>Species</b>                     | Human  |
| <b>Specificity/Sensitivity</b>     | EXTL2 - exostoses (multiple)-like 2,   |
| <b>Immunogen</b>                   | EXTL2 (NP_001028197.1, 1 a.a. - 330 a.a.) full-length human protein.<br>MRCCHICKLPGRVMGIRVLRSLVILVLLLAVAGALTALLPSVKEDKMLMLRREI<br>KSQGKSTMDSFTLIMQTYNRTDLLLKLLNHVQAVPNLHKVIVVWNNIGEKAPDE<br>LWNSLGPHPIPIVIFKQQTANRMRNRLQVFPELETNAVLMVDDDTLISTPDLVFA<br>FSVWQQFPDQIVGFVPRKHVSTSSGIYSYGSFEMQAPGSGNGDQYSMLIGA<br>SFFNSKYLELFQRQPAAVHALIDDTQNCDDIAMNFIIAKHIGKTS GIFVKPVNMD<br>NLEKETNSGYSGMWHRAEHALQRSYCINKLVNIYDSMPLRYSNIMISQFGFPYA<br>NYKRKI |
| <b>Notes</b>                       | This product is produced by and distributed for Abnova, a company based in Taiwan.   |
| <b>Product Application Details</b> |  |
| <b>Applications</b>                | Western Blot   |
| <b>Recommended Dilutions</b>       | Western Blot   |
| <b>Application Notes</b>           | Antibody reactivity against Recombinant Protein with GST tag on ELISA and WB and also on transfected lysate in WB. GST tag alone is used as a negative control.  |



## Images

Western Blot: Exostosin-like 2/EXTL2 Antibody [H00002135-B02P] - Analysis of EXTL2 expression in transfected 293T cell line by EXTL2 polyclonal antibody. Lane 1: EXTL2 transfected lysate(36.3 KDa). Lane 2: Non-transfected lysate.





### **Novus Biologicals USA**

10730 E. Briarwood Avenue  
Centennial, CO 80112  
USA

Phone: 303.730.1950  
Toll Free: 1.888.506.6887  
Fax: 303.730.1966  
novus@novusbio.com

### **Bio-Techne Canada**

21 Canmotor Ave  
Toronto, ON M8Z 4E6  
Canada

Phone: 905.827.6400  
Toll Free: 855.668.8722  
Fax: 905.827.6402  
canada.inquires@bio-techne.com

### **Bio-Techne Ltd**

19 Barton Lane  
Abingdon Science Park  
Abingdon, OX14 3NB, United Kingdom

Phone: (44) (0) 1235 529449  
Free Phone: 0800 37 34 15  
Fax: (44) (0) 1235 533420  
info.EMEA@bio-techne.com

### **General Contact Information**

www.novusbio.com  
Technical Support: technical@novusbio.com  
Orders: orders@novusbio.com  
General: novus@novusbio.com

### **Limitations**

This product is for research use only and is not approved for use in humans or in clinical diagnosis. Primary Antibodies are guaranteed for 1 year from date of receipt.

For more information on our 100% guarantee, please visit [www.novusbio.com/guarantee](http://www.novusbio.com/guarantee)

Earn gift cards/discounts by submitting a review: [www.novusbio.com/reviews/submit/H00002135-B02P](http://www.novusbio.com/reviews/submit/H00002135-B02P)

Earn gift cards/discounts by submitting a publication using this product:  
[www.novusbio.com/publications](http://www.novusbio.com/publications)

