

Product Datasheet

ELAVL4 Antibody (6B9) - Azide and BSA Free H00001996-M01

Unit Size: 0.1 mg

Aliquot and store at -20C or -80C. Avoid freeze-thaw cycles.

www.novusbio.com



technical@novusbio.com

Publications: 1

Protocols, Publications, Related Products, Reviews, Research Tools and Images at:
www.novusbio.com/H00001996-M01

Updated 2/21/2025 v.20.1

Earn rewards for product
reviews and publications.

Submit a publication at www.novusbio.com/publications

Submit a review at www.novusbio.com/reviews/destination/H00001996-M01



H00001996-M01

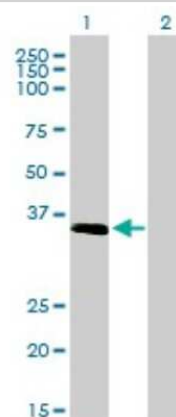
ELAVL4 Antibody (6B9) - Azide and BSA Free

Product Information	
Unit Size	0.1 mg
Concentration	Concentrations vary lot to lot. See vial label for concentration. If unlisted please contact technical services.
Storage	Aliquot and store at -20C or -80C. Avoid freeze-thaw cycles.
Clonality	Monoclonal
Clone	6B9
Preservative	No Preservative
Isotype	IgG1 Kappa
Purity	IgG purified
Buffer	In 1x PBS, pH 7.4
Product Description	
Description	Quality control test: Antibody Reactive Against Recombinant Protein.
Host	Mouse
Gene ID	1996
Gene Symbol	ELAVL4
Species	Human, Mouse, Rat
Specificity/Sensitivity	ELAVL4 - ELAV (embryonic lethal, abnormal vision, Drosophila)-like 4 (Hu antigen D)
Immunogen	ELAVL4 (NP_068771, 312 a.a. ~ 380 a.a) partial recombinant protein with GST tag. MW of the GST tag alone is 26 KDa. VLWQLFGPFGAVNNVKVIRDFNTNKCKGFGFVTMTNYDEAAMAIASLNGYRLG DRVLQVSFKTNKAHKS
Notes	This product is produced by and distributed for Abnova, a company based in Taiwan.
Product Application Details	
Applications	Western Blot, ELISA, Immunocytochemistry/ Immunofluorescence, Immunohistochemistry, Immunohistochemistry-Paraffin, Sandwich ELISA, Knockdown Validated
Recommended Dilutions	Western Blot 1:500, ELISA, Immunohistochemistry 1:10-1:500, Immunocytochemistry/ Immunofluorescence, Immunohistochemistry-Paraffin 1:10-1:500, Sandwich ELISA 1:100-1:2000, Knockdown Validated
Application Notes	Antibody reactivity against cell lysate and recombinant protein for WB. It has also been used for IHC-P, RNAi Validation and ELISA.

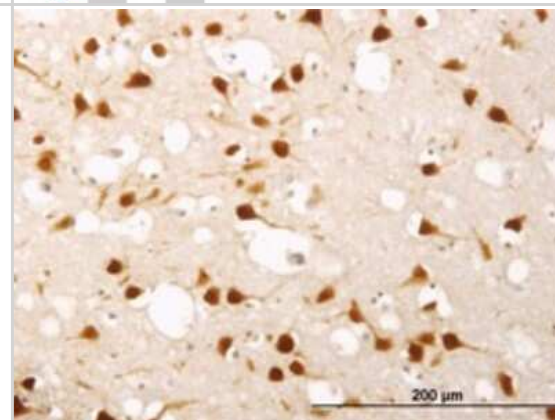


Images

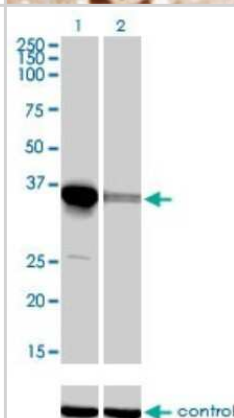
Western Blot: ELAVL4 Antibody (6B9) [H00001996-M01] - Analysis of ELAVL4 expression in transfected 293T cell line by ELAVL4 monoclonal antibody (M01), clone 6B9. Lane 1: ELAVL4 transfected lysate(40.4 KDa). Lane 2: Non-transfected lysate.



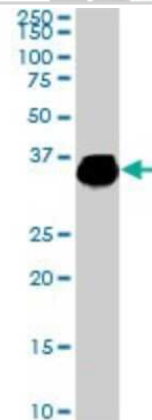
Immunohistochemistry-Paraffin: ELAVL4 Antibody (6B9) [H00001996-M01] - Analysis of monoclonal antibody to ELAVL4 on formalin-fixed paraffin-embedded human cerebral cortex. Antibody concentration 1.2 ug/ml.



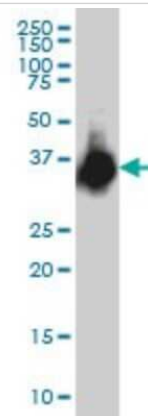
Western Blot: ELAVL4 Antibody (6B9) [H00001996-M01] - Analysis of ELAVL4 over-expressed 293 cell line, cotransfected with ELAVL4 Validated Chimera RNAi (Cat # H00001996-R01V) (Lane 2) or non-transfected control (Lane 1). Blot probed with ELAVL4 monoclonal antibody (M01), clone 6B9 (Cat # H00001996-M01). GAPDH (36.1 kDa) used as specificity and loading control.



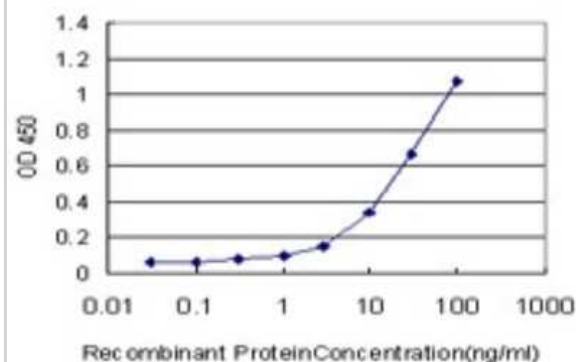
Western Blot: ELAVL4 Antibody (6B9) [H00001996-M01] - ELAVL4 monoclonal antibody (M01), clone 6B9. Analysis of ELAVL4 expression in PC-12.



Western Blot: ELAVL4 Antibody (6B9) [H00001996-M01] - ELAVL4 monoclonal antibody (M01), clone 6B9 Analysis of ELAVL4 expression in IMR-32.



Sandwich ELISA: ELAVL4 Antibody (6B9) [H00001996-M01] - Detection limit for recombinant GST tagged ELAVL4 is approximately 1ng/ml as a capture antibody.



Publications

Blennerhassett MG, Lourenssen SR, Parlow LRG et al. Analgesia and mouse strain influence neuromuscular plasticity in inflamed intestine. *Neurogastroenterol Motil* 2017-05-03 [PMID: 28466581]



Novus Biologicals USA

10730 E. Briarwood Avenue
Centennial, CO 80112
USA
Phone: 303.730.1950
Toll Free: 1.888.506.6887
Fax: 303.730.1966
nb-customerservice@bio-techne.com

Bio-Techne Canada

21 Canmotor Ave
Toronto, ON M8Z 4E6
Canada
Phone: 905.827.6400
Toll Free: 855.668.8722
Fax: 905.827.6402
canada.inquires@bio-techne.com

Bio-Techne Ltd

19 Barton Lane
Abingdon Science Park
Abingdon, OX14 3NB, United Kingdom
Phone: (44) (0) 1235 529449
Free Phone: 0800 37 34 15
Fax: (44) (0) 1235 533420
info.EMEA@bio-techne.com

General Contact Information

www.novusbio.com
Technical Support: nb-technical@bio-
techne.com
Orders: nb-customerservice@bio-techne.com
General: novus@novusbio.com

Error: Subreport could not be shown.

Limitations

This product is for research use only and is not approved for use in humans or in clinical diagnosis. Primary Antibodies are guaranteed for 1 year from date of receipt.

For more information on our 100% guarantee, please visit www.novusbio.com/guarantee

Earn gift cards/discounts by submitting a review: www.novusbio.com/reviews/submit/H00001996-M01

Earn gift cards/discounts by submitting a publication using this product:
www.novusbio.com/publications

