

Product Datasheet

DLX3 Antibody (3B8) - Azide and BSA Free H00001747-M02

Unit Size: 0.1 mg

Aliquot and store at -20C or -80C. Avoid freeze-thaw cycles.

www.novusbio.com



technical@novusbio.com

Publications: 1

Protocols, Publications, Related Products, Reviews, Research Tools and Images at:
www.novusbio.com/H00001747-M02

Updated 2/21/2025 v.20.1

Earn rewards for product
reviews and publications.

Submit a publication at www.novusbio.com/publications

Submit a review at www.novusbio.com/reviews/destination/H00001747-M02



H00001747-M02

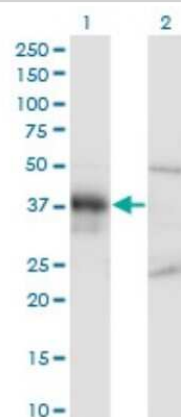
DLX3 Antibody (3B8) - Azide and BSA Free

Product Information	
Unit Size	0.1 mg
Concentration	Concentrations vary lot to lot. See vial label for concentration. If unlisted please contact technical services.
Storage	Aliquot and store at -20C or -80C. Avoid freeze-thaw cycles.
Clonality	Monoclonal
Clone	3B8
Preservative	No Preservative
Isotype	IgG1 Kappa
Purity	IgG purified
Buffer	In 1x PBS, pH 7.4
Product Description	
Description	Quality control test: Antibody Reactive Against Recombinant Protein.
Host	Mouse
Gene ID	1747
Gene Symbol	DLX3
Species	Human
Specificity/Sensitivity	DLX3 (3B8)
Immunogen	DLX3 (AAH12361, 1 a.a. ~ 287 a.a) full-length recombinant protein with GST tag. MW of the GST tag alone is 26 KDa. MSGSFDRKLSSILTDISSSLSCHAGSKDSPTLPESVTDLGYYSA PQHDYYSGQ PYGQTVNPTYHHQFNLNGLAGTGAYSPKSEYTYGASYRQYGAYREQPLPAQ DPVSVKEEPEAEVRMVNGKPKKVRKPRTIYSSYQLAALQRRFQKAQYLALPER AELAAQLGLTQTQVKIWFQNRRSKFKKLYKNGEVPLEHSPNNSDSMACNSPP SPALWDTSSHSTPAPARSQLPPPLPYASPSYLDPTNSWYHAQNLSGPHLQ QQPPQPATLHHASPGPPPNPGAVY
Notes	This product is produced by and distributed for Abnova, a company based in Taiwan.
Product Application Details	
Applications	Western Blot, ELISA
Recommended Dilutions	Western Blot 1:500, ELISA
Application Notes	Antibody reactivity against cell lysate and recombinant protein for WB. It has also been used for ELISA.

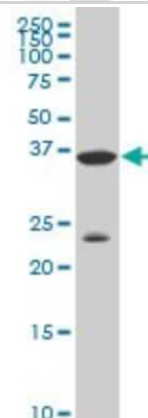


Images

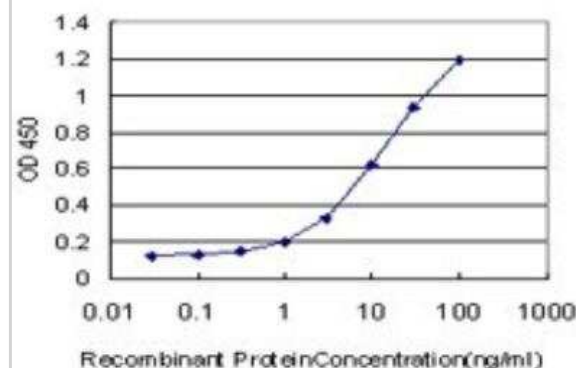
Western Blot: DLX3 Antibody (3B8) [H00001747-M02] - Analysis of DLX3 expression in transfected 293T cell line by DLX3 monoclonal antibody (M02), clone 3B8. Lane 1: DLX3 transfected lysate(31.7 KDa). Lane 2: Non-transfected lysate.



Western Blot: DLX3 Antibody (3B8) [H00001747-M02] - DLX3 monoclonal antibody (M02), clone 3B8 Analysis of DLX3 expression in A-549.



ELISA: DLX3 Antibody (3B8) [H00001747-M02] - Detection limit for recombinant GST tagged DLX3 is approximately 0.3ng/ml as a capture antibody.



Publications

Viale-Bouroncle S, Gosau M, Morscheck C. NOTCH1 signaling regulates the BMP2/DLX-3 directed osteogenic differentiation of dental follicle cells. Biochem Biophys Res Commun. 2013-12-07 [PMID: 24321094]

**Novus Biologicals USA**

10730 E. Briarwood Avenue
Centennial, CO 80112
USA
Phone: 303.730.1950
Toll Free: 1.888.506.6887
Fax: 303.730.1966
nb-customerservice@bio-techne.com

Bio-Techne Canada

21 Canmotor Ave
Toronto, ON M8Z 4E6
Canada
Phone: 905.827.6400
Toll Free: 855.668.8722
Fax: 905.827.6402
canada.inquires@bio-techne.com

Bio-Techne Ltd

19 Barton Lane
Abingdon Science Park
Abingdon, OX14 3NB, United Kingdom
Phone: (44) (0) 1235 529449
Free Phone: 0800 37 34 15
Fax: (44) (0) 1235 533420
info.EMEA@bio-techne.com

General Contact Information

www.novusbio.com
Technical Support: nb-technical@bio-techne.com
Orders: nb-customerservice@bio-techne.com
General: novus@novusbio.com

Products Related to H00001747-M02

HAF007	Goat anti-Mouse IgG Secondary Antibody [HRP]
NB720-B	Rabbit anti-Mouse IgG (H+L) Secondary Antibody [Biotin]
NBP1-43319-0.5mg	Mouse IgG1 Kappa Isotype Control (P3.6.2.8.1)
NBP2-23004	Recombinant Human DLX3 His Protein

Limitations

This product is for research use only and is not approved for use in humans or in clinical diagnosis. Primary Antibodies are guaranteed for 1 year from date of receipt.

For more information on our 100% guarantee, please visit www.novusbio.com/guarantee

Earn gift cards/discounts by submitting a review: www.novusbio.com/reviews/submit/H00001747-M02

Earn gift cards/discounts by submitting a publication using this product:
www.novusbio.com/publications

