

Product Datasheet

GM-CSFR alpha Antibody H00001438-B01P

Unit Size: 0.05 mg

Aliquot and store at -20C or -80C. Avoid freeze-thaw cycles.

www.novusbio.com



technical@novusbio.com

Protocols, Publications, Related Products, Reviews, Research Tools and Images at:
www.novusbio.com/H00001438-B01P

Updated 8/22/2021 v.20.1

Earn rewards for product
reviews and publications.

Submit a publication at www.novusbio.com/publications

Submit a review at www.novusbio.com/reviews/destination/H00001438-B01P



H00001438-B01P

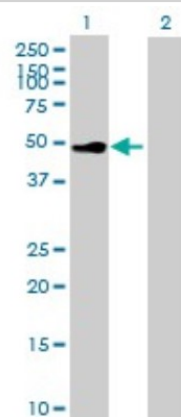
GM-CSFR alpha Antibody

Product Information	
Unit Size	0.05 mg
Concentration	Concentrations vary lot to lot. See vial label for concentration. If unlisted please contact technical services.
Storage	Aliquot and store at -20C or -80C. Avoid freeze-thaw cycles.
Clonality	Polyclonal
Preservative	No Preservative
Isotype	IgG
Purity	Protein A purified
Buffer	PBS (pH 7.4)
Product Description	
Host	Mouse
Gene ID	1438
Gene Symbol	CSF2RA
Species	Human
Specificity/Sensitivity	CSF2RA - colony stimulating factor 2 receptor, alpha, low-affinity (granulocyte-macrophage),
Immunogen	CSF2RA (NP_006131.2, 1 a.a. - 400 a.a.) full-length human protein. MLLLVTSLLLCELPHPAFLLIPEKSDLRTVAPASSLNVRFDSRTMNLWDCQEN TTFKCFLLTDKKNRVVEPRLSNNECSCTFREICLHEGVTFEVHVNTSQRGFQQ KLLYPNSGREGTAAQNFSCFIYNADLMNCTWARGPTAPRDVQYFLYIRNSKRR REIRCPYYIQDSGTHVGCHLDNLSGLTSRNYFLVNGTSREIGIQFFDSLLDTKKI ERFNPPSNVTVRCNTTHCLVRWKQPRTYQKLSYLDFQYQLDVHRKNTQPGTE NLLINVSGDLENRYNFPSSSEPRAKHSVKIRAADVRLNWSWSEAIEFGSDDGN LGSVYIYVLLIVGTLVCGIVLGFLFKRFLRIQRLFPPVPQIKDKLNDNHEVEDEIHW EEFTPEEGKGYREEVLTVEIT
Notes	Quality control test: Antibody reactive against mammalian transfected lysate. This product is produced by and distributed for Abnova, a company based in Taiwan.
Product Application Details	
Applications	Western Blot, Flow Cytometry
Recommended Dilutions	Western Blot 1:500, Flow Cytometry
Application Notes	Antibody reactivity against transfected lysate for WB. It has been used for ELISA and FACS analysis.

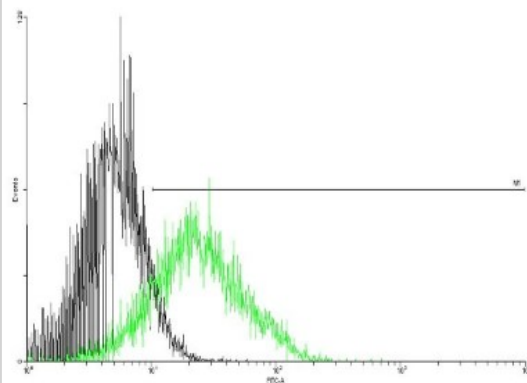


Images

Western Blot: GM-CSFR alpha Antibody [H00001438-B01P] - Analysis of CSF2RA expression in transfected 293T cell line by CSF2RA polyclonal antibody. Lane 1: CSF2RA transfected lysate(44 KDa). Lane 2: Non-transfected lysate.



Flow Cytometry: GM-CSFR alpha Antibody [H00001438-B01P] - Analysis of negative control 293 cells (Black) and CSF2RA expressing 293 cells (Green) using CSF2RA purified mouse polyclonal antibody.





Novus Biologicals USA

10730 E. Briarwood Avenue
Centennial, CO 80112
USA

Phone: 303.730.1950
Toll Free: 1.888.506.6887
Fax: 303.730.1966
novus@novusbio.com

Bio-Techne Canada

21 Canmotor Ave
Toronto, ON M8Z 4E6
Canada

Phone: 905.827.6400
Toll Free: 855.668.8722
Fax: 905.827.6402
canada.inquires@bio-techne.com

Bio-Techne Ltd

19 Barton Lane
Abingdon Science Park
Abingdon, OX14 3NB, United Kingdom

Phone: (44) (0) 1235 529449
Free Phone: 0800 37 34 15
Fax: (44) (0) 1235 533420
info.EMEA@bio-techne.com

General Contact Information

www.novusbio.com
Technical Support: technical@novusbio.com
Orders: orders@novusbio.com
General: novus@novusbio.com

Products Related to H00001438-B01P

HAF007	Goat anti-Mouse IgG Secondary Antibody [HRP (Horseradish Peroxidase)]
NB720-B	Rabbit anti-Mouse IgG (H+L) Secondary Antibody [Biotin]
NBP1-97019-5mg	Mouse IgG Isotype Control
D6050	IL-6 [HRP]

Limitations

This product is for research use only and is not approved for use in humans or in clinical diagnosis. Primary Antibodies are guaranteed for 1 year from date of receipt.

For more information on our 100% guarantee, please visit www.novusbio.com/guarantee

Earn gift cards/discounts by submitting a review: www.novusbio.com/reviews/submit/H00001438-B01P

Earn gift cards/discounts by submitting a publication using this product:
www.novusbio.com/publications

