

Product Datasheet

Creatine Kinase, Muscle/CKMM Antibody (3E1-F3) H00001158-M01-100ug

Unit Size: 100 ug

Aliquot and store at -20C or -80C. Avoid freeze-thaw cycles.

www.novusbio.com



technical@novusbio.com

Protocols, Publications, Related Products, Reviews, Research Tools and Images at:
www.novusbio.com/H00001158-M01

Updated 6/27/2023 v.20.1

**Earn rewards for product
reviews and publications.**

Submit a publication at www.novusbio.com/publications

Submit a review at www.novusbio.com/reviews/destination/H00001158-M01



H00001158-M01-100ug

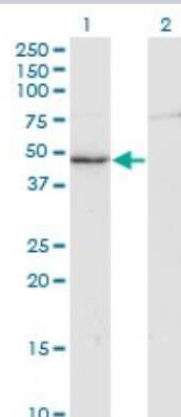
Creatine Kinase, Muscle/CKMM Antibody (3E1-F3)

Product Information	
Unit Size	100 ug
Concentration	This product is unpurified. The exact concentration of antibody is not quantifiable.
Storage	Aliquot and store at -20C or -80C. Avoid freeze-thaw cycles.
Clonality	Monoclonal
Clone	3E1-F3
Preservative	No Preservative
Isotype	IgG1 Kappa
Purity	Ascites
Buffer	In 1x PBS, pH 7.4
Product Description	
Description	Quality control test: Antibody Reactive Against Recombinant Protein.
Host	Mouse
Gene ID	1158
Gene Symbol	CKM
Species	Human
Specificity/Sensitivity	CKM - creatine kinase, muscle (3E1-F3)
Immunogen	CKM (AAH07462, 1 a.a. ~ 381 a.a) full-length recombinant protein with GST tag. MW of the GST tag alone is 26 KDa. MPFGNTHNKFKLNYKPEEEYPDL SKHNNHMAKVLTLELYKKLRDKETPSGFTV DDVIQTGVDNPGHPFIMTVGCVAGDEESYEVFKELFDPIISDCHGGYKPTDKHK TDLNHENLKGGDDLDPNYVLSSRVRTGRSIKGYTLPPHCSRGERRAVEKLSVE ALNSLAGEFKGKYYP LKSMTEKEQQQLIDDHFLDKPVSPLLLASGMARDWPD ARGIWHNDNKSLLVWVNEEDHLRVISMEKGGNMKEVFRRFCVGLQKIEEIFKK AGHPFMWNQHLGYVLTCP SNLGTGLRGGVHVKLAHLSKHPKFEEILTRLRLQK RGTGGVDTA AVGSVFDVSNADRLGSSEVEQVQLVVDGVKLMVEMEKKLEKG QSIDDMIPAQK
Notes	This product is produced by and distributed for Abnova, a company based in Taiwan.
Product Application Details	
Applications	Western Blot, ELISA, Immunoprecipitation
Recommended Dilutions	Western Blot 1:500, ELISA, Immunoprecipitation
Application Notes	Antibody reactivity against Recombinant Protein with GST tag on ELISA and WB. GST tag alone is used as a negative control.

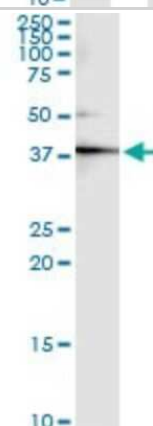


Images

Western Blot: Creatine Kinase, Muscle/CKMM Antibody (3E1-F3) [H00001158-M01] - Analysis of CKM expression in transfected 293T cell line by CKM monoclonal antibody (M01), clone 3E1-F3. Lane 1: CKM transfected lysate (Predicted MW: 43.1 KDa). Lane 2: Non-transfected lysate.



Immunoprecipitation: Creatine Kinase, Muscle/CKMM Antibody (3E1-F3) [H00001158-M01] - Analysis of CKM transfected lysate using anti-CKM monoclonal antibody and Protein A Magnetic Bead, and immunoblotted with CKM MaxPab rabbit polyclonal antibody.





Novus Biologicals USA

10730 E. Briarwood Avenue
Centennial, CO 80112
USA

Phone: 303.730.1950
Toll Free: 1.888.506.6887
Fax: 303.730.1966
novus@novusbio.com

Bio-Techne Canada

21 Canmotor Ave
Toronto, ON M8Z 4E6
Canada

Phone: 905.827.6400
Toll Free: 855.668.8722
Fax: 905.827.6402
canada.inquires@bio-techne.com

Bio-Techne Ltd

19 Barton Lane
Abingdon Science Park
Abingdon, OX14 3NB, United Kingdom
Phone: (44) (0) 1235 529449
Free Phone: 0800 37 34 15
Fax: (44) (0) 1235 533420
info.EMEA@bio-techne.com

General Contact Information

www.novusbio.com
Technical Support: technical@novusbio.com
Orders: orders@novusbio.com
General: novus@novusbio.com

Limitations

This product is for research use only and is not approved for use in humans or in clinical diagnosis. Primary Antibodies are guaranteed for 1 year from date of receipt.

For more information on our 100% guarantee, please visit www.novusbio.com/guarantee

Earn gift cards/discounts by submitting a review: www.novusbio.com/reviews/submit/H00001158-M01

Earn gift cards/discounts by submitting a publication using this product:
www.novusbio.com/publications

