

Product Datasheet

p27/Kip1 Antibody (4B4-E6) - Azide and BSA Free H00001027-M01

Unit Size: 0.1 mg

Aliquot and store at -20C or -80C. Avoid freeze-thaw cycles.

www.novusbio.com



technical@novusbio.com

Publications: 1

Protocols, Publications, Related Products, Reviews, Research Tools and Images at:
www.novusbio.com/H00001027-M01

Updated 2/21/2025 v.20.1

Earn rewards for product
reviews and publications.

Submit a publication at www.novusbio.com/publications

Submit a review at www.novusbio.com/reviews/destination/H00001027-M01



H00001027-M01

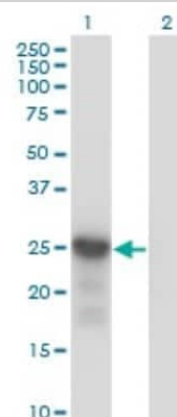
p27/Kip1 Antibody (4B4-E6) - Azide and BSA Free

Product Information	
Unit Size	0.1 mg
Concentration	Concentrations vary lot to lot. See vial label for concentration. If unlisted please contact technical services.
Storage	Aliquot and store at -20C or -80C. Avoid freeze-thaw cycles.
Clonality	Monoclonal
Clone	4B4-E6
Preservative	No Preservative
Isotype	IgG1 Kappa
Purity	IgG purified
Buffer	In 1x PBS, pH 7.4
Product Description	
Description	Quality control test: Antibody Reactive Against Recombinant Protein.
Host	Mouse
Gene ID	1027
Gene Symbol	CDKN1B
Species	Human
Specificity/Sensitivity	CDKN1B - cyclin-dependent kinase inhibitor 1B (p27, Kip1)
Immunogen	CDKN1B (AAH01971, 1 a.a. ~ 198 a.a) full-length recombinant protein with GST tag. MW of the GST tag alone is 26 KDa. MSNVRVSNNGSPSLERMDARQAEHPKPSACRNLFGPVDHEELTRDLEKHCRD MEEASQRKWNFDFQNHKPLEGKYEWQEVEKGSLEFYRPPRPPKGACKVP AQESQDGSGSRPAAPLIGAPANSEDTLHVDPKTDPSDSQTGLAEQCAGIRKRP ATGDSSTQNKRANRTEENVSDGSPNAGSVEQTPKKPGLRRRQT
Notes	This product is produced by and distributed for Abnova, a company based in Taiwan.
Product Application Details	
Applications	Western Blot, ELISA, Immunocytochemistry/ Immunofluorescence, Immunohistochemistry, Immunohistochemistry-Paraffin, Proximity Ligation Assay, Sandwich ELISA
Recommended Dilutions	Western Blot 1:500, ELISA, Immunohistochemistry, Immunocytochemistry/ Immunofluorescence, Immunohistochemistry-Paraffin, Proximity Ligation Assay, Sandwich ELISA
Application Notes	Antibody reactivity against recominant protein and cell lysate for WB. It has also been used for IF, IHC-P and ELISA.

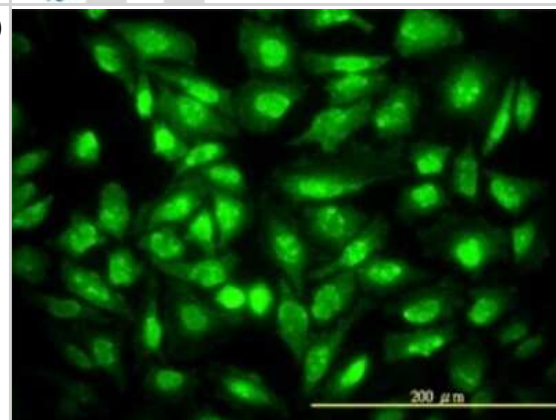


Images

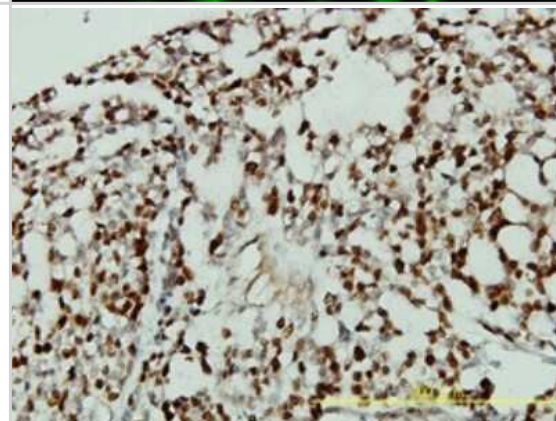
Western Blot: p27/Kip1 Antibody (4B4-E6) [H00001027-M01] - Analysis of CDKN1B expression in transfected 293T cell line by CDKN1B monoclonal antibody (M01), clone 4B4-E6. Lane 1: CDKN1B transfected lysate (22.1 KDa). Lane 2: Non-transfected lysate.



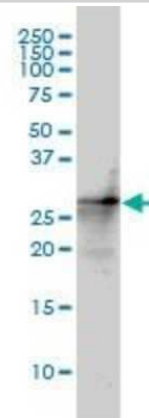
Immunocytochemistry/Immunofluorescence: p27/Kip1 Antibody (4B4-E6) [H00001027-M01] - Analysis of monoclonal antibody to CDKN1B on HeLa cell. Antibody concentration 10 ug/ml.



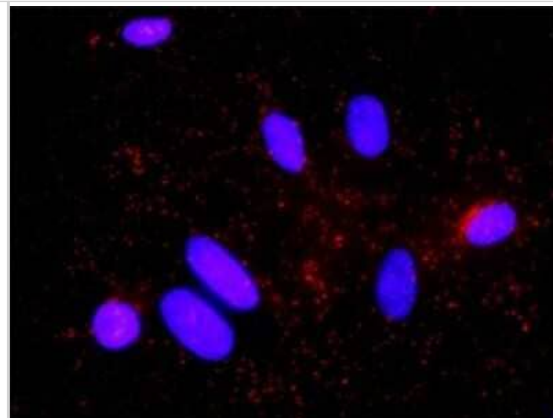
Immunohistochemistry-Paraffin: p27/Kip1 Antibody (4B4-E6) [H00001027-M01] - Analysis of monoclonal antibody to CDKN1B on formalin-fixed paraffin-embedded human ovary, clear cell carcinoma tissue. Antibody concentration 5 ug/ml.



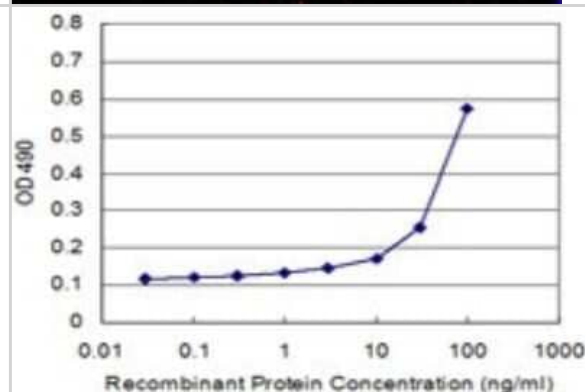
Western Blot: p27/Kip1 Antibody (4B4-E6) [H00001027-M01] - Western Blot analysis of CDKN1B expression in HL-60 (Cat # L014V1).



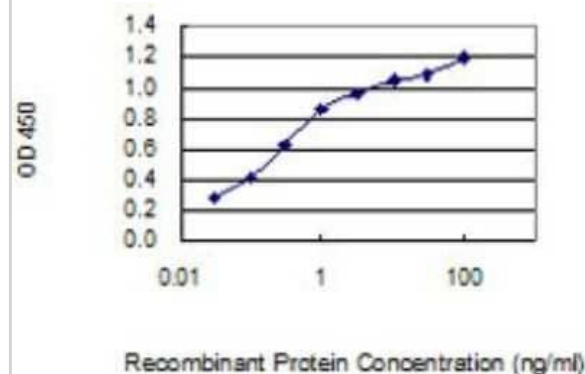
Proximity Ligation Assay: p27/Kip1 Antibody (4B4-E6) [H00001027-M01] - Analysis of protein-protein interactions between AKT1 and CDKN1B. HeLa cells were stained with anti-AKT1 rabbit purified polyclonal 1:1200 and anti-CDKN1B mouse monoclonal antibody 1:50. Each red dot represents the detection of protein-protein interaction complex, and nuclei were counterstained with DAPI (blue).



Sandwich ELISA: p27/Kip1 Antibody (4B4-E6) [H00001027-M01] - Detection limit for recombinant GST tagged CDKN1B is 10 ng/ml as a capture antibody.



Sandwich ELISA: p27/Kip1 Antibody (4B4-E6) [H00001027-M01] - Detection limit for recombinant GST tagged CDKN1B is 0.03 ng/ml as a capture antibody.



Publications

Massimi M, Cardarelli S, Galli F et al. Increase of Intracellular Cyclic Amp by PDE4 Inhibitors Affects HepG2 Cell Cycle Progression and Survival. J Cell Biochem 2016-11-16 [PMID: 27859531]



Novus Biologicals USA

10730 E. Briarwood Avenue
Centennial, CO 80112
USA
Phone: 303.730.1950
Toll Free: 1.888.506.6887
Fax: 303.730.1966
nb-customerservice@bio-techne.com

Bio-Techne Canada

21 Canmotor Ave
Toronto, ON M8Z 4E6
Canada
Phone: 905.827.6400
Toll Free: 855.668.8722
Fax: 905.827.6402
canada.inquires@bio-techne.com

Bio-Techne Ltd

19 Barton Lane
Abingdon Science Park
Abingdon, OX14 3NB, United Kingdom
Phone: (44) (0) 1235 529449
Free Phone: 0800 37 34 15
Fax: (44) (0) 1235 533420
info.EMEA@bio-techne.com

General Contact Information

www.novusbio.com
Technical Support: nb-technical@bio-
techne.com
Orders: nb-customerservice@bio-techne.com
General: novus@novusbio.com

Limitations

This product is for research use only and is not approved for use in humans or in clinical diagnosis.
Primary Antibodies are guaranteed for 1 year from date of receipt.

For more information on our 100% guarantee, please visit www.novusbio.com/guarantee

Earn gift cards/discounts by submitting a review: www.novusbio.com/reviews/submit/H00001027-M01

Earn gift cards/discounts by submitting a publication using this product:
www.novusbio.com/publications

