

Product Datasheet

Cadherin-6/KCAD Antibody (2F2) H00001004-M05

Unit Size: 0.1 mg

Aliquot and store at -20C or -80C. Avoid freeze-thaw cycles.

www.novusbio.com



technical@novusbio.com

Protocols, Publications, Related Products, Reviews, Research Tools and Images at:
www.novusbio.com/H00001004-M05

Updated 7/16/2023 v.20.1

Earn rewards for product
reviews and publications.

Submit a publication at www.novusbio.com/publications

Submit a review at www.novusbio.com/reviews/destination/H00001004-M05



H00001004-M05**Cadherin-6/KCAD Antibody (2F2)**

Product Information	
Unit Size	0.1 mg
Concentration	Concentrations vary lot to lot. See vial label for concentration. If unlisted please contact technical services.
Storage	Aliquot and store at -20C or -80C. Avoid freeze-thaw cycles.
Clonality	Monoclonal
Clone	2F2
Preservative	No Preservative
Isotype	IgG1 Kappa
Purity	IgG purified
Buffer	In 1x PBS, pH 7.4

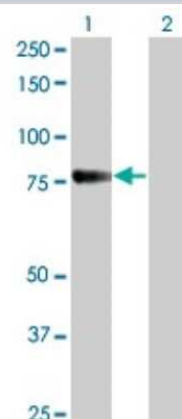
Product Description	
Description	Quality control test: Antibody Reactive Against Recombinant Protein.
Host	Mouse
Gene ID	1004
Gene Symbol	CDH6
Species	Human
Specificity/Sensitivity	CDH6 (2F2)
Immunogen	CDH6 (NP_004923, 513 a.a. ~ 612 a.a) partial recombinant protein with GST tag. MW of the GST tag alone is 26 KDa. DKDDPYSGHQFSFSLAPEAASGSNFTIQDNKDNTAGILTRKNGYNRHEMSTYL LPVVISDNDYPVQSSTGTVTVRVACDHHGNMQSCHAEALIHPTGLS
Notes	This product is produced by and distributed for Abnova, a company based in Taiwan.

Product Application Details	
Applications	Western Blot, ELISA, Knockdown Validated
Recommended Dilutions	Western Blot 1:500, ELISA, Knockdown Validated
Application Notes	Antibody reactivity against transfected lysate and recombinant protein for WB. It has been used for ELISA and RNAi Validation.

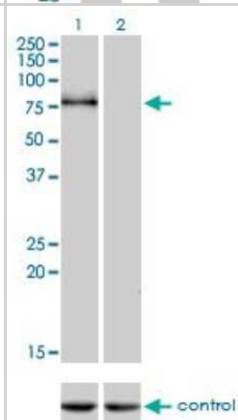


Images

Western Blot: Cadherin-6/KCAD Antibody (2F2) [H00001004-M05] - Analysis of CDH6 expression in transfected 293T cell line by CDH6 monoclonal antibody (M05), clone 2F2. Lane 1: CDH6 transfected lysate (73.9 KDa). Lane 2: Non-transfected lysate.



Western Blot: Cadherin-6/KCAD Antibody (2F2) [H00001004-M05] - Western blot analysis of CDH6 over-expressed 293 cell line. Lane 2 cotransfected with CDH6 Validated Chimera RNAi or non-transfected control. Blot probed with H00001004-M05. GAPDH (36.1 kDa) used as loading control.





Novus Biologicals USA

10730 E. Briarwood Avenue
Centennial, CO 80112
USA

Phone: 303.730.1950
Toll Free: 1.888.506.6887
Fax: 303.730.1966
novus@novusbio.com

Bio-Techne Canada

21 Canmotor Ave
Toronto, ON M8Z 4E6
Canada

Phone: 905.827.6400
Toll Free: 855.668.8722
Fax: 905.827.6402
canada.inquires@bio-techne.com

Bio-Techne Ltd

19 Barton Lane
Abingdon Science Park
Abingdon, OX14 3NB, United Kingdom
Phone: (44) (0) 1235 529449
Free Phone: 0800 37 34 15
Fax: (44) (0) 1235 533420
info.EMEA@bio-techne.com

General Contact Information

www.novusbio.com
Technical Support: technical@novusbio.com
Orders: orders@novusbio.com
General: novus@novusbio.com

Limitations

This product is for research use only and is not approved for use in humans or in clinical diagnosis.
Primary Antibodies are guaranteed for 1 year from date of receipt.

For more information on our 100% guarantee, please visit www.novusbio.com/guarantee

Earn gift cards/discounts by submitting a review: www.novusbio.com/reviews/submit/H00001004-M05

Earn gift cards/discounts by submitting a publication using this product:
www.novusbio.com/publications

