

Product Datasheet

RUNX2/CBFA1 Antibody (4D5)

H00000860-M04

Unit Size: 0.1 mg

Aliquot and store at -20C or -80C. Avoid freeze-thaw cycles.

www.novusbio.com



technical@novusbio.com

Publications: 1

Protocols, Publications, Related Products, Reviews, Research Tools and Images at:
www.novusbio.com/H00000860-M04

Updated 7/16/2023 v.20.1

Earn rewards for product
reviews and publications.

Submit a publication at www.novusbio.com/publications

Submit a review at www.novusbio.com/reviews/destination/H00000860-M04



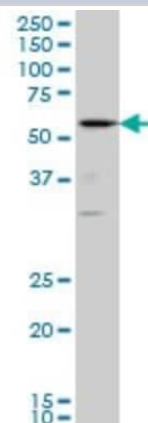
H00000860-M04**RUNX2/CBFA1 Antibody (4D5)**

Product Information	
Unit Size	0.1 mg
Concentration	Concentrations vary lot to lot. See vial label for concentration. If unlisted please contact technical services.
Storage	Aliquot and store at -20C or -80C. Avoid freeze-thaw cycles.
Clonality	Monoclonal
Clone	4D5
Preservative	No Preservative
Isotype	IgG2a Kappa
Purity	Protein A purified
Buffer	In 1x PBS, pH 7.4
Target Molecular Weight	56.6 kDa
Product Description	
Description	Quality control test: Antibody Reactive Against Recombinant Protein.
Host	Mouse
Gene ID	860
Gene Symbol	RUNX2
Species	Human, Rat
Immunogen	RUNX2/CBFA1 (NP_004339, 251 a.a. ~ 350 a.a) partial recombinant protein with GST tag. MW of the GST tag alone is 26 KDa. NPRPSLNSAPSPFNPQGQSQITDPRQAQSSPPWSYDQSYPSYLSQMTSPSIH STTPLSSTRGTGLPAITDVPRRISDDDTATSDFCLWPSTLSKKSQAGA
Notes	This product is produced by and distributed for Abnova, a company based in Taiwan.
Product Application Details	
Applications	Western Blot, ELISA, Immunocytochemistry/Immunofluorescence, Immunohistochemistry, Immunohistochemistry-Paraffin
Recommended Dilutions	Western Blot 1:500, ELISA, Immunohistochemistry 1:10-1:500, Immunocytochemistry/Immunofluorescence 1:10-1:500, Immunohistochemistry-Paraffin 1:10-1:500
Application Notes	Antibody reactivity against cell lysate and recombinant protein for WB. It has also been used for IF, IHC-P and ELISA. Use in Immunohistochemistry reported in scientific literature (PMID: 30147399).

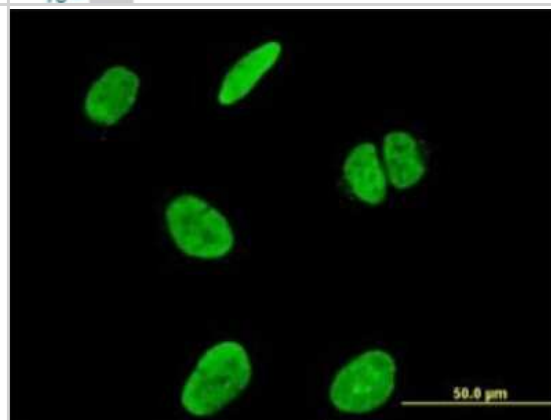


Images

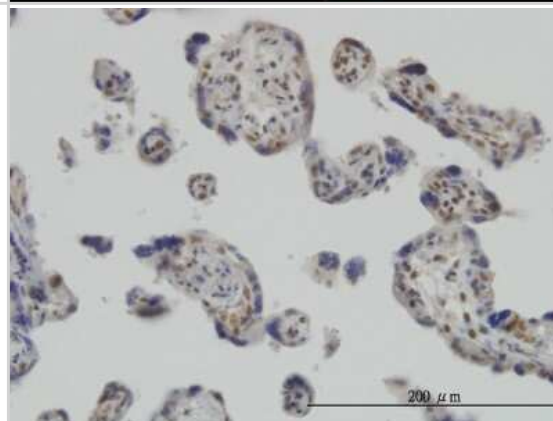
Western Blot: RUNX2/CBFA1 Antibody (4D5) [H00000860-M04] - Analysis of RUNX2 expression in PC-12 (Cat # L012V1).



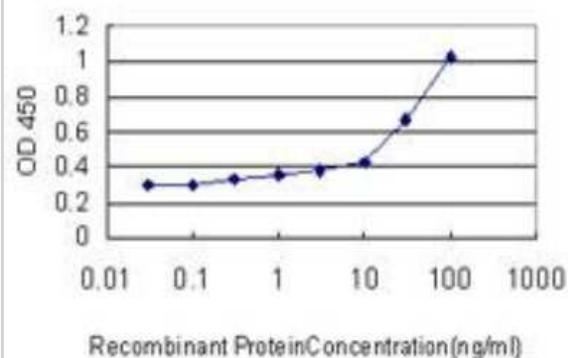
Immunocytochemistry/Immunofluorescence: RUNX2/CBFA1 Antibody (4D5) [H00000860-M04] - Analysis of monoclonal antibody to RUNX2 on U-2 OS cell. Antibody concentration 10 ug/ml



Immunohistochemistry-Paraffin: RUNX2/CBFA1 Antibody (4D5) [H00000860-M04] - Analysis of monoclonal antibody to RUNX2 on formalin-fixed paraffin-embedded human placenta. Antibody concentration 3 ug/ml



ELISA: RUNX2/CBFA1 Antibody (4D5) [H00000860-M04] - Detection limit for recombinant GST tagged RUNX2 is approximately 10ng/ml as a capture antibody.



Publications

Hendrijantini N, Kusumaningsih T, Rostiny R et al. A potential therapy of human umbilical cord mesenchymal stem cells for bone regeneration on osteoporotic mandibular bone Eur J Dent 2018-08-28 [PMID: 30147399] (IF/IHC, Rat)



Novus Biologicals USA

10730 E. Briarwood Avenue
Centennial, CO 80112
USA
Phone: 303.730.1950
Toll Free: 1.888.506.6887
Fax: 303.730.1966
novus@novusbio.com

Bio-Techne Canada

21 Canmotor Ave
Toronto, ON M8Z 4E6
Canada
Phone: 905.827.6400
Toll Free: 855.668.8722
Fax: 905.827.6402
canada.inquires@bio-techne.com

Bio-Techne Ltd

19 Barton Lane
Abingdon Science Park
Abingdon, OX14 3NB, United Kingdom
Phone: (44) (0) 1235 529449
Free Phone: 0800 37 34 15
Fax: (44) (0) 1235 533420
info.EMEA@bio-techne.com

General Contact Information

www.novusbio.com
Technical Support: technical@novusbio.com
Orders: orders@novusbio.com
General: novus@novusbio.com

Limitations

This product is for research use only and is not approved for use in humans or in clinical diagnosis. Primary Antibodies are guaranteed for 1 year from date of receipt.

For more information on our 100% guarantee, please visit www.novusbio.com/guarantee

Earn gift cards/discounts by submitting a review: www.novusbio.com/reviews/submit/H00000860-M04

Earn gift cards/discounts by submitting a publication using this product:
www.novusbio.com/publications

