

# Product Datasheet

## Serpin A3/alpha 1-Antichymotrypsin Antibody Pair H00000012-AP21

Unit Size: 1 Set

Aliquot and store at -20C or -80C. Avoid freeze-thaw cycles.

[www.novusbio.com](http://www.novusbio.com)



[technical@novusbio.com](mailto:technical@novusbio.com)

Reviews: 3

Protocols, Publications, Related Products, Reviews, Research Tools and Images at:  
[www.novusbio.com/H00000012-AP21](http://www.novusbio.com/H00000012-AP21)

Updated 10/23/2024 v.20.1

Earn rewards for product  
reviews and publications.

Submit a publication at [www.novusbio.com/publications](http://www.novusbio.com/publications)

Submit a review at [www.novusbio.com/reviews/destination/H00000012-AP21](http://www.novusbio.com/reviews/destination/H00000012-AP21)



**H00000012-AP21****Serpin A3/alpha 1-Antichymotrypsin Antibody Pair**

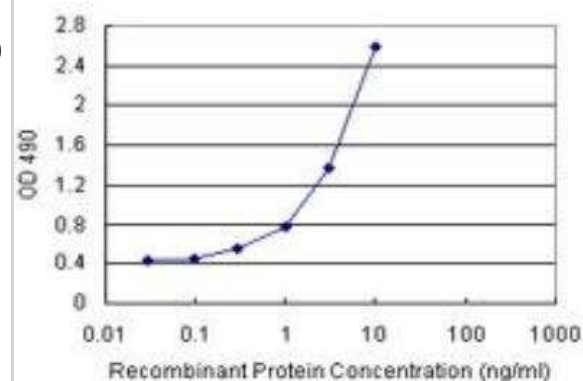
<b>Product Information</b>	
<b>Unit Size</b>	1 Set
<b>Concentration</b>	Concentration of individual antibodies may be found on the vial label. If unlisted please contact technical services.
<b>Storage</b>	Aliquot and store at -20C or -80C. Avoid freeze-thaw cycles.
<b>Buffer</b>	1x PBS, pH 7.4

<b>Product Description</b>	
<b>Description</b>	Quality control test: Standard curve using recombinant protein (H00000012-P02) as an analyte. This antibody pair set comes with matched antibody pair to detect and quantify protein level of human SERPINA3.
<b>Gene ID</b>	12
<b>Gene Symbol</b>	SERPINA3
<b>Species</b>	Human
<b>Kit Components</b>	Capture antibody: rabbit MaxPab affinity purified polyclonal anti-SERPINA3 (100 ug), Detection antibody: mouse purified polyclonal anti-SERPINA3 (20 ug)
<b>Notes</b>	This product is produced by and distributed for Abnova, a company based in Taiwan.
<b>Standard Curve Range</b>	0.03 ng/ml to 100 ng/ml
<b>Assay Type</b>	Sandwich ELISA

<b>Product Application Details</b>	
<b>Applications</b>	Sandwich ELISA
<b>Recommended Dilutions</b>	Sandwich ELISA 0.03 ng/ml - 100 ng/ml
<b>Application Notes</b>	Reagents are sufficient for at least 1-2 x 96 well plates using recommended protocols.

**Images**

Sandwich ELISA: Serpin A3/alpha 1-Antichymotrypsin Antibody Pair [H00000012-AP21] - Detection sensitivity ranging from 0.03 ng/ml to 100 ng/ml.





### **Novus Biologicals USA**

10730 E. Briarwood Avenue  
Centennial, CO 80112  
USA  
Phone: 303.730.1950  
Toll Free: 1.888.506.6887  
Fax: 303.730.1966  
nb-customerservice@bio-techne.com

### **Bio-Techne Canada**

21 Canmotor Ave  
Toronto, ON M8Z 4E6  
Canada  
Phone: 905.827.6400  
Toll Free: 855.668.8722  
Fax: 905.827.6402  
canada.inquires@bio-techne.com

### **Bio-Techne Ltd**

19 Barton Lane  
Abingdon Science Park  
Abingdon, OX14 3NB, United Kingdom  
Phone: (44) (0) 1235 529449  
Free Phone: 0800 37 34 15  
Fax: (44) (0) 1235 533420  
info.EMEA@bio-techne.com

### **General Contact Information**

www.novusbio.com  
Technical Support: nb-technical@bio-techne.com  
Orders: nb-customerservice@bio-techne.com  
General: novus@novusbio.com

### **Products Related to H00000012-AP21**

---

NBP1-90295PEP	Serpin A3/alpha 1-Antichymotrypsin Recombinant Protein Antigen
210-TA-005	TNF-alpha [Unconjugated]
NBP2-52559	Serpin A3/alpha 1-Antichymotrypsin Antibody (5G3C11) - BSA Free
M6000B-1	IL-6 [HRP]

---

### **Limitations**

This product is for research use only and is not approved for use in humans or in clinical diagnosis. Antibody Pairs are guaranteed for 6 months from date of receipt.

For more information on our 100% guarantee, please visit [www.novusbio.com/guarantee](http://www.novusbio.com/guarantee)

Earn gift cards/discounts by submitting a review: [www.novusbio.com/reviews/submit/H00000012-AP21](http://www.novusbio.com/reviews/submit/H00000012-AP21)

Earn gift cards/discounts by submitting a publication using this product:  
[www.novusbio.com/publications](http://www.novusbio.com/publications)

