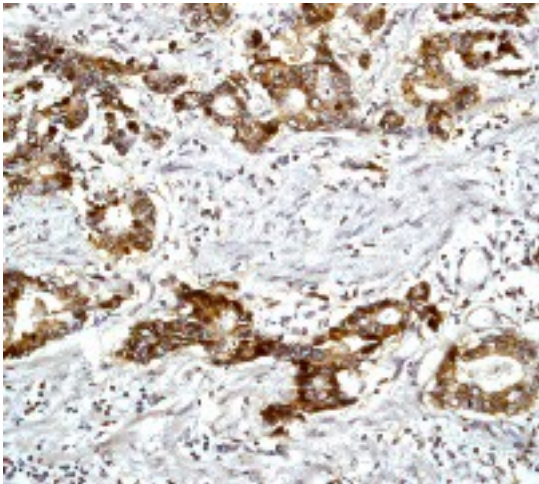


Rabbit Monoclonal anti-Epithelial Antigen (Ep-CAM) (C-term) (E144)

Catalog Number:	NB110-56958
Background:	Epithelial cell adhesion molecule (Ep-CAM) is a monomeric membrane glycoprotein that is expressed on virtually all epithelial cell membranes and on a variety of epithelial carcinomas (1-3). Ep-CAM is overexpressed in a variety of human carcinomas and is, therefore, a potential therapeutic target for human solid tumors (4). Ep-CAM contains an extracellular domain with two epidermal growth factor-like repeats, followed by a cysteine-poor region, which are necessary for the adhesion properties of the molecule (5).
Alternate Names:	anti-Adenocarcinoma associated antigen antibody, anti-CD326 antibody, anti-CD326 antigen antibody, anti-Cell surface glycoprotein Trop 1 antibody, anti-CO17 1A antibody, anti-EGP antibody, anti-EGP40 antibody, anti-Ep CAM antibody, anti-Epithelial cell surface antigen antibody, anti-Epithelial cellular adhesion molecule antibody, anti-Epithelial glycoprotein antibody, anti-GA733 2 antibody, anti-hEGP 2 antibody, anti-KS 1/4 antigen antibody, anti-KSA antibody, anti-Lymphocyte antigen 74 antibody, anti-M1S2 antibody, anti-M4S1 antibody, anti-Major gastrointestinal tumor associated protein GA733 2 antibody, anti-MIC18 antibody, anti-MK 1 antibody, anti-TACSTD1 antibody, anti-TROP1 antibody, anti-Tumor associated calcium signal transducer 1 antibody
Host:	Rabbit
Immunogen:	Synthetic peptide corresponding to residues in the C-terminus of Human EpCAM.
Clone:	E144
Isotype:	IgG
Specificity:	A synthetic peptide corresponding to residues in C-terminus (cytoplasmic domain) of human Ep-CAM was used as immunogen.
Species Reactivity:	Reacts in Human, Mouse, and Rat. Not tested in other species.
Dilutions:	Suggested working dilutions * immunohistochemistry 1:100–250, Western Blot 1:2,500, Immunocytochemistry 1:100, * Investigator should determine optimal working dilutions.
Packaging:	0.1 ml Rabbit ascites.
Buffer:	50 mM Tris-Glycine (pH 7.4), 0.15 M NaCl, 40% Glycerol, and 0.05% BSA.
Preservative:	0.01% sodium azide
Storage:	Aliquot and store at -20C or -80C. Avoid freeze-thaw cycles.
Limitations:	This product is for research use only and is not approved for use in humans or in clinical diagnosis. This product is guaranteed for 6 months from date of receipt.
General References:	1. Tomita, Y., et al. Molecular identification of a human carcinoma-associated glycoprotein antigen recognized by mouse monoclonal antibody FU-MK-1. J. Cancer

Res. 91: 231–238 (2000). 2. Trebak, M., et al. Oligomeric state of the colon carcinoma-associated glycoprotein GA733-2 (Ep-CAM/EGP40) and its role in GA733-mediated homotypic cell-cell adhesion. *J. Biol. Chem.* 276: 2299–2309 (2001). 3. Simon, B., et al. Epithelial glycoprotein is a member of a family of epithelial cell surface antigens homologous to nidogen, a matrix adhesion protein. *Proc Natl Acad Sci U S A.* 87: 2755–9 (1990). 4. Szala, S., et al. Molecular cloning of cDNA for the carcinoma-associated antigen GA733-2. *Proc Natl Acad Sci U S A.* 87: 3542–6 (1990). 5. Balzar, M., et al. Epidermal growth factor-like repeats mediate lateral and reciprocal interactions of Ep-CAM molecules in homophilic adhesions. *Mol. Cell. Biol.* 21: 2570–2580 (2001).

Image(s)



Immunohistochemical analysis of paraffin-embedded stomach carcinoma using anti-Epithelial Antigen (Ep-CAM) (C-term) RabMAb (cat. #110-156958).

