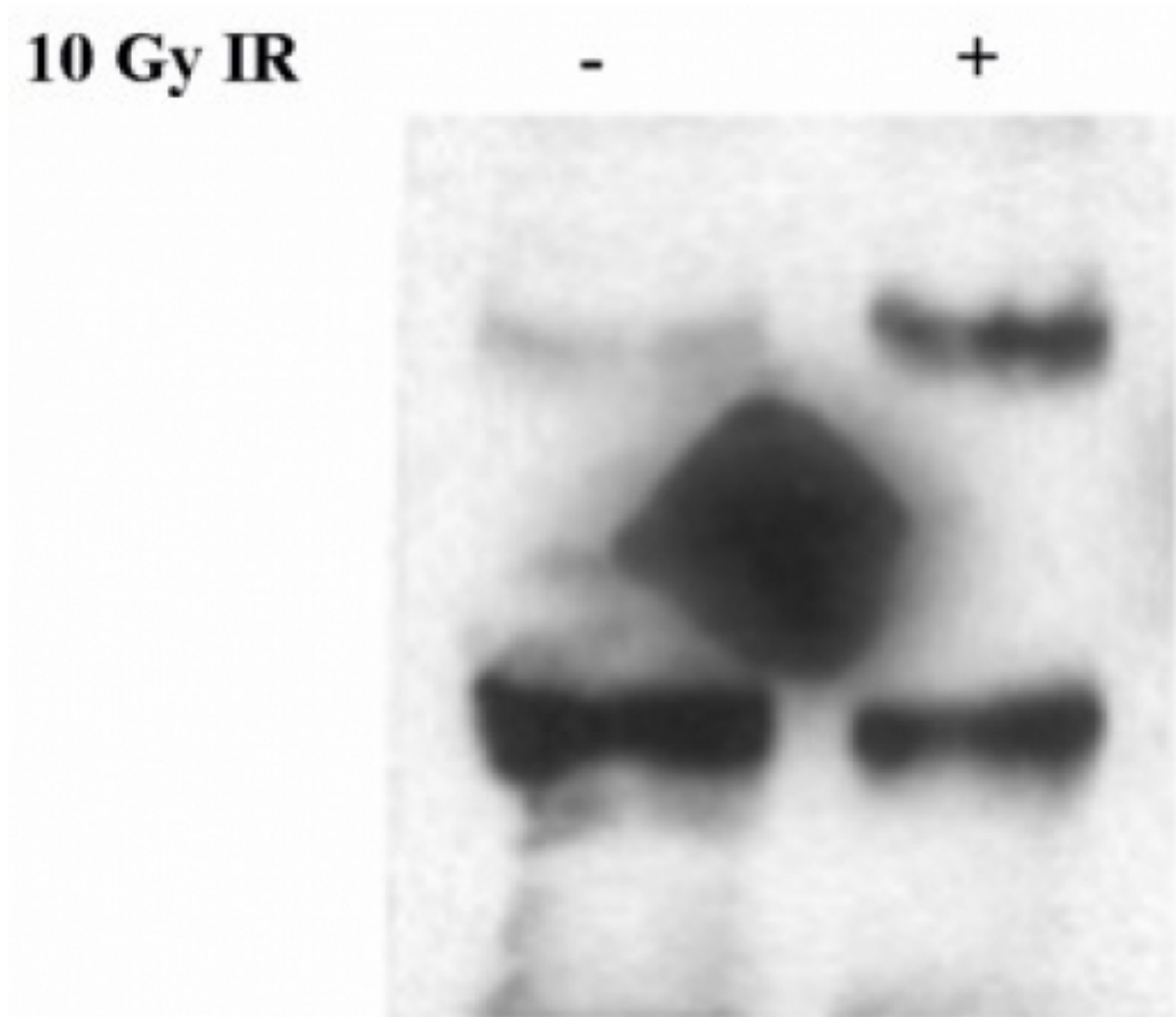


## Rabbit Polyclonal anti-BRCA1 [Ser1189], Sample Size

<b>Catalog Number:</b>	NB100-229SS
<b>Background:</b>	BRCA 1 contains at least two nuclear localization signals and is proposed to be a tumor suppressor protein. It is a serine phosphoprotein that undergoes hyperphosphorylation during late G1 and S phases of the cell cycle and is transiently dephosphorylated early after M phase. BRCA 1 protein alters in a qualitative and quantitative manner during cell cycle progression. The amount of BRCA protein is highest during S phase and remains elevated toward G2 / M, before it declines in early G1 phase. Inherited loss of BRCA 1 function confers an increased susceptibility for both breast and ovarian cancer.
<b>Alternate Names:</b>	anti-Breast Cancer 1 antibody, anti-Breast cancer 1 early onset antibody, anti-Breast cancer type 1 susceptibility protein antibody, anti-Breast Ovarian Cancer Susceptibility antibody, anti-Papillary serous carcinoma of the peritoneum antibody, anti-PSCP antibody, anti-RNF53 antibody
<b>Host:</b>	Rabbit
<b>Research Areas:</b>	Cancer Research, DNA Repair and DNA Damage, Phospho-Specific, DNA double strand break repair
<b>Immunogen:</b>	A phosphorylated synthetic peptide which represents a portion of human Breast Cancer Gene 1 (LocusLink ID 672) around serine 1189.
<b>Specificity:</b>	NB 100-229 reacts with BRCA1
<b>Phosphorylated:</b>	Ser1189
<b>Species Reactivity:</b>	Human.
<b>Uses:</b>	This antibody can be used for Western Blot. Suggested working dilutions: * Western Blot 1:2,000-1:15,000 Immunoprecipitation ND Immunocytochemistry ND Immunohistochemistry ND *The investigator should determine the optimal dilution for a specific application.  * Other applications have not been tested.
<b>Dilutions:</b>	Suggested working dilutions * Western Blot * Investigator should determine optimal working dilutions.
<b>Packaging:</b>	0.025 ml Immunogen affinity purified Rabbit antisera.
<b>Preservative:</b>	0.09% Sodium Azide
<b>Storage:</b>	Store at 4C. Do not freeze.
<b>Notes:</b>	Blocking peptide is available or can be made for this item. Lead time is 3 days to 4 weeks. Price is \$ 150/0.25 ml (or 50 ug). Please enquire availability.
<b>Limitations:</b>	This product is for research use only and is not approved for use in humans or in clinical

diagnosis. This product is guaranteed for 6 months from date of receipt.

**Image(s)**



Detection of Brca1 Phosph Ser 1189 by Western Blot using Rabbit anti-Brca1 pSer1189 (Cat. No. NB100-229SS)