

# Product Datasheet

## PKC iota [p Thr563, p Thr555] Antibody NSB968

Unit Size: 0.1 ml

Store at 4C short term. Aliquot and store at -20C long term. Avoid freeze-thaw cycles.

[www.novusbio.com](http://www.novusbio.com)



[technical@novusbio.com](mailto:technical@novusbio.com)

Protocols, Publications, Related Products, Reviews, Research Tools and Images at:  
[www.novusbio.com/NSB968](http://www.novusbio.com/NSB968)

Updated 2/5/2017 v.20.1

Earn rewards for product  
reviews and publications.

Submit a publication at [www.novusbio.com/publications](http://www.novusbio.com/publications)

Submit a review at [www.novusbio.com/reviews/destination/NSB968](http://www.novusbio.com/reviews/destination/NSB968)



**NSB968****PKC iota [p Thr563, p Thr555] Antibody**

<b>Product Information</b>	
<b>Unit Size</b>	0.1 ml
<b>Concentration</b>	Please see the vial label for concentration. If unlisted please contact technical services.
<b>Storage</b>	Store at 4C short term. Aliquot and store at -20C long term. Avoid freeze-thaw cycles.
<b>Clonality</b>	Polyclonal
<b>Preservative</b>	0.05% Sodium Azide
<b>Purity</b>	Immunogen affinity purified
<b>Buffer</b>	Dulbecco's PBS (pH 7.3), 1.0 mg/ml and 50% Glycerol

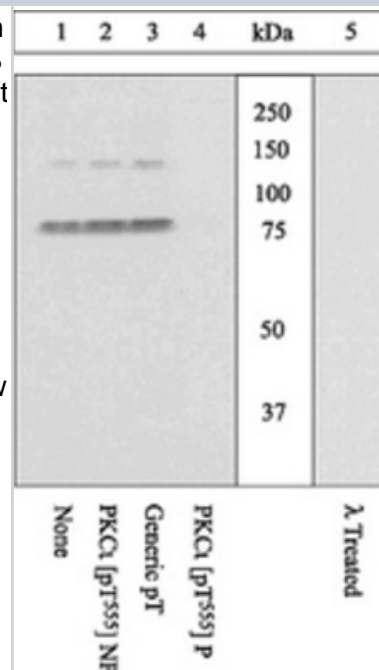
<b>Product Description</b>	
<b>Host</b>	Rabbit
<b>Gene ID</b>	5584
<b>Gene Symbol</b>	PRKCI
<b>Species</b>	Human, Mouse
<b>Reactivity Notes</b>	Cross-reacts with Human and Mouse PKC iota; and human PKC lambda. Not yet tested in other species.
<b>Specificity/Sensitivity</b>	This reacts with PKC lambda immunoprecipitates, indicating cross-reactivity for PKC lambda [pT563]. PKC zeta [pT560] (83% homologous) has been shown to cross-react by peptide competition. Peptide competition also suggests that this may partially cross-react with PKC beta-I [pS642] (58% homologous) and PKC gamma [pT655] (42% homologous).
<b>Immunogen</b>	Synthetic phosphopeptide derived from a region of human PKC iota that contains threonine 555.

<b>Product Application Details</b>	
<b>Applications</b>	Western Blot
<b>Recommended Dilutions</b>	Western Blot
<b>Application Notes</b>	This antibody can be used in Western Blot where a 76 kDa band is seen. Recommended Starting Dilutions*: WB: 1/1000 *Optimal dilutions should be determined by the end user.



## Images

Peptide Competition and Phosphatase Treatment Lysates prepared from Jurkat cells stimulated with PMA were resolved by SDS-PAGE on a 10% polyacrylamide gel and transferred to PVDF. Membranes were either left untreated (1-4) or treated with lambda (l) phosphatase (5), blocked with a 5% low-fat milk-TBST buffer for one hour at room temperature, and incubated with PKCi [pT555] antibody for two hours at room temperature in a 3% low-fat milk-TBST buffer, following prior incubation with: no peptide (1), the non-phosphopeptide corresponding to the immunogen (2), a generic phosphothreonine-containing peptide (3), or, the phosphopeptide immunogen (4). After washing, membranes were incubated with goat F(ab)2 anti-rabbit IgG HRP conjugate and bands were detected using the Pierce SuperSignal(TM) method. The data show that the phosphopeptide corresponding to PKCi [pT555] blocks the antibody signal. The peptide corresponding to PKCz [pT560] blocks the antibody signal and the peptides corresponding to PKC isoforms b1 [pT642] and g [pT655] partially block the antibody signal (data not shown), suggesting cross-reactivity of the antibody with these sites. The antibody signal was not blocked by the corresponding peptides of any other PKC isoforms. The data also show that phosphatase stripping eliminates the signal, verifying that the antibody is phospho-specific.





### **Novus Biologicals USA**

8100 Southpark Way, A-8  
Littleton, CO 80120  
USA

Phone: 303.730.1950  
Toll Free: 1.888.506.6887  
Fax: 303.730.1966  
novus@novusbio.com

### **Novus Biologicals Canada**

461 North Service Road West, Unit B37  
Oakville, ON L6M 2V5  
Canada

Phone: 905.827.6400  
Toll Free: 855.668.8722  
Fax: 905.827.6402  
canada@novusbio.com

### **Novus Biologicals Europe**

19 Barton Lane  
Abingdon Science Park  
Abingdon, OX14 3NB, United Kingdom  
Phone: (44) (0) 1235 529449  
Free Phone: 0800 37 34 15  
Fax: (44) (0) 1235 533420  
info@bio-techne.com

### **General Contact Information**

www.novusbio.com  
Technical Support: technical@novusbio.com  
Orders: orders@novusbio.com  
General: novus@novusbio.com

### **Limitations**

This product is for research use only and is not approved for use in humans or in clinical diagnosis. Primary Antibodies are guaranteed for 1 year from date of receipt.

For more information on our 100% guarantee, please visit [www.novusbio.com/guarantee](http://www.novusbio.com/guarantee)

Earn gift cards/discounts by submitting a review: [www.novusbio.com/reviews/submit/NSB968](http://www.novusbio.com/reviews/submit/NSB968)

Earn gift cards/discounts by submitting a publication using this product:  
[www.novusbio.com/publications](http://www.novusbio.com/publications)

