

# Product Datasheet

## ITCH/AIP4 Antibody NBP1-54608

Unit Size: 100 ul

Store at -20C. Avoid freeze-thaw cycles.

[www.novusbio.com](http://www.novusbio.com)



[technical@novusbio.com](mailto:technical@novusbio.com)

Protocols, Publications, Related Products, Reviews, Research Tools and Images at:  
[www.novusbio.com/NBP1-54608](http://www.novusbio.com/NBP1-54608)

Updated 10/3/2017 v.20.1

Earn rewards for product  
reviews and publications.

Submit a publication at [www.novusbio.com/publications](http://www.novusbio.com/publications)

Submit a review at [www.novusbio.com/reviews/destination/NBP1-54608](http://www.novusbio.com/reviews/destination/NBP1-54608)



**NBP1-54608**

ITCH/AIP4 Antibody

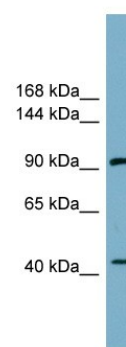
Product Information	
Unit Size	100 ul
Concentration	Please see the vial label for concentration. If unlisted please contact technical services.
Storage	Store at -20C. Avoid freeze-thaw cycles.
Clonality	Polyclonal
Preservative	No Preservative
Purity	Immunogen affinity purified
Buffer	PBS & 2% Sucrose.
Target Molecular Weight	99 kDa

Product Description	
Host	Rabbit
Gene ID	83737
Gene Symbol	ITCH
Species	Human
Immunogen	Synthetic peptides corresponding to ITCH(itchy E3 ubiquitin protein ligase homolog (mouse)) The peptide sequence was selected from the N terminal of ITCH. Peptide sequence QLESEVVTNGETTCSSESASQNDDGSRSKDETRVSTNGSDDPEDAGAGENR.
Notes	The addition of 50% glycerol is optional for those storing this antibody at -20C and not aliquoting smaller units. However, please note that glycerol may interrupt some downstream antibody applications and should be added with caution.

Product Application Details	
Applications	Western Blot
Recommended Dilutions	Western Blot 1:100-1:2000
Application Notes	This is a rabbit polyclonal antibody against ITCH and was validated on Western blot.

**Images**

Western Blot: ITCH Antibody [NBP1-54608] - COLO205 cells lysate, concentration 0.2-1 ug/ml.





### **Novus Biologicals USA**

8100 Southpark Way, A-8  
Littleton, CO 80120  
USA

Phone: 303.730.1950  
Toll Free: 1.888.506.6887  
Fax: 303.730.1966  
novus@novusbio.com

### **Novus Biologicals Canada**

461 North Service Road West, Unit B37  
Oakville, ON L6M 2V5  
Canada

Phone: 905.827.6400  
Toll Free: 855.668.8722  
Fax: 905.827.6402  
canada@novusbio.com

### **Novus Biologicals Europe**

19 Barton Lane  
Abingdon Science Park  
Abingdon, OX14 3NB, United Kingdom

Phone: (44) (0) 1235 529449  
Free Phone: 0800 37 34 15  
Fax: (44) (0) 1235 533420  
info@bio-techne.com

### **General Contact Information**

www.novusbio.com  
Technical Support: technical@novusbio.com  
Orders: orders@novusbio.com  
General: novus@novusbio.com

### **Limitations**

This product is for research use only and is not approved for use in humans or in clinical diagnosis. Primary Antibodies are guaranteed for 1 year from date of receipt.

For more information on our 100% guarantee, please visit [www.novusbio.com/guarantee](http://www.novusbio.com/guarantee)

Earn gift cards/discounts by submitting a review: [www.novusbio.com/reviews/submit/NBP1-54608](http://www.novusbio.com/reviews/submit/NBP1-54608)

Earn gift cards/discounts by submitting a publication using this product:  
[www.novusbio.com/publications](http://www.novusbio.com/publications)

