

# Product Datasheet

## HPI3 Antibody (HIC1-7H10)

### NBP1-18947SS

Unit Size: 0.025 ml

Store at 4C. Do not freeze.

[www.novusbio.com](http://www.novusbio.com)



[technical@novusbio.com](mailto:technical@novusbio.com)

#### Publications: 4

Protocols, Publications, Related Products, Reviews, Research Tools and Images at:  
[www.novusbio.com/NBP1-18947](http://www.novusbio.com/NBP1-18947)

Updated 8/22/2018 v.20.1

Earn rewards for product reviews and publications.

Submit a publication at [www.novusbio.com/publications](http://www.novusbio.com/publications)

Submit a review at [www.novusbio.com/reviews/destination/NBP1-18947](http://www.novusbio.com/reviews/destination/NBP1-18947)



**NBP1-18947SS**

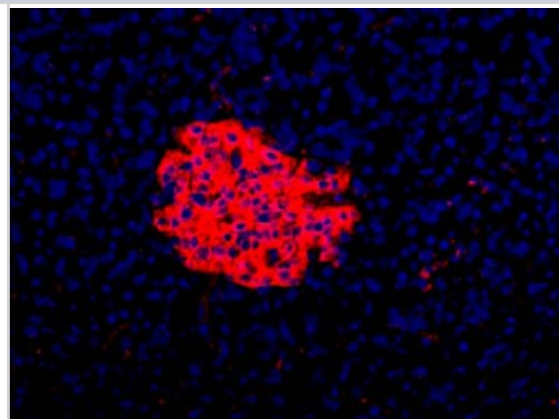
HPi3 Antibody (HIC1-7H10)

<b>Product Information</b>	
<b>Unit Size</b>	0.025 ml
<b>Concentration</b>	This product is unpurified. The exact concentration of antibody is not quantifiable.
<b>Storage</b>	Store at 4C. Do not freeze.
<b>Clonality</b>	Monoclonal
<b>Clone</b>	HIC1-7H10
<b>Preservative</b>	0.09% Sodium Azide
<b>Isotype</b>	IgG1
<b>Purity</b>	Tissue culture supernatant
<b>Buffer</b>	Tissue culture supernatant
<b>Product Description</b>	
<b>Host</b>	Mouse
<b>Species</b>	Human
<b>Reactivity Notes</b>	Human.
<b>Marker</b>	Endocrine pan-islet cell Marker
<b>Specificity/Sensitivity</b>	Specific for multiple endocrine cell types.
<b>Immunogen</b>	Human pancreatic enriched islet cells containing low levels of exocrine and ductal cells.
<b>Notes</b>	The estimated concentration for this antibody is 1.0 mg/ml.
<b>Product Application Details</b>	
<b>Applications</b>	Flow Cytometry, Immunocytochemistry/Immunofluorescence, Immunohistochemistry, Immunohistochemistry-Frozen
<b>Recommended Dilutions</b>	Flow Cytometry 1:50-1:100, Immunohistochemistry 1:100, Immunocytochemistry/Immunofluorescence 1:10-1:500, Immunohistochemistry-Frozen 1:100
<b>Application Notes</b>	This HPi3 (HIC1-7H10) antibody is useful for Immunohistochemistry on acetone fixed frozen sections, Immunocytochemistry/Immunofluorescence and Flow cytometry.

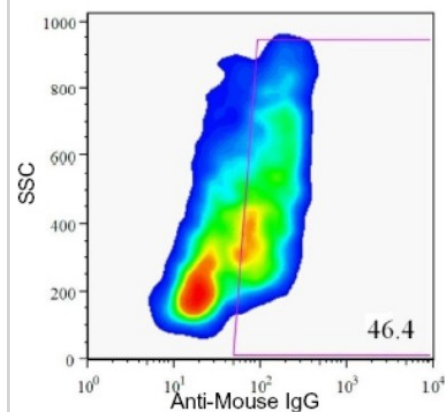


## Images

Immunocytochemistry/Immunofluorescence: HPi3 Antibody (HIC1-7H10) [NBP1-18947] - Immunofluorescence on frozen section of human pancreas.



Flow Cytometry: HPi3 Antibody (HIC1-7H10) [NBP1-18947] - Analysis of enzyme dispersed human pancreas cells.



## Publications

Korytnikov R, Nostro MC. Generation of polyhormonal and multipotent pancreatic progenitor lineages from human pluripotent stem cells. *Methods*. 2015 Oct 27 [PMID: 26515645]

Nostro MC, Sarangi F, Ogawa S et al. Pancreatic differentiation 2008 [PMID: 23658992]

Nostro MC, Sarangi F, Ogawa S, Holtzinger A, Corneo B, Li X, Micallef SJ, Park IH, Basford C, Wheeler MB, Daley GQ, Elefanty AG, Stanley EG, Keller G. Stage-specific signaling through TGFbeta family members and WNT regulates patterning and pancreatic specification of human pluripotent stem cells. *Development*;138(5):861-71. 2011 Mar. [PMID: 21270052] (FLOW , Human)

Dorrell et al. Isolation of major pancreatic cell types and long-term culture-initiating cells using novel human surface markers. *Stem Cell Res*;1(3):183-94. 2008 Sep. [PMID: 19383399] (IHC-Fr, FLOW, Human)



### **Novus Biologicals USA**

8100 Southpark Way, A-8  
Littleton, CO 80120  
USA

Phone: 303.730.1950  
Toll Free: 1.888.506.6887  
Fax: 303.730.1966  
novus@novusbio.com

### **Novus Biologicals Canada**

461 North Service Road West, Unit B37  
Oakville, ON L6M 2V5  
Canada

Phone: 905.827.6400  
Toll Free: 855.668.8722  
Fax: 905.827.6402  
canada@novusbio.com

### **Novus Biologicals Europe**

19 Barton Lane  
Abingdon Science Park  
Abingdon, OX14 3NB, United Kingdom

Phone: (44) (0) 1235 529449  
Free Phone: 0800 37 34 15  
Fax: (44) (0) 1235 533420  
info@bio-techne.com

### **General Contact Information**

www.novusbio.com  
Technical Support: technical@novusbio.com  
Orders: orders@novusbio.com  
General: novus@novusbio.com

### **Limitations**

This product is for research use only and is not approved for use in humans or in clinical diagnosis. Primary Antibodies are guaranteed for 1 year from date of receipt.

For more information on our 100% guarantee, please visit [www.novusbio.com/guarantee](http://www.novusbio.com/guarantee)

Earn gift cards/discounts by submitting a review: [www.novusbio.com/reviews/submit/NBP1-18947](http://www.novusbio.com/reviews/submit/NBP1-18947)

Earn gift cards/discounts by submitting a publication using this product:  
[www.novusbio.com/publications](http://www.novusbio.com/publications)

