

Product Datasheet

GTF3C6 Overexpression Lysate (Native) NBL1-11397

Unit Size: 0.1 mg

Store at -80C. Avoid freeze-thaw cycles.

www.novusbio.com



technical@novusbio.com

Protocols, Publications, Related Products, Reviews, Research Tools and Images at:
www.novusbio.com/NBL1-11397

Updated 9/6/2018 v.20.1

Earn rewards for product
reviews and publications.

Submit a publication at www.novusbio.com/publications

Submit a review at www.novusbio.com/reviews/destination/NBL1-11397

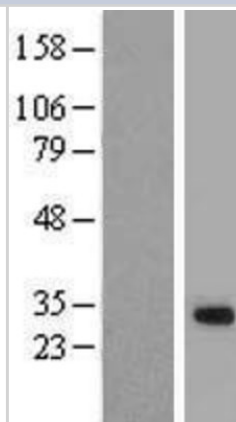


NBL1-11397**GTF3C6 Overexpression Lysate (Native)**

| Product Information | |
|------------------------------------|--|
| Unit Size | 0.1 mg |
| Concentration | The exact concentration of the protein of interest cannot be determined for overexpression lysates. Please contact technical support for more information. |
| Storage | Store at -80C. Avoid freeze-thaw cycles. |
| Buffer | RIPA buffer |
| Target Molecular Weight | 23.9 kDa |
| Product Description | |
| Gene ID | 112495 |
| Gene Symbol | GTF3C6 |
| Species | Human |
| Specificity/Sensitivity | Homo sapiens general transcription factor III C, polypeptide 6, alpha 35kDa (GTF3C6), mRNA. |
| Immunogen | The lysate was created in HEK293T cells, using plasmid ID RC204285 and based on accession number NM_138408. The protein contains a C-terminal DDK tag. |
| Notes | HEK293T cells in 10-cm dishes were transiently transfected with a non-lipid polymer transfection reagent specially designed and manufactured for large volume DNA transfection. Transfected cells were cultured for 48hrs before collection. The cells were lysed in modified RIPA buffer (25mM Tris-HCl pH7.6, 150mM NaCl, 1% NP-40, 1mM EDTA, 1xProteinase inhibitor cocktail mix, 1mM PMSF and 1mM Na3VO4, and then centrifuged to clarify the lysate. Protein concentration was measured by BCA protein assay kit. This product is manufactured by and sold under license from OriGene Technologies and its use is limited solely for research purposes. |
| Lysate Type | Overexpression |
| Lysate Protein State | Native |
| Product Application Details | |
| Applications | Western Blot |
| Recommended Dilutions | Western Blot |
| Application Notes | This product is intended for use as a positive control in Western Blot. You will receive the lysate (100ug), and an empty vector negative control (100 ug). |

Images

Western Blot: GTF3C6 Overexpression Lysate (Adult Normal) [NBL1-11397] Left-Empty vector transfected control cell lysate (HEK293 cell lysate); Right -Over-expression Lysate for GTF3C6.





Novus Biologicals USA

10730 E. Briarwood Avenue
Centennial, CO 80112
USA

Phone: 303.730.1950
Toll Free: 1.888.506.6887
Fax: 303.730.1966
novus@novusbio.com

Novus Biologicals Canada

461 North Service Road West, Unit B37
Oakville, ON L6M 2V5
Canada

Phone: 905.827.6400
Toll Free: 855.668.8722
Fax: 905.827.6402
canada@novusbio.com

Novus Biologicals Europe

19 Barton Lane
Abingdon Science Park
Abingdon, OX14 3NB, United Kingdom

Phone: (44) (0) 1235 529449
Free Phone: 0800 37 34 15
Fax: (44) (0) 1235 533420
info@bio-techne.com

General Contact Information

www.novusbio.com
Technical Support: technical@novusbio.com
Orders: orders@novusbio.com
General: novus@novusbio.com

Products Related to NBL1-11397

| | |
|---------------|------------------------------------|
| NBP2-31628PEP | GTF3C6 Recombinant Protein Antigen |
| NB100-60657 | TFIIIC Antibody |
| NBP2-31851 | GTF3C6 Antibody |
| NBP2-49504 | GTF3C5 Antibody |

Limitations

This product is for research use only and is not approved for use in humans or in clinical diagnosis. Lysates are guaranteed for 6 months from date of receipt.

For more information on our 100% guarantee, please visit www.novusbio.com/guarantee

Earn gift cards/discounts by submitting a review: www.novusbio.com/reviews/submit/NBL1-11397

Earn gift cards/discounts by submitting a publication using this product:
www.novusbio.com/publications

