

# Product Datasheet

## Human Colon Whole Tissue Lysate (Adult Whole Normal) NB820-59205

Unit Size: 1 mg

Store at -80C. Avoid freeze-thaw cycles.

[www.novusbio.com](http://www.novusbio.com)



[technical@novusbio.com](mailto:technical@novusbio.com)

**Reviews: 1**

Protocols, Publications, Related Products, Reviews, Research Tools and Images at:  
[www.novusbio.com/NB820-59205](http://www.novusbio.com/NB820-59205)

Updated 8/18/2016 v.20.1

**Earn rewards for product  
reviews and publications.**

Submit a publication at [www.novusbio.com/publications](http://www.novusbio.com/publications)

Submit a review at [www.novusbio.com/reviews/destination/NB820-59205](http://www.novusbio.com/reviews/destination/NB820-59205)



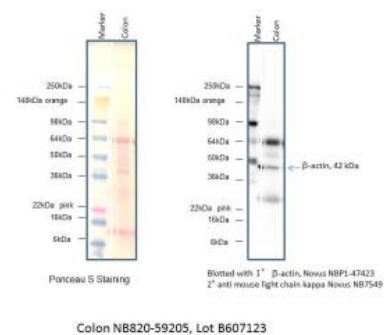
**NB820-59205**

Human Colon Whole Tissue Lysate (Adult Whole Normal)

<b>Product Information</b>	
<b>Unit Size</b>	1 mg
<b>Concentration</b>	5.0 mg/ml
<b>Storage</b>	Store at -80C. Avoid freeze-thaw cycles.
<b>Buffer</b>	HEPES, pH 7.9, MgCl <sub>2</sub> , KCL, EDTA, Sucrose, Glycerol, Sodium deoxycholate, NP-40 and a cocktail of protease inhibitors.
<b>Product Description</b>	
<b>Species</b>	Human
<b>Specificity/Sensitivity</b>	Total Protein - Human Adult Normal Tissue: Colon
<b>Notes</b>	We recommend adding 1 x sample buffer with 5% BME (or other reducing agent) prior to use.
<b>Lysate Type</b>	Tissue
<b>Lysate Tissue</b>	Digestive/Waste
<b>Lysate Tissue Condition</b>	Normal
<b>Lysate Life Stage</b>	Adult
<b>Lysate Protein State</b>	Native
<b>Lysate Subcellular Fraction</b>	Whole
<b>Product Application Details</b>	
<b>Applications</b>	Western Blot, Immunoprecipitation
<b>Recommended Dilutions</b>	Western Blot, Immunoprecipitation
<b>Application Notes</b>	Western Blot, Immunoprecipitation, Electrophoresis, Enzymatic activity analysis, Protein-protein interaction, Tissue specific expression

## Images

Western Blot: Human Colon Whole Tissue Lysate (Adult Normal) [NB820-59205] - analysis of Beta Actin in human colon tissue lysate (20ug) using Beta Actin antibody (Cat.# NBP1-47423) followed by goat anti-mouse kappa light chain HRP conjugated secondary antibody (Cat.#NB7549). Image from verified customer review.



SDS-Page: Human Colon Whole Tissue Lysate (Whole Normal) [NB820-59205]





### **Novus Biologicals USA**

8100 Southpark Way, A-8  
Littleton, CO 80120  
USA

Phone: 303.730.1950  
Toll Free: 1.888.506.6887  
Fax: 303.730.1966  
novus@novusbio.com

### **Novus Biologicals Canada**

461 North Service Road West, Unit B37  
Oakville, ON L6M 2V5  
Canada

Phone: 905.827.6400  
Toll Free: 855.668.8722  
Fax: 905.827.6402  
canada@novusbio.com

### **Novus Biologicals Europe**

19 Barton Lane  
Abingdon Science Park  
Abingdon, OX14 3NB, United Kingdom  
Phone: (44) (0) 1235 529449  
Free Phone: 0800 37 34 15  
Fax: (44) (0) 1235 533420  
info@bio-techne.com

### **General Contact Information**

www.novusbio.com  
Technical Support: technical@novusbio.com  
Orders: orders@novusbio.com  
General: novus@novusbio.com

### **Products Related to NB820-59205**

---

NBP2-30256	Human Colon Tissue MicroArray (Rectal Cancer)
------------	---

---

#### **Limitations**

This product is for research use only and is not approved for use in humans or in clinical diagnosis. Lysates are guaranteed for 6 months from date of receipt.

For more information on our 100% guarantee, please visit [www.novusbio.com/guarantee](http://www.novusbio.com/guarantee)

Earn gift cards/discounts by submitting a review: [www.novusbio.com/reviews/submit/NB820-59205](http://www.novusbio.com/reviews/submit/NB820-59205)

Earn gift cards/discounts by submitting a publication using this product:  
[www.novusbio.com/publications](http://www.novusbio.com/publications)

