

# Product Datasheet

## SERCA1 ATPase Antibody (VE121G9) NB300-622

Unit Size: 100uL

Store at -20C. Avoid freeze-thaw cycles.

[www.novusbio.com](http://www.novusbio.com)



[technical@novusbio.com](mailto:technical@novusbio.com)

Protocols, Publications, Related Products, Reviews, Research Tools and Images at:  
[www.novusbio.com/NB300-622](http://www.novusbio.com/NB300-622)

Updated 9/5/2022 v.20.1

Earn rewards for product  
reviews and publications.

Submit a publication at [www.novusbio.com/publications](http://www.novusbio.com/publications)

Submit a review at [www.novusbio.com/reviews/destination/NB300-622](http://www.novusbio.com/reviews/destination/NB300-622)

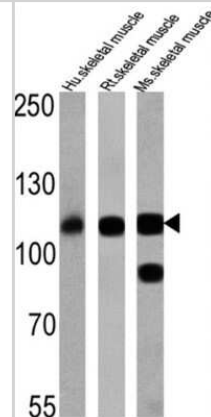


**NB300-622****SERCA1 ATPase Antibody (VE121G9)**

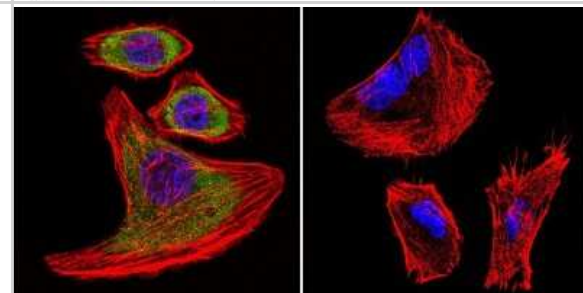
<b>Product Information</b>	
<b>Unit Size</b>	100uL
<b>Concentration</b>	This product is unpurified. The exact concentration of antibody is not quantifiable.
<b>Storage</b>	Store at -20C. Avoid freeze-thaw cycles.
<b>Clonality</b>	Monoclonal
<b>Clone</b>	VE121G9
<b>Preservative</b>	0.05% Sodium Azide
<b>Isotype</b>	IgG1
<b>Purity</b>	Unpurified
<b>Buffer</b>	Ascites diluted with PBS
<b>Product Description</b>	
<b>Host</b>	Mouse
<b>Gene ID</b>	487
<b>Gene Symbol</b>	ATP2A1
<b>Species</b>	Human, Mouse, Rat, Amphibian, Canine, Rabbit
<b>Reactivity Notes</b>	Please note that this antibody is reactive to Mouse and derived from the same host, Mouse. Additional Mouse on Mouse blocking steps may be required for IHC and ICC experiments. Please contact Technical Support for more information.
<b>Specificity/Sensitivity</b>	Detects Sarcoplasmic or Endoplasmic Reticulum Calcium 1 (SERCA 1) ATPase.
<b>Immunogen</b>	Purified rabbit skeletal muscle sarcoplasmic reticulum.
<b>Product Application Details</b>	
<b>Applications</b>	Western Blot, Immunocytochemistry/ Immunofluorescence, Immunohistochemistry, Immunohistochemistry-Frozen, Immunohistochemistry-Paraffin
<b>Recommended Dilutions</b>	Western Blot 1:500 - 1:5000, Immunohistochemistry 1:20, Immunocytochemistry/ Immunofluorescence 1:500, Immunohistochemistry-Paraffin 1:10 - 1:500, Immunohistochemistry-Frozen 1:10 - 1:500
<b>Application Notes</b>	WB: Detects an approx. 110 kDa protein representing SERCA 1 ATPase in mouse muscle extracts. IF: Staining of SERCA 1 ATPase in canine skeletal muscle results in strong labeling of the entire type II (fast) myofiber. This antibody has also been shown to inhibit the crystallization of SERCA ATPase induced by vanadate.

## Images

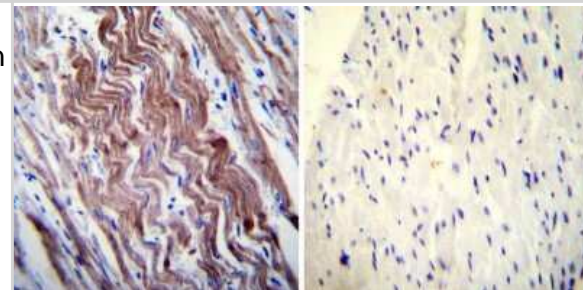
Western Blot: SERCA1 ATPase Antibody (VE121G9) [NB300-622] - Analysis of 25 ug of human skeletal muscle (lane 1), rat skeletal muscle (lane 2) and mouse skeletal muscle (lane 3).



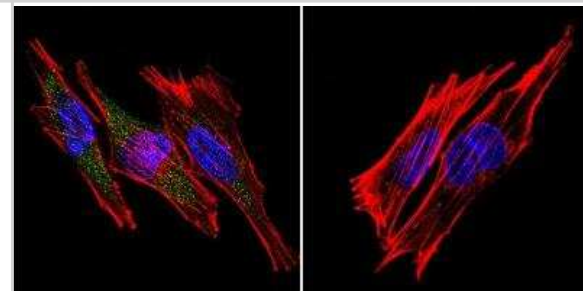
Immunocytochemistry/Immunofluorescence: SERCA1 ATPase Antibody (VE121G9) [NB300-622] - SERCA1 ATPase staining (green), F-Actin staining with Phalloidin (red) and nuclei with DAPI (blue) is shown. Cells were grown on chamber slides and fixed with formaldehyde prior to staining. Cells were probed without (control) or with or an antibody recognizing SERCA1 ATPase at a dilution of 1:20 over night at 4C, washed with PBS and incubated with a DyLight-488 conjugated.



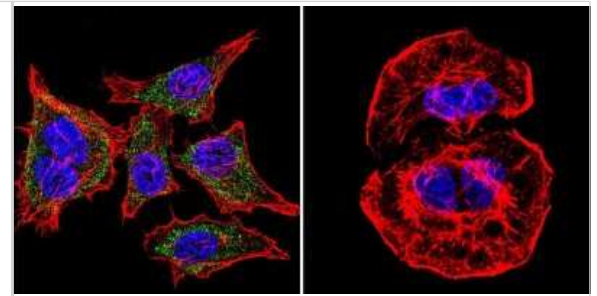
Immunohistochemistry-Paraffin: SERCA1 ATPase Antibody (VE121G9) [NB300-622] - Both normal and cancer biopsies of deparaffinized Human heart tissue tissues.



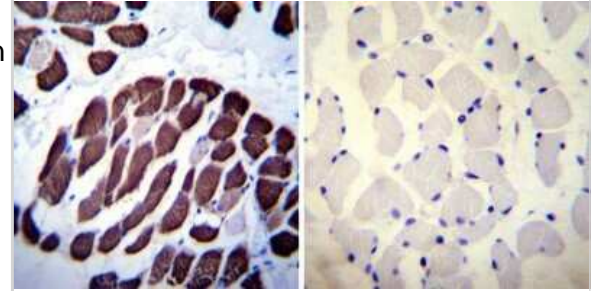
Immunocytochemistry/Immunofluorescence: SERCA1 ATPase Antibody (VE121G9) [NB300-622] - SERCA1 ATPase staining (green), F-Actin staining with Phalloidin (red) and nuclei with DAPI (blue) is shown. Cells were grown on chamber slides and fixed with formaldehyde prior to staining. Cells were probed without (control) or with or an antibody recognizing SERCA1 ATPase at a dilution of 1:20 over night at 4C, washed with PBS and incubated with a DyLight-488 conjugated.



Immunocytochemistry/Immunofluorescence: SERCA1 ATPase Antibody (VE121G9) [NB300-622] - SERCA1 ATPase staining (green), F-Actin staining with Phalloidin (red) and nuclei with DAPI (blue) is shown. Cells were grown on chamber slides and fixed with formaldehyde prior to staining. Cells were probed without (control) or with or an antibody recognizing SERCA1 ATPase at a dilution of 1:20 over night at 4C, washed with PBS and incubated with a DyLight-488 conjugated.



Immunohistochemistry-Paraffin: SERCA1 ATPase Antibody (VE121G9) [NB300-622] - Both normal and cancer biopsies of deparaffinized Human skeletal muscle tissues.





### **Novus Biologicals USA**

10730 E. Briarwood Avenue  
Centennial, CO 80112  
USA  
Phone: 303.730.1950  
Toll Free: 1.888.506.6887  
Fax: 303.730.1966  
nb-customerservice@bio-techne.com

### **Bio-Techne Canada**

21 Canmotor Ave  
Toronto, ON M8Z 4E6  
Canada  
Phone: 905.827.6400  
Toll Free: 855.668.8722  
Fax: 905.827.6402  
canada.inquires@bio-techne.com

### **Bio-Techne Ltd**

19 Barton Lane  
Abingdon Science Park  
Abingdon, OX14 3NB, United Kingdom  
Phone: (44) (0) 1235 529449  
Free Phone: 0800 37 34 15  
Fax: (44) (0) 1235 533420  
info.EMEA@bio-techne.com

### **General Contact Information**

www.novusbio.com  
Technical Support: nb-technical@bio-techne.com  
Orders: nb-customerservice@bio-techne.com  
General: novus@novusbio.com

### **Limitations**

This product is for research use only and is not approved for use in humans or in clinical diagnosis. Primary Antibodies are guaranteed for 1 year from date of receipt.

For more information on our 100% guarantee, please visit [www.novusbio.com/guarantee](http://www.novusbio.com/guarantee)

Earn gift cards/discounts by submitting a review: [www.novusbio.com/reviews/submit/NB300-622](http://www.novusbio.com/reviews/submit/NB300-622)

Earn gift cards/discounts by submitting a publication using this product:  
[www.novusbio.com/publications](http://www.novusbio.com/publications)

