

Product Datasheet

Abeta 40 Antibody NB300-225SS

Unit Size: 0.025 ml

Aliquot and store at -20C or -80C. Avoid freeze-thaw cycles.

www.novusbio.com



technical@novusbio.com

Publications: 2

Protocols, Publications, Related Products, Reviews, Research Tools and Images at:
www.novusbio.com/NB300-225

Updated 5/16/2022 v.20.1

Earn rewards for product
reviews and publications.

Submit a publication at www.novusbio.com/publications

Submit a review at www.novusbio.com/reviews/destination/NB300-225



NB300-225SS

Abeta 40 Antibody

Product Information	
Unit Size	0.025 ml
Concentration	This product is unpurified. The exact concentration of antibody is not quantifiable.
Storage	Aliquot and store at -20C or -80C. Avoid freeze-thaw cycles.
Clonality	Polyclonal
Preservative	0.05% Sodium Azide
Isotype	IgG
Purity	Unpurified
Buffer	Whole antisera

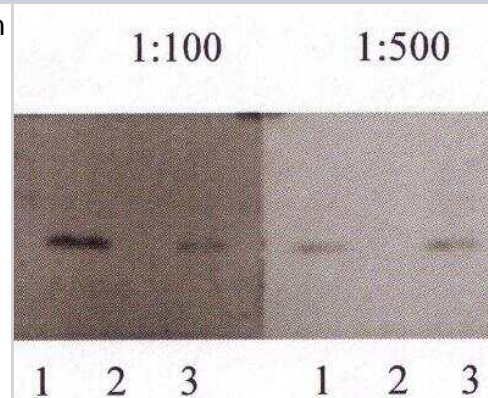
Product Description	
Host	Rabbit
Gene ID	351
Gene Symbol	APP
Species	Human, Mouse
Reactivity Notes	Human and mouse.
Specificity/Sensitivity	Specific for Abeta 40; there is no cross-reactivity with Abeta 42.
Immunogen	A synthetic peptide corresponding to amino acid residues GLMVGGVV of human Abeta [UniProt# P05067]

Product Application Details	
Applications	Western Blot, Immunocytochemistry/Immunofluorescence, Immunoprecipitation
Recommended Dilutions	Western Blot 1:500-1:1000, Immunocytochemistry/Immunofluorescence 1:1000, Immunoprecipitation 1:100
Application Notes	This Abeta 40 antibody is useful for Western blot, Immunoprecipitation and Immunocytochemistry/Immunofluorescence.

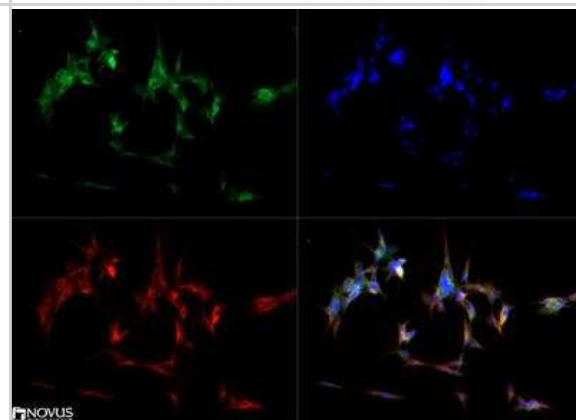


Images

Western Blot: Abeta 40 Antibody [NB300-225] - Detection of Abeta 40 on 5 ng of peptide per lane using NB300-225. Lane 1: Abeta 40, lane 2: Abeta 42, Lane 3: Abeta 40 and 42 mix.



Immunocytochemistry/Immunofluorescence: Abeta 40 Antibody [NB300-225] - The Abeta 40 antibody was tested in SH-SY5Y cells at a 1:1000 dilution against Dylight 488 (Green). Alpha tubulin and nuclei were counterstained against Dylight 550 (Red) and DAPI (Blue), respectively.



Publications

Ezpeleta J, Baudouin V, Arellano-Anaya ZE et al. Production of seedable Amyloid-beta peptides in model of prion diseases upon PrPSc-induced PDK1 overactivation Nat Commun 2019-08-01 [PMID: 31371707] (IP, Mouse)

Pradines E, Hernandez-Rapp J, Villa-Diaz A et al. Pathogenic prions deviate PrP(C) signaling in neuronal cells and impair A-beta clearance Cell Death Dis 2013-01-10 [PMID: 23303130] (IP, Mouse)



Novus Biologicals USA

10730 E. Briarwood Avenue
Centennial, CO 80112
USA
Phone: 303.730.1950
Toll Free: 1.888.506.6887
Fax: 303.730.1966
nb-customerservice@bio-techne.com

Bio-Techne Canada

21 Canmotor Ave
Toronto, ON M8Z 4E6
Canada
Phone: 905.827.6400
Toll Free: 855.668.8722
Fax: 905.827.6402
canada.inquires@bio-techne.com

Bio-Techne Ltd

19 Barton Lane
Abingdon Science Park
Abingdon, OX14 3NB, United Kingdom
Phone: (44) (0) 1235 529449
Free Phone: 0800 37 34 15
Fax: (44) (0) 1235 533420
info.EMEA@bio-techne.com

General Contact Information

www.novusbio.com
Technical Support: nb-technical@bio-techne.com
Orders: nb-customerservice@bio-techne.com
General: novus@novusbio.com

Limitations

This product is for research use only and is not approved for use in humans or in clinical diagnosis. Primary Antibodies are guaranteed for 1 year from date of receipt.

For more information on our 100% guarantee, please visit www.novusbio.com/guarantee

Earn gift cards/discounts by submitting a review: www.novusbio.com/reviews/submit/NB300-225

Earn gift cards/discounts by submitting a publication using this product:
www.novusbio.com/publications

