

# Product Datasheet

## Sheep anti-Human IgG (H+L) Secondary Antibody [Alkaline Phosphatase] NB120-6871

Unit Size: 1 mg

Store at 4C. Do not freeze.

[www.novusbio.com](http://www.novusbio.com)



[technical@novusbio.com](mailto:technical@novusbio.com)

Protocols, Publications, Related Products, Reviews, Research Tools and Images at:  
[www.novusbio.com/NB120-6871](http://www.novusbio.com/NB120-6871)

Updated 12/4/2017 v.20.1

Earn rewards for product reviews and publications.

Submit a publication at [www.novusbio.com/publications](http://www.novusbio.com/publications)

Submit a review at [www.novusbio.com/reviews/destination/NB120-6871](http://www.novusbio.com/reviews/destination/NB120-6871)



**NB120-6871**

Sheep anti-Human IgG (H+L) Secondary Antibody [Alkaline Phosphatase]

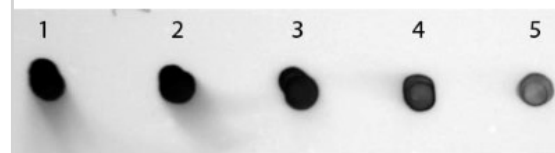
Product Information	
Unit Size	1 mg
Concentration	Please see the vial label for concentration. If unlisted please contact technical services.
Storage	Store at 4C. Do not freeze.
Clonality	Polyclonal
Preservative	0.01% Sodium Azide
Isotype	IgG
Conjugate	Alkaline Phosphatase
Purity	Immunogen affinity purified
Buffer	0.05 M Tris Chloride, 0.15M Sodium Chloride, 0.001M Magnesium Chloride, 0.0001M Zinc Chloride, 50% (v/v) Glycerol; pH 8.0, 10 mg/mL Bovine Serum Albumin (BSA) - Immunoglobulin and Protease free

Product Description	
Host	Sheep
Species	Human
Reactivity Notes	Reacts with human.
Specificity/Sensitivity	Assay by immunoelectrophoresis resulted in a single precipitin arc against anti-Alkaline Phosphatase (calf intestine), anti-Sheep Serum, Human IgG and Human Serum.
Immunogen	Human IgG whole molecule

Product Application Details	
Applications	Western Blot, Dot Blot, ELISA, Immunohistochemistry, Immunohistochemistry-Paraffin
Recommended Dilutions	Western Blot 1:500 - 1:2500, ELISA 1:2000 - 1:10000, Immunohistochemistry 1:200 - 1:1000, Immunohistochemistry-Paraffin, Dot Blot

**Images**

Dot Blot: Sheep anti-Human IgG Secondary Antibody [Alkaline Phosphatase] [NB120-6871] - Human IgG. Load: Lane 1 - 200 ng Lane 2 - 66.67 ng Lane 3 - 22.22 ng Lane 4 - 7.41 ng Lane 5 - 2.47 ng.





### **Novus Biologicals USA**

8100 Southpark Way, A-8  
Littleton, CO 80120  
USA

Phone: 303.730.1950  
Toll Free: 1.888.506.6887  
Fax: 303.730.1966  
novus@novusbio.com

### **Novus Biologicals Canada**

461 North Service Road West, Unit B37  
Oakville, ON L6M 2V5  
Canada

Phone: 905.827.6400  
Toll Free: 855.668.8722  
Fax: 905.827.6402  
canada@novusbio.com

### **Novus Biologicals Europe**

19 Barton Lane  
Abingdon Science Park  
Abingdon, OX14 3NB, United Kingdom  
Phone: (44) (0) 1235 529449  
Free Phone: 0800 37 34 15  
Fax: (44) (0) 1235 533420  
info@bio-techne.com

### **General Contact Information**

www.novusbio.com  
Technical Support: technical@novusbio.com  
Orders: orders@novusbio.com  
General: novus@novusbio.com

### **Limitations**

This product is for research use only and is not approved for use in humans or in clinical diagnosis. Secondary Antibodies are guaranteed for 1 year from date of receipt.

For more information on our 100% guarantee, please visit [www.novusbio.com/guarantee](http://www.novusbio.com/guarantee)

Earn gift cards/discounts by submitting a review: [www.novusbio.com/reviews/submit/NB120-6871](http://www.novusbio.com/reviews/submit/NB120-6871)

Earn gift cards/discounts by submitting a publication using this product:  
[www.novusbio.com/publications](http://www.novusbio.com/publications)

